

**WAMBO COAL  
POLLUTION MONITORING DATA  
1 MARCH 2022 – 31 MARCH 2022**

**MARCH MONTHLY REPORT**

Published 28 April 2022

**Environment Protection Licence Number: 529  
Licensee: Wambo Coal Pty Limited, PMB 1, Singleton NSW 2330  
Premises: Wambo Coal Pty Limited, Jerrys Plains Road, Warkworth NSW 2330**

The following pollution monitoring data is published as a requirement of the Wambo Environmental Protection Licence (EPL) 529. A link to EPL529 can be found on the Environmental Protection Authority (EPA) Public Register. A link to the EPA's public register can be found at: <https://www.epa.nsw.gov.au/licensing-and-regulation/public-registers/about-prpoeo>

Monthly interim reports will be provided on a fortnightly basis until a final monthly report is produced when all monthly data is available.

The location of each sampling point is provided in 'Plan 2672-2' at the end of this document.

## Monitoring Data

### Surface and Mine Water Dam Monitoring

**Monitoring Frequency: Once per month**

**Sampling Method: Grab sample**

**Limits: Nil**

**Table 1 - WCPL Surface and Mine Water Dam Results**

EPL ID	Site ID	Date	pH	EC (µS/cm)	TSS (mg/L)	Comments
Point 24	SW01	25/03/2022	6.89	223	44	
Point 25	SW02	25/03/2022	6.88	170	60	
Point 26	SW03	25/03/2022	6.96	192	47	
Point 27	SW04	25/03/2022	7.08	210	9	
Point 28	SW05	25/03/2022	7.27	197	<b>37</b>	
Point 29	SW06	25/03/2022	6.83	139	18	
Point 30	SW07	25/03/2022	-	-	-	No Access
Point 31	SW08	25/03/2022	7.16	257	15	
Point 33	SW15	15/03/2022	8.62	1820	44	
Point 34	SW27a	25/03/2022	7.29	208	40	
Point 36	SW32a	25/03/2022	7.39	208	34	
Point 39	SW39	25/03/2022	-	-	-	No Flow
Point 40	SW40	25/03/2022	6.95	191	41	
Point 41	SW41	25/03/2022	-	-	-	No Flow

**Water Discharge Monitoring**

Monitoring Frequency:

Continuous during discharge (EC, pH, Turbidity)  
Daily during discharge (TSS, Volume)

Sampling Method:

In line instrumentation (EC, pH Turbidity)  
Grab sample (TSS)

Limits:

pH- 6.5 to 9.5  
TSS – 120  
Volume – 250ML/day

Date sampled: Continuous

Date obtained: Continuous

Table 2 - WCPL Discharge Monitoring

Site	Date	pH	Conductivity (µS/cm) Avg	TSS (mg/L)	Turbidity (NTU)	Volume (ML/day)	Comments	
Point 4	10/03/2022	8.85	1938	34	110	2.59		
	11/03/2022	8.56	1498	112	290	97.08		
	12/03/2022	8.50	1723	<b>177</b>	380	96.28		
	15/03/2022	8.59	1859	23	180	0.43		
	16/03/2022	8.58	2489	55	140	17.68		
	17/03/2022	8.66	2698	25	70	10.18		
	18/03/2022	8.59	2921	20	50	4.70		
	25/03/2022	8.57	3135	24	50	11.25		
	28/03/2022	8.69	2723	20	50	1.95		
	29/03/2022	8.66	2610	22	45	7.99		
	30/03/2022	8.73	2228	<b>235</b>	360	43.64		
	Point 19	No Discharges in March						

**Sewerage Treatment Monitoring**

Monitoring Frequency: Quarterly during discharge

Sampling Method: Grab sample

Limits: Nil

Date sampled: No sample in March

Date obtained:

Table 3- WCPL Discharge Monitoring

EPL ID	Site ID	Date	pH	Faecal Coliforms	Comments
Point 42	STPD2				
Point 52	STP2				
Point 55	STPD1	-	-	-	No discharge

**PM10 Monitoring**

Monitoring Frequency: Continuous

Sampling Method: AM22

Limits: Nil

Date sampled: Continuous

Date obtained: Continuous

Table 4 - WCPL PM10 Results

Date	PM02 - Wambo Road (Caban) (EPA14)		PM03 - Thelander (EPA15)		PM04 - Muller (EPA16)		PM05 - Kelly (EPA 53)	
	PM10 24 Hour Result (ug/m <sup>3</sup> )	Annual Average	PM10 24 Hour Result (ug/m <sup>3</sup> )	Annual Average	PM10 24 Hour Result (ug/m <sup>3</sup> )	Annual Average	PM10 24 Hour Result (ug/m <sup>3</sup> )	Annual Average
1/03/2022	5.5	12.10	6.6	8.38	9.2	13.22	7.0	15.17
2/03/2022	5.7	12.05	5.8	8.33	9.0	13.18	7.4	15.12
3/03/2022	4.7	12.00	5.3	8.28	8.3	13.14	3.8	15.10
4/03/2022	5.1	11.95	3.7	8.22	7.7	13.08	4.0	15.11
5/03/2022	10.3	11.93	8.6	8.20	16.3	13.07	13.2	15.14
6/03/2022	4.9	11.90	5.6	8.17	7.6	13.03	9.5	15.14
7/03/2022	5.4	11.85	6.6	8.13	8.8	12.98	8.1	15.15
8/03/2022	2.1	11.81	3.1	8.06	3.3	12.92	1.4	15.11
9/03/2022	5.2	11.77	3.8	8.02	6.6	12.88	6.6	15.08
10/03/2022	9.0	11.77	9.9	8.04	14.4	12.88	13.1	15.08
11/03/2022	10.4	11.74	15.1	8.05	21.5	12.88	14.7	15.07
12/03/2022	8.6	11.71	12.1	8.05	14.7	12.86	11.4	15.04
13/03/2022	9.9	11.70	10.9	8.07	17.1	12.87	10.3	15.02
14/03/2022	7.4	11.70	11.4	8.09	20.0	12.90	8.4	15.01
15/03/2022	8.4	11.69	10.5	8.09	14.9	12.90	11.9	15.01
16/03/2022	10.1	11.69	11.2	8.11	16.7	12.92	14.4	15.03
17/03/2022	12.5	11.71	11.3	8.13	18.3	12.93	13.3	15.03
18/03/2022	11.2	11.71	11.7	8.15	18.8	12.96	15.7	15.05
19/03/2022	8.2	11.72	9.4	8.16	15.1	12.98	15.3	15.07
20/03/2022	9.8	11.72	14.2	8.19	19.9	13.01	9.6	15.06
21/03/2022	9.6	11.73	6.3	8.20	19.0	13.04	15.1	15.09
22/03/2022	13.6	11.75	12.9	8.23	19.4	13.07	18.8	15.13
23/03/2022	20.0	11.79	17.3	8.26	26.8	13.13	13.4	15.15
24/03/2022	4.3	11.79	7.7	8.26	10.0	13.14	5.9	15.15
25/03/2022	8.8	11.78	10.0	8.28	5.4	13.13	14.3	15.17
26/03/2022	6.3	11.77	5.5	8.29	6.9	13.12	9.2	15.17
27/03/2022	6.7	11.76	6.7	8.29	NaN	13.13	6.9	15.16
28/03/2022	7.5	11.76	7.2	8.29	NaN	13.14	7.6	15.15
29/03/2022	5.6	11.74	7.1	8.30	7.5	13.13	9.4	15.14
30/03/2022	8.6	11.72	12.5	8.31	11.5	13.12	9.7	15.12
31/03/2022	7.7	11.71	8.2	8.31	10.3	13.10	9.7	15.11

\*NaN >75% of data collected during period

**Meteorological Monitoring**

Monitoring Frequency: Continuous

Sampling Method: Site Meteorological Station EPA17

Limits: Nil

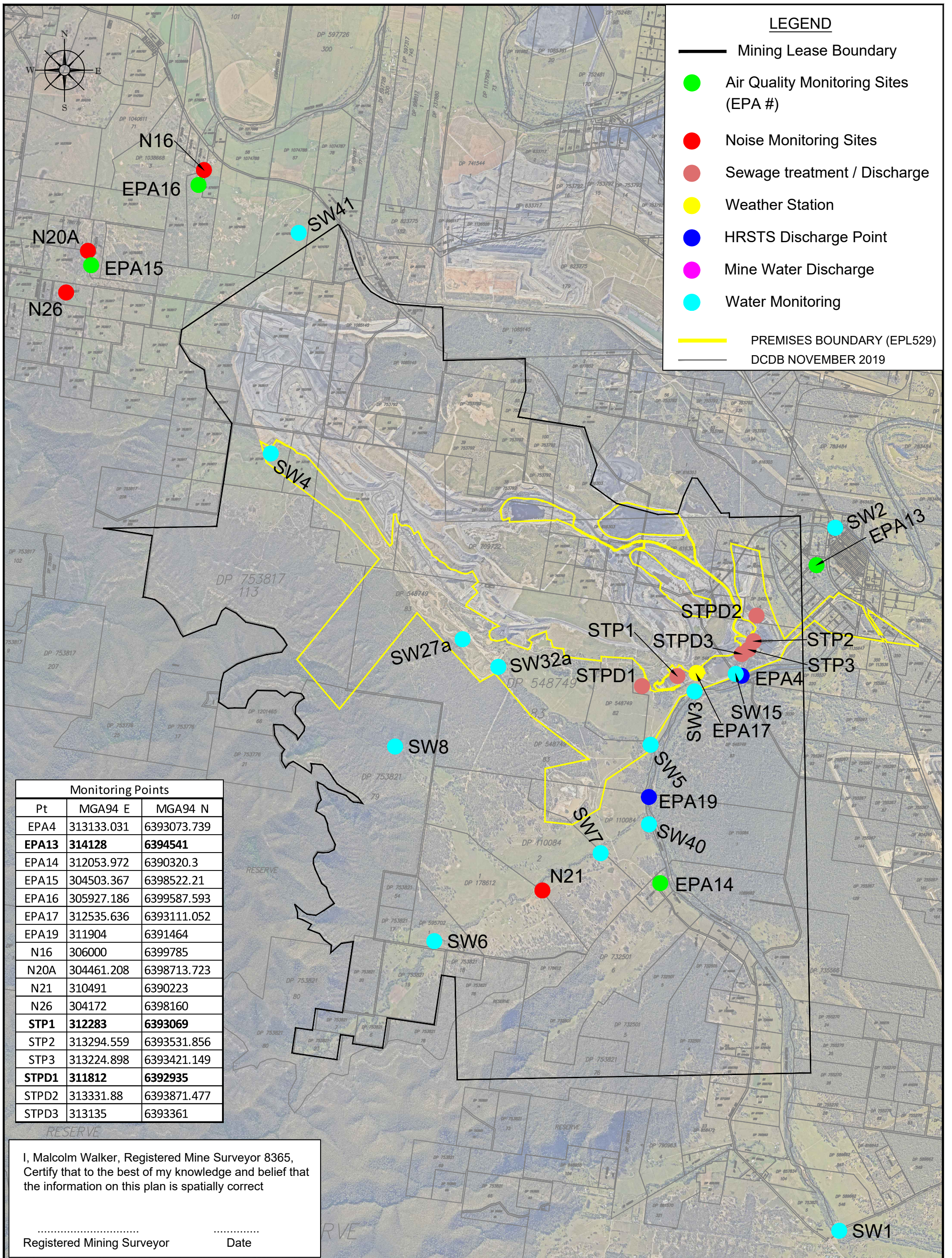
Date sampled: continuous

Date obtained: continuous

Table 5 - WCPL Meteorology

Date	Temperature (2m)			Temperature (10m)			Humidity			Solar Radiation		RAIN	Wind Speed			Wind Direction at 10m	Sigma Theta		
	Average	Min	Max	Average	Min	Max	Average	Min	Max	Average	Max	Sum (mm)	Average	Min	Max	Average	Average	Max	Min
1/03/2022	22.0	19.8	25.3	21.8	19.8	24.8	90.5	70.3	100.0	215.2	1117.5	5.8	2.7	0.5	5.3	132.9	19.1	26.6	10.4
2/03/2022	21.8	19.6	26.7	21.7	19.6	26.1	90.6	66.4	100.0	160.5	1264.5	3.2	1.7	0.2	4.1	139.6	20.0	85.7	8.9
3/03/2022	21.8	19.7	25.2	21.7	19.9	24.9	94.1	76.2	100.0	132.1	1054.6	22.0	2.1	0.1	4.9	161.0	17.2	44.9	5.5
4/03/2022	23.9	21.4	27.8	23.8	21.5	27.2	88.7	69.2	100.0	176.1	982.9	6.6	2.3	0.6	5.7	152.5	18.3	35.4	7.0
5/03/2022	23.9	19.6	29.1	24.0	19.7	28.8	83.2	56.1	100.0	221.4	929.6	0.2	0.9	0.0	2.6	162.0	31.8	99.1	7.0
6/03/2022	22.7	19.2	26.7	22.7	19.2	26.6	87.0	67.0	100.0	150.1	861.6	40.0	2.0	0.3	5.2	162.4	22.9	69.6	9.6
7/03/2022	22.1	19.8	26.9	22.1	19.8	26.5	97.6	73.3	100.0	86.9	823.4	92.8	1.7	0.0	4.2	145.1	18.8	60.7	7.3
8/03/2022	20.8	19.3	21.8	20.8	19.2	22.0	94.6	71.3	100.0	40.7	321.1	75.4	2.0	0.2	5.5	213.9	24.6	88.9	8.9
9/03/2022	21.3	18.2	25.8	21.4	18.2	25.4	80.2	54.1	100.0	162.8	861.8	12.2	1.6	0.1	4.7	199.5	34.0	98.3	14.2
10/03/2022	19.8	16.9	23.3	19.7	17.3	22.7	63.7	49.1	87.7	229.4	983.3	0.0	1.7	0.2	4.5	133.4	23.8	58.7	10.2
11/03/2022	19.8	14.5	25.2	19.9	15.2	24.6	72.5	50.2	98.6	243.6	1168.3	0.0	1.7	0.1	4.5	128.7	24.5	82.6	9.0
12/03/2022	19.5	13.7	25.4	19.7	14.3	24.8	75.1	49.0	100.0	252.5	1152.3	0.0	1.9	0.2	5.3	151.2	22.0	67.7	10.0
13/03/2022	19.3	13.6	25.0	19.4	14.0	24.6	78.6	51.7	100.0	205.6	1019.5	0.0	1.4	0.0	4.0	134.5	26.4	92.5	9.5
14/03/2022	20.2	14.4	26.3	20.3	14.9	25.5	78.1	52.8	100.0	244.2	1038.9	0.2	1.7	0.0	4.9	139.1	24.4	82.3	8.7
15/03/2022	20.5	17.1	25.8	20.5	17.3	25.3	78.6	49.7	100.0	191.1	906.5	2.8	1.9	0.2	4.7	133.0	19.9	59.2	9.3
16/03/2022	21.7	16.5	27.4	21.6	16.9	27.0	77.4	49.1	100.0	274.3	1141.9	0.0	1.8	0.2	5.1	125.4	21.4	74.8	8.9
17/03/2022	22.4	16.3	28.8	22.5	16.9	28.6	79.5	49.0	100.0	244.7	1063.0	0.2	1.1	0.1	3.7	137.7	28.1	90.9	7.6
18/03/2022	22.4	17.8	28.6	22.5	18.2	27.9	78.9	50.6	100.0	211.4	1126.5	0.0	1.6	0.1	4.3	136.5	21.5	70.0	7.8
19/03/2022	20.0	18.0	23.0	20.1	18.2	22.7	86.9	69.3	100.0	106.3	677.3	1.0	1.3	0.0	4.3	166.4	23.8	87.3	6.7
20/03/2022	20.1	12.8	27.6	20.3	13.5	27.3	74.1	41.9	100.0	311.0	1109.8	0.2	0.9	0.0	3.0	165.5	36.2	97.8	9.4
21/03/2022	19.7	14.8	26.7	19.7	15.3	25.9	78.1	45.7	100.0	249.9	1081.6	0.2	1.3	0.0	4.0	144.3	29.0	93.2	7.7
22/03/2022	21.2	12.4	31.1	21.2	12.7	30.7	75.7	39.4	100.0	295.1	979.0	0.0	1.1	0.1	3.2	226.6	24.3	85.0	6.7
23/03/2022	22.3	16.0	33.0	22.2	16.3	31.3	79.8	36.2	100.0	220.8	987.4	9.4	2.0	0.1	7.1	176.5	25.9	85.7	8.7
24/03/2022	18.8	16.8	20.4	18.7	16.8	20.4	95.5	83.5	100.0	61.9	613.1	53.8	2.0	0.7	5.6	143.7	18.7	56.2	9.5
25/03/2022	19.4	15.9	23.3	19.5	16.1	22.9	86.9	67.6	100.0	96.2	685.6	0.6	1.5	0.1	4.2	138.8	21.6	88.6	7.1
26/03/2022	19.0	16.9	22.8	18.9	16.6	22.3	90.1	59.0	100.0	123.9	707.2	28.6	1.9	0.7	4.8	129.3	17.0	38.3	6.8
27/03/2022	19.1	17.1	21.9	19.1	17.3	21.8	95.9	81.0	100.0	74.8	393.1	3.2	1.3	0.3	3.0	145.6	17.2	47.5	6.8
28/03/2022	21.0	18.2	24.8	20.9	18.3	24.4	91.1	70.8	100.0	130.9	854.8	0.8	0.8	0.0	1.7	147.5	24.8	79.9	7.8
29/03/2022	20.2	19.1	21.9	20.1	19.1	21.7	99.5	92.3	100.0	61.8	305.7	19.0	1.2	0.1	3.1	152.8	17.5	66.8	6.4
30/03/2022	21.0	18.6	24.4	21.2	19.2	24.1	85.8	68.6	100.0	147.4	1023.7	3.0	2.3	1.1	4.2	150.0	16.8	28.3	6.9
31/03/2022	19.5	16.7	22.8	19.5	16.9	22.4	73.8	59.7	95.7	137.6	770.1	2.0	3.9	2.0	7.4	170.6	18.0	26.7	11.6
	<b>20.9</b>	<b>12.4</b>	<b>33.0</b>	<b>20.9</b>	<b>12.7</b>	<b>31.3</b>	<b>83.9</b>	<b>36.2</b>	<b>100.0</b>	<b>175.8</b>	<b>1264.5</b>	<b>383.2</b>	<b>1.7</b>	<b>0.0</b>	<b>7.4</b>	<b>153.3</b>	<b>22.9</b>	<b>99.1</b>	<b>5.5</b>





**LEGEND**

- Mining Lease Boundary
- Air Quality Monitoring Sites (EPA #)
- Noise Monitoring Sites
- Sewage treatment / Discharge
- Weather Station
- HRSTS Discharge Point
- Mine Water Discharge
- Water Monitoring
- PREMISES BOUNDARY (EPL529)
- DCDB NOVEMBER 2019

Monitoring Points		
Pt	MGA94 E	MGA94 N
EPA4	313133.031	6393073.739
<b>EPA13</b>	<b>314128</b>	<b>6394541</b>
EPA14	312053.972	6390320.3
EPA15	304503.367	6398522.21
EPA16	305927.186	6399587.593
EPA17	312535.636	6393111.052
EPA19	311904	6391464
N16	306000	6399785
N20A	304461.208	6398713.723
N21	310491	6390223
N26	304172	6398160
<b>STP1</b>	<b>312283</b>	<b>6393069</b>
STP2	313294.559	6393531.856
STP3	313224.898	6393421.149
<b>STPD1</b>	<b>311812</b>	<b>6392935</b>
STPD2	313331.88	6393871.477
STPD3	313135	6393361

I, Malcolm Walker, Registered Mine Surveyor 8365,  
 Certify that to the best of my knowledge and belief that  
 the information on this plan is spatially correct

.....  
 Registered Mining Surveyor                          Date

Rev.	Drawn	Description	Approved
D	MJW	Water monitoring and discharge sites added	
E	MJW	Monitoring points except water monitoring added to coordinate table	
G	MJW	STPD3 Location amended	
H	MJW	EPA 13, STP 1, STPD1 & EPA 11 Locations amended	JB
I	RE	Opencut related monitors removed	JB

**WAMBO COAL PTY LIMITED**  
 ABN 13 000 668 057  
 Jerry's Plains Rd, Warkworth Phone: 02 65 702200  
 Via Singleton, NSW, 2330 Fax: 02 65 702290  
 Prepared by NWU Survey Ph: 02 65 702318

**Wambo mine**  
**Environment Protection Licence 529**  
**Plan of Premises- Monitoring Sites**

Date: \_\_\_\_\_ Scale: 1:45,000 Drawn: MJW Checked: JB Approved: PJ

Drawing No. <b>2672-2</b>
Revision No. J_26/11/2020
Sheet Size A3