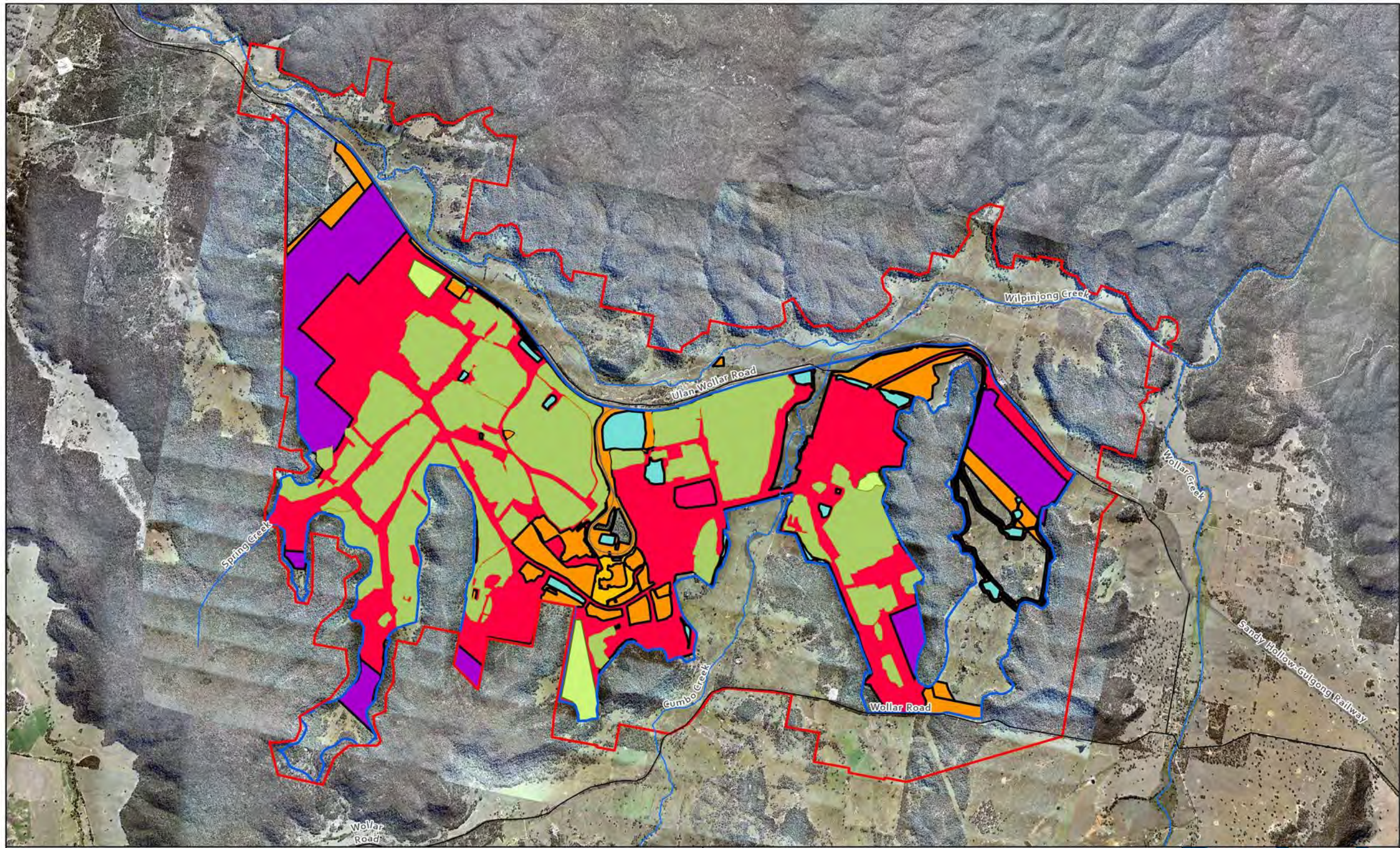


**APPENDIX 7**  
**PLANS**

# Plans



**Legend**

Project Approval Boundary SSD6764	Decommissioning	Beneficiation Facility
Development Disturbance Limit	Landform Establishment	Infrastructure Area
Rail	Growth Media Development	Other
Roads	Ecosystem and Land Use Establishment	Overburden Emplacement Area
Creeklines	Ecosystem and Land Use Development	Tailings Storage Facility
	Relinquishment (Rehabilitated)	Active Mining Area (Open cut void)
	Rehabilitation Completion	Water Management Area

N

0 0.330.65 1.3 1.95 2.6  
Kilometers

<b>Wilpinjong Coal Mine LOM Rehabilitation Schedule 2022</b>			
Spatial Reference Name: GDA 1994 MGA Zone 55	Review ID: 1	Date Exported: 27/06/2022 12:41 PM	Drawn: JF
		Drawing No. RMP: LOM Plan 1 (2022)	

**Peabody**

Peabody makes every effort to ensure the quality of the information available on this map. Before relying on the information on this map, users should carefully evaluate its accuracy, currency, completeness and relevance for their purposes, and should obtain any appropriate professional advice relevant to their circumstances. Peabody cannot guarantee and assumes no responsibility for the accuracy, currency or completeness of the information and by using this map you accept that Peabody has no liability for any loss or damage in any form whatsoever caused directly or indirectly from the use of this map.



**Legend**

- 2022 RMP Ecosystem & Land Use Establishment Areas - 34.9Ha
- 2022 Claimed Ecosystem & Land Use Establishment Areas - 47.1Ha
- SSD 6764 Disturbance Boundary
- SSD 6764 Approval Boundary



**Wilpinjong Coal  
2022 Rehabilitation Domains**



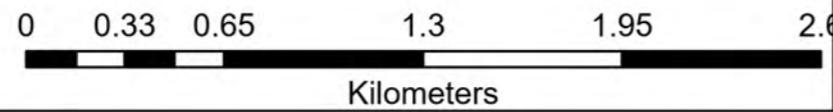
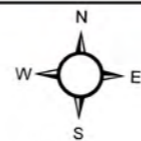
SpatialReference Name:GDA1994MGAZone55	Review ID: 1	DateExported: 24/02/2023 11:04AM	Drawn By: JH	Drawing No. 02WRSCXTI
---	-----------------	--	-----------------	--------------------------

Peabody makes every effort to ensure the quality of the information available on this map. Before relying on the information on this map, users should carefully evaluate its accuracy, currency, completeness and relevance for their purposes, and should obtain any appropriate professional advice relevant to their circumstances.  
Peabody cannot guarantee and assumes no responsibility for the accuracy, currency or completeness of the information and by using this map you accept that Peabody has no liability for any loss or damage in any form whatsoever caused directly or indirectly from the use of this map.




**Legend**

 SSD 6764 Approval Boundary	 2011	 2018
<b>Year Completed</b>	 2012	 2019
 2008	 2014	 2020
 2009	 2015	 2021
 2010	 2016	 2022
	 2017	



**Wilpinjong Coal Rehabilitation to Date**

SpatialReference Name:GDA1994MGAZone55	Review ID: 1	DateExported: 23/02/2023 9:12AM	Drawn By: JH	Drawing No. SD-40-2_P	 <p>Peabody makes every effort to ensure the quality of the information available on this map. Before relying on the information on this map, users should carefully evaluate its accuracy, currency, completeness and relevance for their purposes, and should obtain any appropriate professional advice relevant to their circumstances.</p> <p>Peabody cannot guarantee and assumes no responsibility for the accuracy, currency or completeness of the information and by using this map you accept that Peabody has no liability for any loss or damage in any form whatsoever caused directly or indirectly from the use of this map.</p>
---	-----------------	---------------------------------------	-----------------	--------------------------	---



**Legend**

2022 Re-Work Areas - 101ha

BVT

- HU732
- HU824



**Wilpinjong Coal  
2022 Rehabilitation Re-Work Areas**



SpatialReference Name:GDA1994MGAZone65	Review ID: 1	DateExported: 23/02/2023 9:12AM	Drawn By: JH	Drawing No. SD_YF2J
---	-----------------	---------------------------------------	-----------------	------------------------

Peabody makes every effort to ensure the quality of the information available on this map. Before relying on the information on this map, users should carefully evaluate its accuracy, currency, completeness and relevance for their purposes, and should obtain any appropriate professional advice relevant to their circumstances.  
Peabody cannot guarantee and assumes no responsibility for the accuracy, currency or completeness of the information and by using this map you accept that Peabody has no liability for any loss or damage in any form whatsoever caused directly or indirectly from the use of this map.