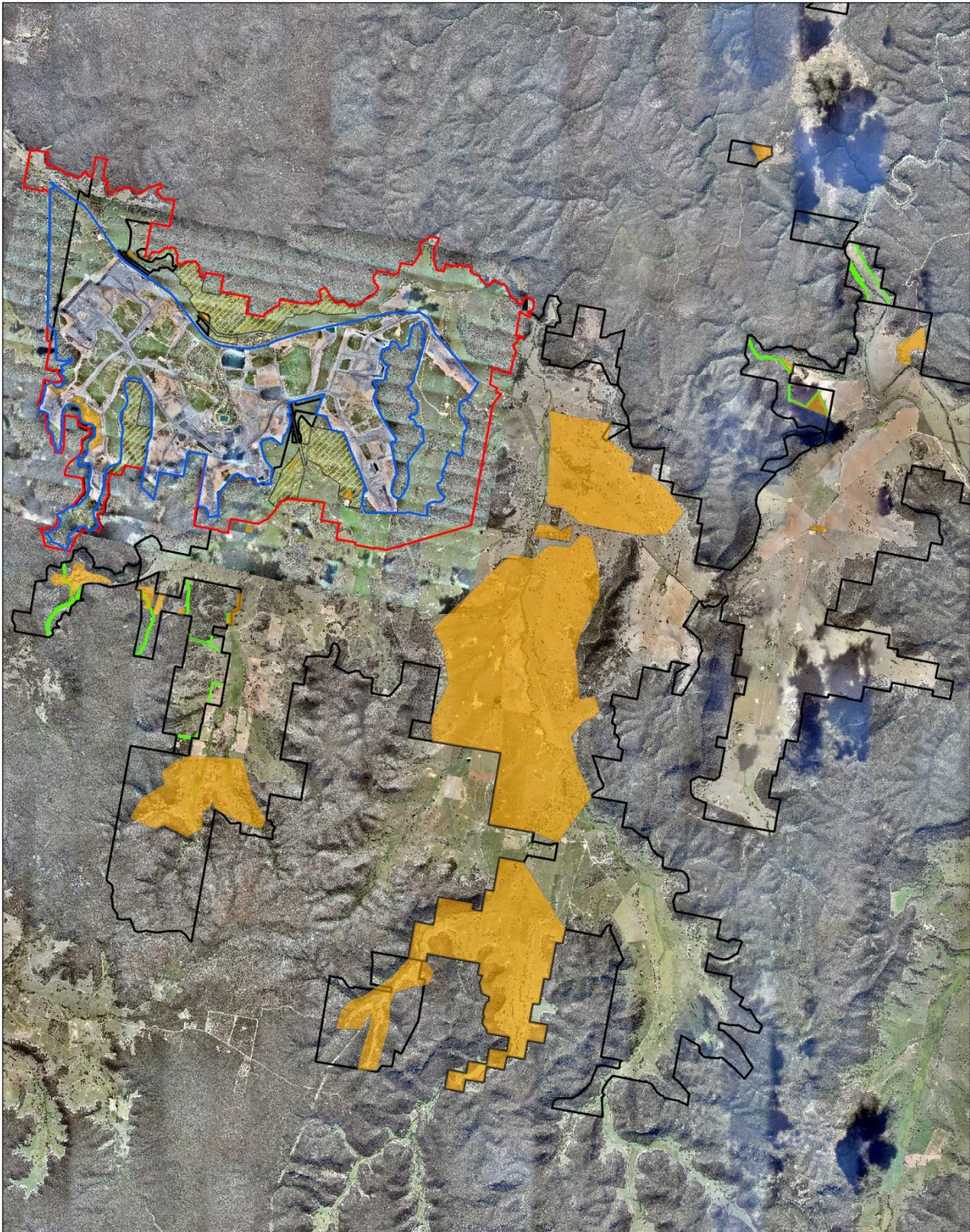
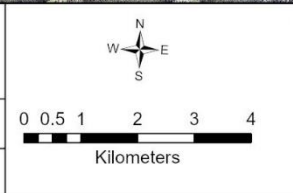


APPENDIX 7
LAND MANAGEMENT

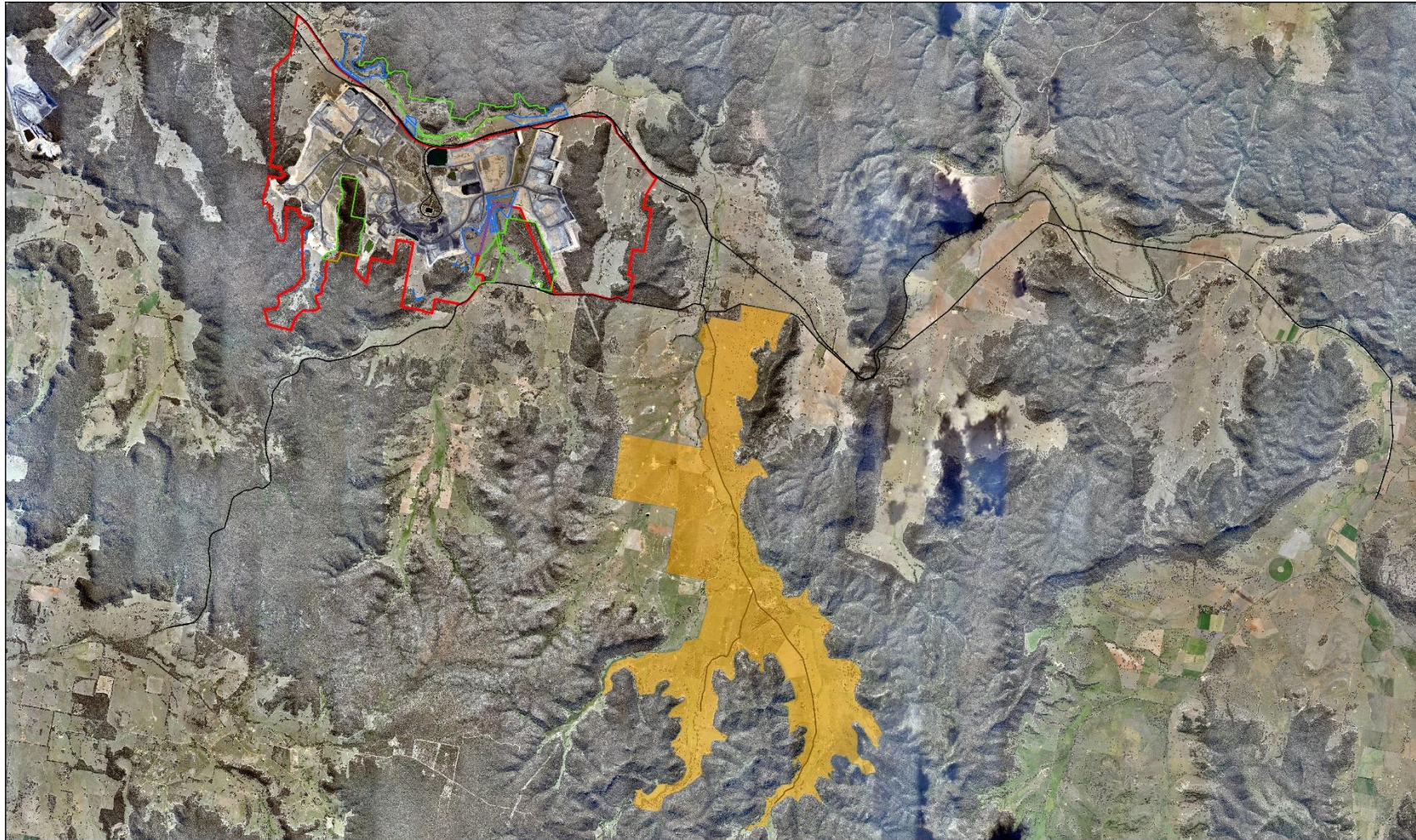


<p>Wilpinjong Coal 2020 Weed Control</p>	
<p>Spatial Reference Name: GDA 1994 MGA Zone 55</p>	<p>Date Exported: 8/03/2021 11:21 AM Drawer: JF</p>

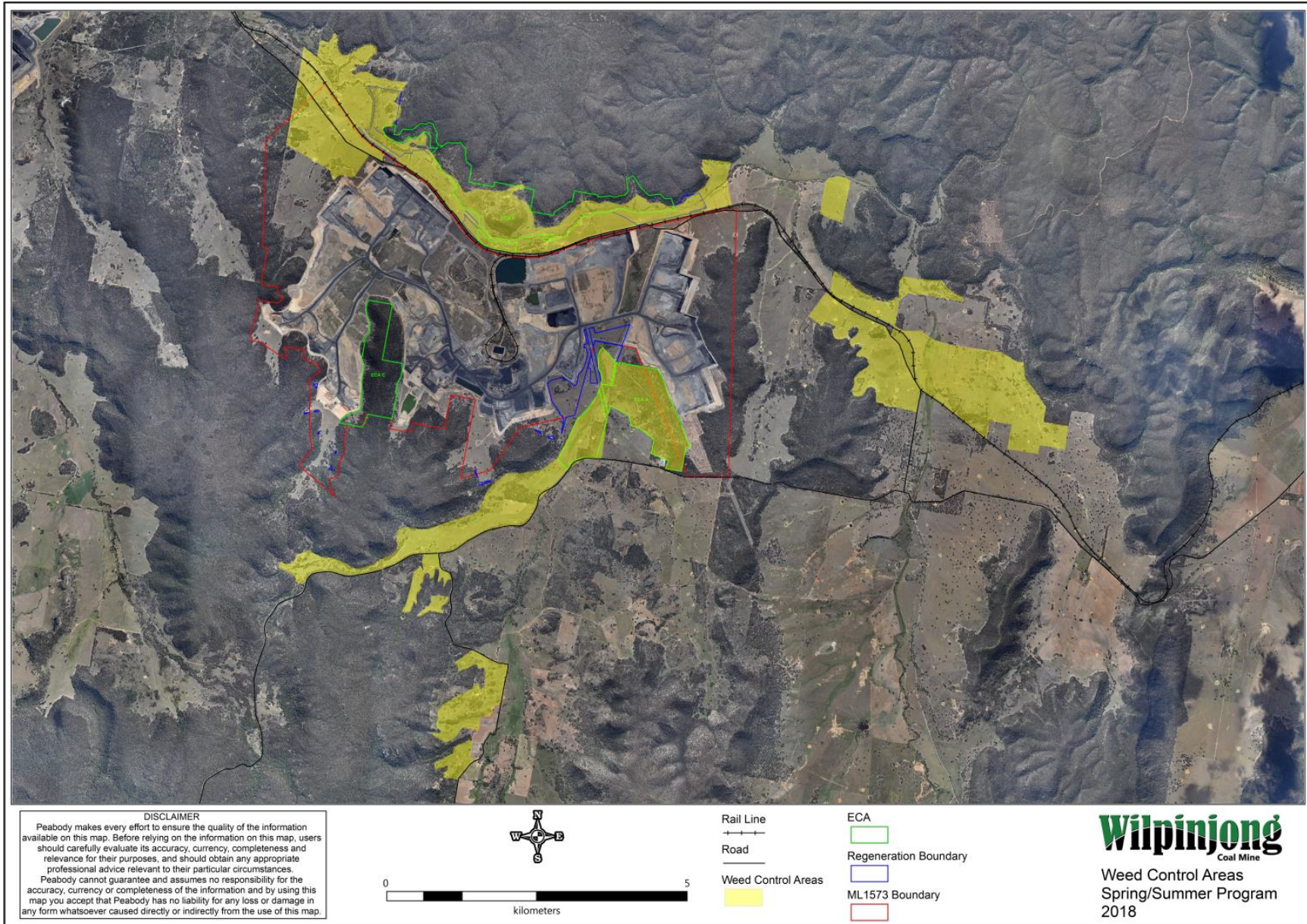


- Legend**
- 2020 Weed Control
 - SSD6764 Development Disturbance Limit
 - SSD 6764 Development Consent Boundary
 - Regeneration Area
 - Enhancement & Conservation Areas (ECAs)
 - Biodiversity Offset Areas (BOAs)
- Approvals/Boundary**
- WCLP_Landholdings

Peabody makes every effort to ensure the quality of the information available on this map. Before relying on the information on this map, users should carefully evaluate its accuracy, currency, completeness and relevance for their purposes, and should obtain any appropriate professional advice relevant to their circumstances. Peabody cannot guarantee and assumes no responsibility for the accuracy, currency or completeness of the information used by using this map you accept that Peabody has no liability for any loss or damage in any form whatsoever caused directly or indirectly from the use of this map.



	<p>Legend</p> <p>Weed Control</p> <ul style="list-style-type: none"> 2019 Regeneration Areas Boundary ECA's <p>— Road</p> <p>+ Sandy Hollow Rail Line</p> <p>— Colliery Holding Boundary</p>	<p>Wilpinjong Coal 2019 Weed Control Program</p>				
<p>Spatial Reference Name: GDA 1994 MGA Zone 55</p>		<p>Review ID: 1</p>	<p>Date Exported: 11/02/2020 10:55 AM</p>	<p>Drawn: JF</p>	<p>Drawing No. WILP - AR19 Weed Control</p>	<p><small>Peabody makes every effort to ensure the quality of the information available on this map. Before relying on the information on this map, users should carefully evaluate its accuracy, currency, completeness and relevance for their purposes, and should consult any appropriate professional advice relevant to their circumstances. Peabody cannot guarantee and assumes no responsibility for the accuracy, currency or completeness of the information and by using this map you accept that Peabody has no liability for any loss or damage in any form whatsoever caused directly or indirectly from the use of this map.</small></p>



2020/21 Rehabilitation Photographic Register

Please refer to **Figure A** for locations of photographs and **Table A** for the 2020/21 Rehabilitation Photographic Register.

Figure A – Rehabilitation Photograph Locations

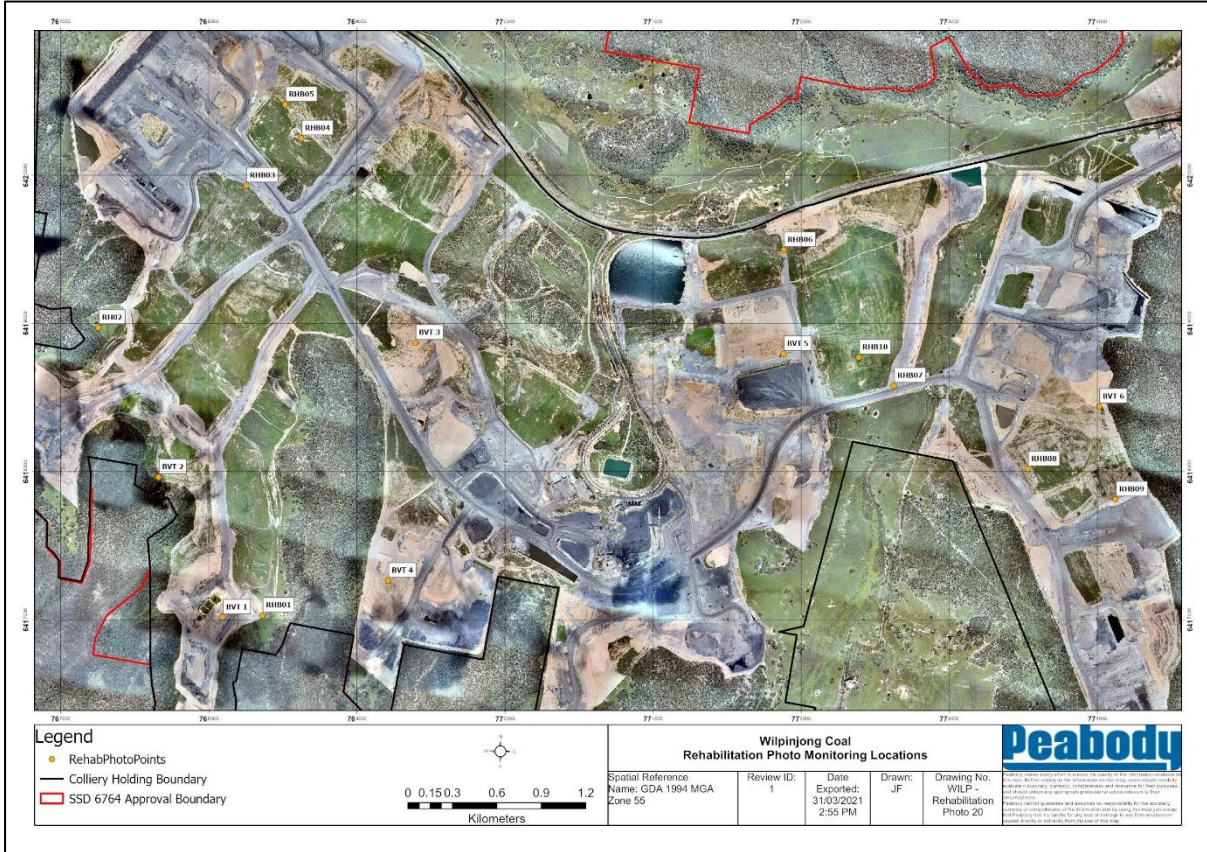


Table A – Rehabilitation Photographic Register

Rehabilitation – Photo Locations

RHB01 (2017)



RHB01 (2019)



Rehabilitation – Photo Locations

RHB01 (2020)

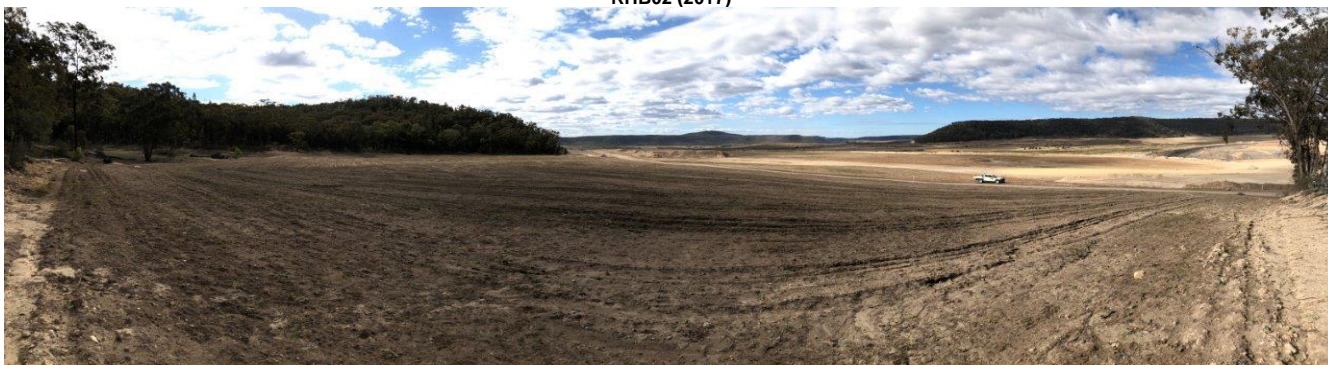


RHB01 (2021)



Rehabilitation – Photo Locations

RHB02 (2017)



RHB02 (2019)



RHB02 (2020)



RHB02 (2021)



Rehabilitation – Photo Locations

RHB03 (2017)



RHB03 (2019)



RHB03 (2020)

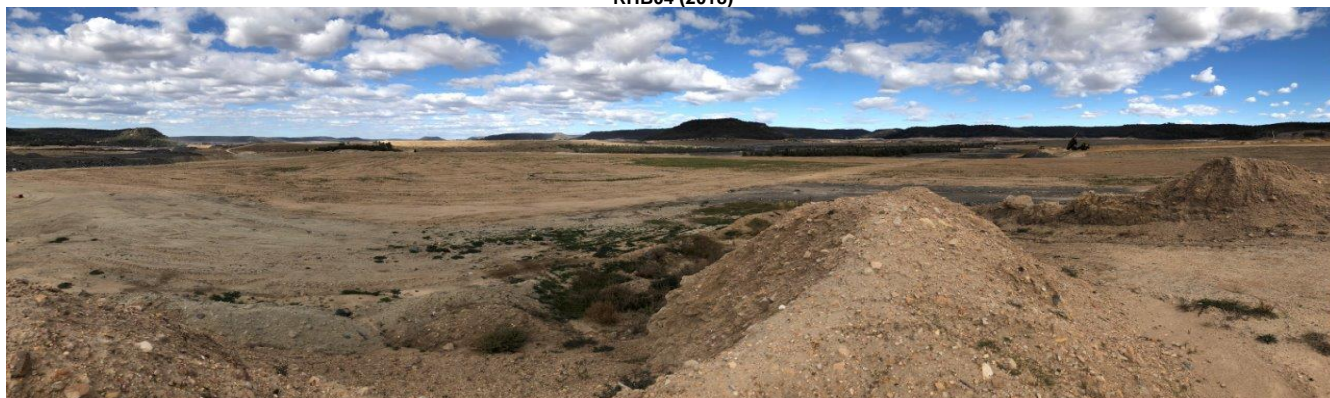


RHB03 (2021)



Rehabilitation – Photo Locations

RHB04 (2018)



RHB04 (2019)



RHB04 (2020)



RHB04 (2021)



Rehabilitation – Photo Locations

RHB05 (2017)



RHB05 (2018)



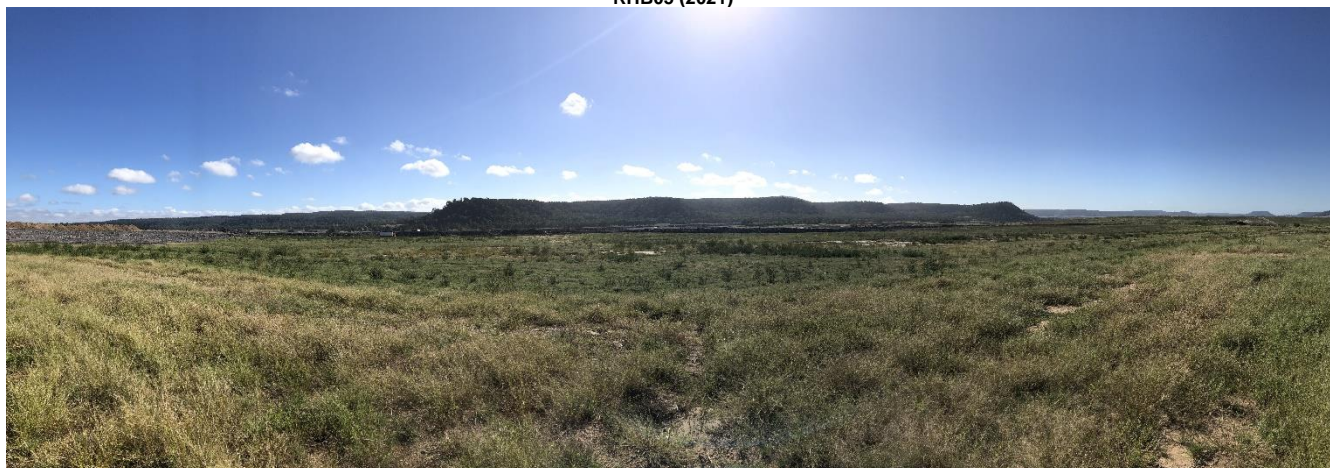
RHB05 (2019)



RHB05 (2020)

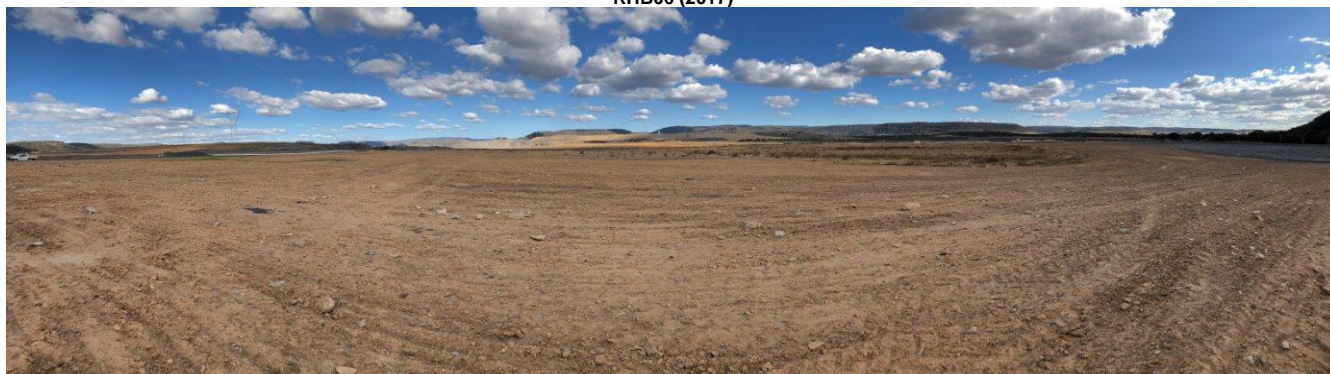


RHB05 (2021)



Rehabilitation – Photo Locations

RHB06 (2017)



RHB06 (2019)



RHB06 (2020)



RHB06 (2021)



Rehabilitation – Photo Locations

RHB07 (2017)



RHB07 (2019)



RHB07 (2020)



RHB07 (2021)



Rehabilitation – Photo Locations

RHB08 (2017)



RHB08 (2019)



RHB08 (2020)

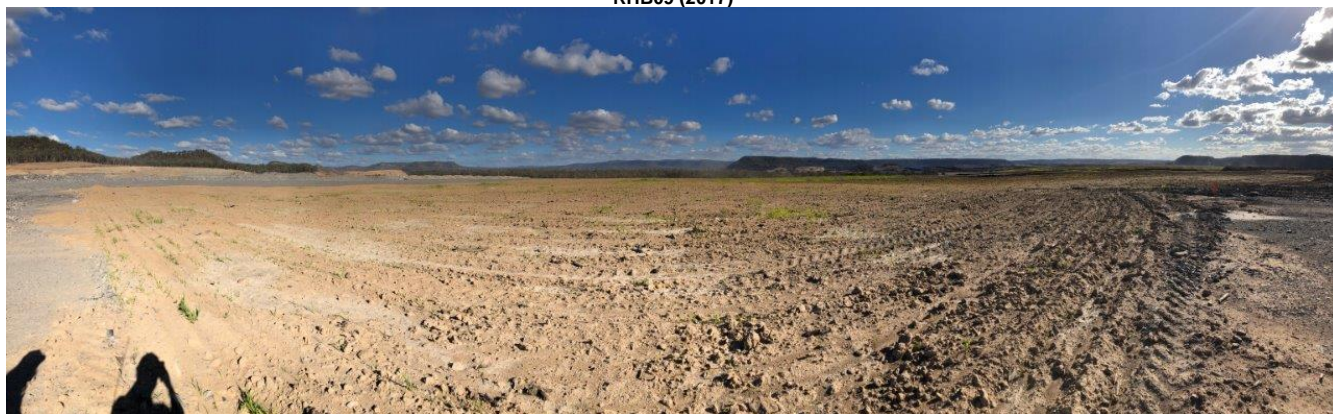


RHB08 (2021)



Rehabilitation – Photo Locations

RHB09 (2017)



RHB09 (2019)



RHB09 (2020)



RHB09 (2021)



Rehabilitation – Photo Locations

RHB10 (2017)



RHB10 (2019)



RHB10 (2020)



RHB10 (2021)



Rehabilitation – Photo Locations

BVT 1 (2021)



BVT 2 (2021)



BVT 3 (2021)



Rehabilitation – Photo Locations

BVT 4 (2021)



BVT 5 (2021)



BVT 6 (2021)

