



ANNUAL COMMUNITY CONSULTATION REPORT

for

EXPLORATION LICENCE NO. 6169 (*Mining Act, 1992*)

Project Name	Wilpinjong Coal Mine
Location	1434 Ulan – Wollar Road, Wilpinjong NSW 2850
Operator	Wilpinjong Coal Propriety Limited
EL Grant Date	22 December 2003
EL Expiry Date	22 December 2027
Reporting Period	22 December 2022 - 21 December 2023

Compiled by: Kieren Bennetts

Environment & Community Manager - Wilpinjong Coal Mine

Mobile: +61(0)488 103 807

Email: kbennetts@peabodyenergy.com

15 February 2024

LIST OF CONTENTS

1.0	INTRODUCTION	4
2.0	CONSULTATION UNDERTAKEN	7
2.1	Agency Consultation.....	7
2.1.1	NSW Resources Regulator	7
2.2	Community Consultation Committee (CCC).....	9
2.3	Mid-Western Regional Council	12
2.4	Registered Aboriginal Parties Consultative Committee.....	13
2.5	Cultural Heritage Liaison Sub-Committee	13
2.6	Landholder Communication	14
2.7	'Have a Chat' - informal meetings.....	14
3.0	OUTCOMES OF CONSULTATION	15
3.1	Proposed Future Consultation	16
4.0	ENQUIRIES & COMPLAINTS	17

LIST OF TABLES

Table 1:	Exploration Information provided to WCPL CCC.....	10
Table 2 -	Exploration specific consultation	14

LIST OF FIGURES

Figure 1:	EL 6169 boundaries and land ownership	6
Figure 2:	WCPL EL 9399 proposed exploration activities.....	8

EXECUTIVE SUMMARY

The Wilpinjong Coal Mine (the Mine) is owned by Wilpinjong Coal Pty Limited (WCPL), a wholly owned subsidiary of Peabody Energy Australia Pty Ltd (Peabody). The Mine is located approximately 40 kilometres north-east of Mudgee, near the Village of Wollar, within the Mid-Western Regional Local Government Area, in central New South Wales.

EL 6169, initially granted to Wilpinjong Coal Pty Ltd in December 2003. Renewal applications were submitted in 2012 and 2017, extending the lease term. The department initiated a review in June 2019, leading to partial cancellation in April 2023. In July 2023, updated documents were submitted as part of the Ageing Dealings Project, followed by a renewal approval in September 2023, extending EL 6169 until December 2027.

As per the Community Consultation Condition of the licence, an annual report detailing consultation undertaken during the reporting period is made publicly available within 2 calendar months of the anniversary of the grant of the prospecting title by publishing it online on the titleholder's online platform or providing a copy on request within 14 days after the request is made.

This report provides a summary of the community consultation undertaken as per the *Exploration Code of Practice: Community Consultation (March 2016)*, for the reporting period 22 December 2022 - 21 December 2023. Key consultation undertaken during the reporting period includes:

- Face to face meeting with the Senior Inspector Environment & Inspector Environment NSW Resources Regulator, Wilpinjong NSW, 4 August 2023.
- Wilpinjong Coal Mine Community Consultative Committee (CCC) meeting updates relating to the current and future drilling program.
- Aboriginal consultation via the Registered Aboriginal Parties Consultation Committee (RAPCC) and Cultural Heritage Liaison Sub-Committee (CHLSC).
- Monthly informal 'Have a Chat' community consultation (face to face 'drop-in' sessions).

During the reporting period, key stakeholders and the broader community were informed about current and future exploration activities, including:

- Exploration Applications
- Approval status
- Planned drilling program
- Location of drill rigs
- Timing of works,
- Rehabilitation works.

No issues of concern or complaints relating to exploration and/or drilling activities were received by the Wilpinjong Coal Environment and Community department during the reporting period.

1.0 INTRODUCTION

The Wilpinjong Coal Mine (the Mine) is owned by Wilpinjong Coal Pty Limited (WCPL), a wholly owned subsidiary of Peabody Energy Australia Pty Ltd (Peabody). The Mine is an existing open cut coal mine situated approximately 40 kilometres north-east of Mudgee, near the Village of Wollar, within the Mid-Western Regional Local Government Area, in central New South Wales. The mine produces thermal coal products which are transported by rail to domestic customers for use in electricity generation and to the Port of Newcastle for export. Open cut mining operations and associated mobile equipment movements are undertaken 24 hours per day, seven days a week.

EL 6169 was granted to Wilpinjong Coal Pty Ltd (a wholly owned subsidiary of Excel Coal Limited) under the Mining Act, 1992 in December 2003 by the Minister for Mineral Resources. Wilpinjong Coal Pty Ltd was later purchased by Peabody Energy in Quarter 4, 2006. Project Approval (05-0021) was granted by the Minister for Planning under Part 3A of the Environmental Planning and Assessment Act (1979) on 1 February 2006, following submission of the Wilpinjong Coal Project Environmental Impact Statement in May 2005. Since the original approval was granted, this Project Approval has been modified six times.

The Minister for Mineral Resources granted Mining Lease (ML) 1573 on 8 February 2006 over a large part of EL 6169. The remaining areas covered by EL 6169 include that part of the EL north of the Ulan–Wollar Road, a large area in the southeast and three (3) small areas in the southwest.

In November 2012, an application for renewal of EL 6169 was lodged with the Department of Trade and Investment, Regional Infrastructure and Services. On 14 October 2013 EL 6169 was renewed for a further term until 28 November 2017. A renewal application for a further five (5) year term was lodged on 13 November 2017.

On 8 January 2016, Wilpinjong Coal submitted an Environmental Impact Statement (EIS) for the Wilpinjong Extension Project (WEP) to the NSW DPE. The EIS was prepared to accompany a Development Application made for the WEP as a State Significant Development (SSD), in accordance with Part 4 of the *NSW Environmental Planning and Assessment Act, 1979*. On 24 April 2017, the NSW Planning Assessment Commission, granted approval, subject to the conditions of consent to SSD-6764. PA (05-0021) has been surrendered. WCPL is operating in accordance with SSD-6764.

Mining Lease Application MLA 510 and MLA 515 were granted on the 20 December 2018 and 27 September 2019 respectively. MLA 510 and MLA 515 converted to ML 1779 and ML 1795. A portion of EL 6169 was converted to ML 1779 and ML 1795 part C, an area north of the Ulan–Wollar Road, a large area in the southeast and three (3) small areas in the southwest.

The department released a Notice of proposed decision to review EL 6169, accompanied by a draft Instrument of Renewal, on June 26, 2019.

Mining Lease Application MLA 616 was granted on the 28 February 2023. MLA 616 was converted to Mining Lease ML 1846. A portion of EL 6169, an area north of the Ulan–Wollar Road, was converted into ML 1846. The department released an Instrument of Part Cancellation on the 26 April 2023 due to

the above ML conversion. Partial relinquishment report (REP-2023823) was lodged for EL 6169 on 22 May 2023 and notice of assessment completion was received 4 July 2023.

In July 2023, an updated Renewal Justification Statement and updated Proposed Work Program was submitted as part of the Ageing Dealings Project. The department released a Notice of Proposed Decision for EL 6169 to review submitted documents for EL 6169, accompanied by a draft Instrument of Renewal, on August 25, 2023. The renewal of EL 6169 has been approved on the 6 September 2023 until the 22 December 2027.

As per Condition 3 of EL 6169 - *'The licence holder must carry out community consultation in relation to the planning and conduct of activities under this licence in accordance with the Exploration Code of Practice: Community Consultation (March 2016)'. As per the Code of Practice, an annual report on Community Consultation must be made publicly available within 2 calendar months of the anniversary of the grant of the prospecting title by publishing it online on the titleholder's online platform or providing a copy on request within 14 days after the request is made'*. Therefore, this report details the relevant community consultation undertaken from 22 December 2022 to 21 December 2023.

Figure 1 illustrates the areas subject to the relevant mining leases, together with land ownership details. More detailed information regarding land ownership in the Village of Wollar is available upon request. Since its acquisition of the Wilpinjong Coal Mine in 2006, Peabody has also acquired a range of adjacent rural properties and lands to the east and south-east of the mine. As shown, the major landowner of the areas subject to this EL is Peabody.

WILPINJONG COAL MINE COMMUNITY CONSULTATION REPORT
 EL 6169: 22 December 2022 – 21 December 2023

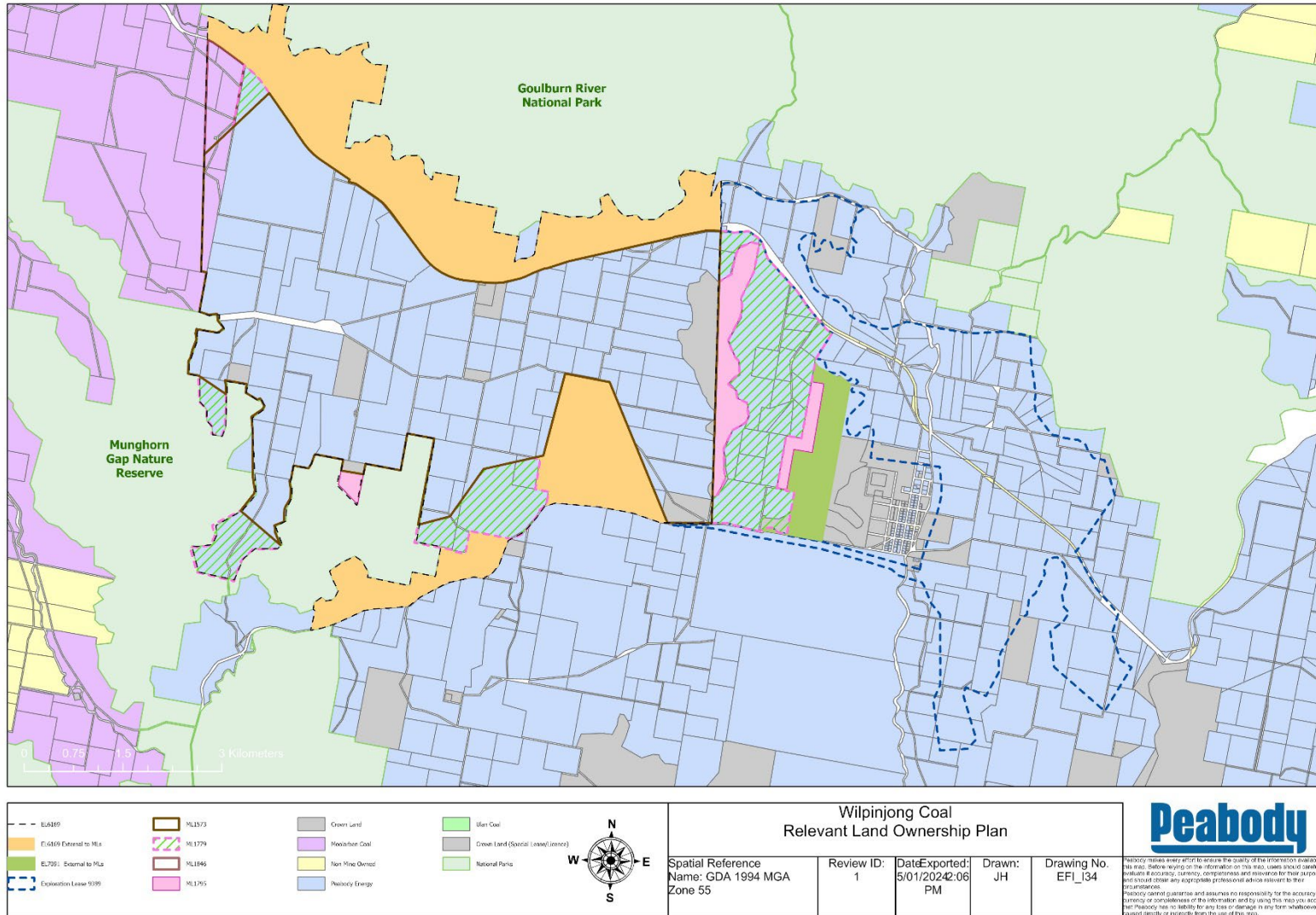


Figure 1: EL 6169 boundaries and land ownership

2.0 CONSULTATION UNDERTAKEN

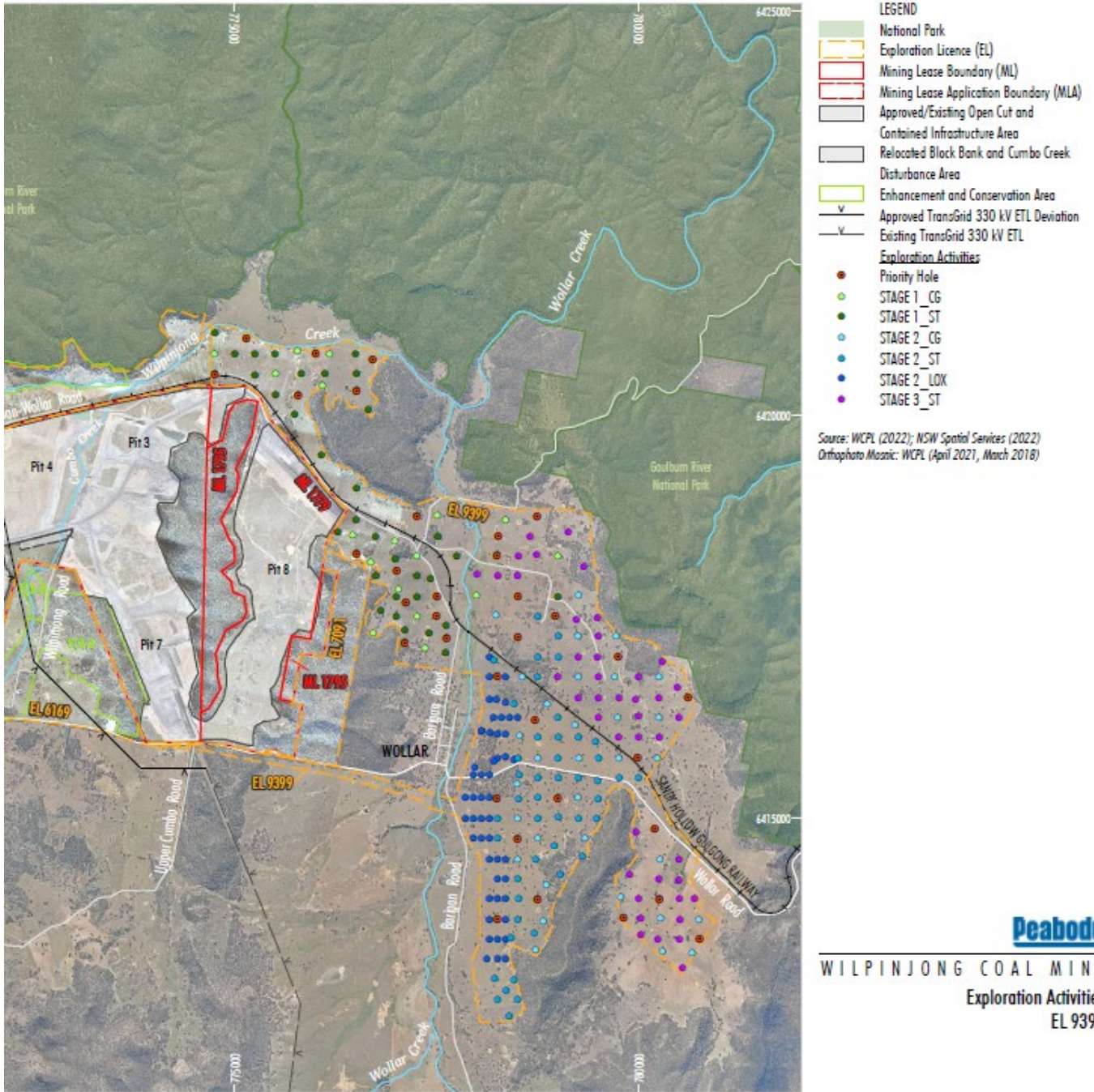
WCPL continues to undertake a targeted approach to stakeholder engagement relating to exploration and operational matters – including exploration activities associated with EL 6169. In general accordance with the WCPL's *Community Consultation Plan for EL 6169*, the following consultation was undertaken with key landholders and community representatives during the reporting period.

2.1 Agency Consultation

2.1.1 NSW Resources Regulator

Consultation was undertaken with the Senior Inspector Environment and Inspector Environment NSW Resource Regulator, Wilpinjong NSW, 4 August 2023. Whilst not directly related to EL 6169, proposed exploration activities within EL 9399 were discussed including:

- Assessable Prospecting Operations (APO) for first stage (89 drilling locations) approved 2 August 2022
- Assessable Prospecting Operations (APO) for second stage (170 drilling locations) approved 1 May 2023
- 97 holes complete to 18 July 2023
- Focus areas for upcoming drilling
- Preliminary observations from drilling including interception of igneous intrusions.
- Updates on status of Site Verification Certificate (SVC) & Biophysical Strategic Agricultural Land (BSAL)
- Updates on Works Programs & Renewal Justification Statements for EL 7091 & EL 6169



Peabody
WILPINJONG COAL MINE
Exploration Activities
EL 9399

Figure 2: WCPL EL 9399 proposed exploration activities

2.2 Community Consultation Committee (CCC)

In accordance with Condition 7, Schedule 5 of Development Consent SSD-6764, WCPL established a Community Consultation Committee (CCC) to the satisfaction of the Director-General in 2006. The CCC continues to operate as per the SSD and the Community Consultative Committee Guideline – State Significant Projects (NSW Department of Planning and Environment, June 2023). The WCPL CCC comprises an independent chairperson, representatives of the Mid-Western Regional Council (MWRC) and members of the local community.

Current community representative are:

- Chair approved by Director General of DP&E, funded by Peabody Australia;
- Community member (resident);
- Community member (former resident);
- Community member (lessee of Peabody pastoral land and former resident);
- Community member and lessee of the former Wollar General Store;
- NSW National Parks & Wildlife;
- Community member;
- Community member (resident); and
- MWRC Councillor.

WCPL representatives are:

- Environment & Community Manager;
- Manager Project Development and Approvals;
- Compliance Manager;
- Senior Environmental Advisor;
- Environmental Advisor; and
- Environmental Coordinator.

As indicated above, the WCPL CCC consists of a cross-section of the local community.

This committee is the primary mechanism by which exploration information is provided to the local community for awareness, updating and discussion.

The following table provides a summary of information provided to CCC members regarding exploration activities during meetings held throughout the reporting period.

It should be noted that information provided to CCC members during these meetings was related to the entire exploration drilling program across the Mining Leases, EL 6169, EL 7091 and EL 9399, and not only to EL 6169.

Table 1: Exploration Information provided to WCPL CCC

CCC Meeting Date	Exploration Summary
6 March 2023	<ul style="list-style-type: none"> • EL 9399 drill program status: <ul style="list-style-type: none"> • Completed 30 holes as of 1 March 2023. • Drill schedule delays due to labour issues and only one rig in operation (planned for two). • Second rig to start on 23 March 2023. • Current program plan (from March 23): <ul style="list-style-type: none"> • Area 2 completion in early April. • Area 1 drilling starts late March, completion in early May. • Tralee drilling with rig 2 (open hole rig) from late April to end of September, working from North to South. • Additional requirements: <ul style="list-style-type: none"> • GHG-specific cored holes and large diameter holes. • Minor rehab tasks post-completion. • Ongoing tasks: <ul style="list-style-type: none"> • Working on the next APO application for approximately 165 remaining holes. • All sites pegged, pre-drill photos captured. • Previous timing includes additional holes, baseline studies, BSAL soil testing, aquatic ecology, and biodiversity assessments. • Land contamination assessment commenced. • Assessment process to continue concurrently with exploration. • Inspection and activities: <ul style="list-style-type: none"> • Facilitated inspection of rehabilitated exploration sites associated with EL7406 for MEG on Cortina property Feb 23.
5 June 2023	<ul style="list-style-type: none"> • EL 9399 Drill Program Overview: <ul style="list-style-type: none"> • Entire planned program consists of 259 holes. • Stage 2 APO approved on May 1 for 170 holes, entire program now approved. • Drilling Progress: <ul style="list-style-type: none"> • Two rigs in operation, completed 57 holes as of 16 May. • Currently processing 2 GHG holes. • Program Timeline: <ul style="list-style-type: none"> • Plan to complete all holes by the end of June for full EL area coverage. • Current Program Plan:

CCC Meeting Date	Exploration Summary
	<ul style="list-style-type: none"> • Area 1 (north of pit 3): <ul style="list-style-type: none"> • Complete drilling by end of July; only core holes remain. • Area 2 (east of pit 8): <ul style="list-style-type: none"> • Complete drilling by June. • Tralee: <ul style="list-style-type: none"> • Commence drilling in June; complete by end of November (map of initial holes below). <p>Ongoing Tasks and Studies:</p> <ul style="list-style-type: none"> • Rehab tasks initiated in Area 1 and 2. • Baseline studies in progress. • BSAL initial soil testing completed. • Aquatic ecology conducted. • Biodiversity assessments ongoing. • Historic Heritage and Land contamination assessment completed. <p>Commissioning of remaining studies continues.</p>
4 September 2023	<p>EL 9399 Drill Program Progress (as of 29 Aug):</p> <ul style="list-style-type: none"> • 121 holes completed. • Results align with expectations. • Additional 2 GHG holes finished, covering the entire EL area. <p>Rehabilitation and Grouting:</p> <ul style="list-style-type: none"> • Ongoing rehabilitation and grouting activities. • 35 sites rehabilitated to date; 1 site remains in the area east of pit 8. • 60 holes have been grouted. <p>Upcoming Activities:</p> <ul style="list-style-type: none"> • A 3rd rig is set to commence on Sept 7. • The 3rd rig will initially target remaining holes in the Tralee area. <p>Baseline Studies and Notifications:</p> <ul style="list-style-type: none"> • Baseline studies ongoing. • SVC advertisement and application, along with ACHA notification in progress.

CCC Meeting Date	Exploration Summary
27 November 2023	<ul style="list-style-type: none">• 183 holes complete to 21 November• Approx 83 holes remain• Results continue as expected<ul style="list-style-type: none">○ Next swing 30 Nov – 13 Dec (3 rigs), then break from 14 Dec to 10 Jan. Returning 11 Jan 2024 <p>Drilling likely to be completed in Feb 2024</p>

2.3 Mid-Western Regional Council

The Mid-Western Regional Council received information relating to exploration drilling during the CCC meetings (refer to Table 1). Additionally, a dedicated session with MWRC on May 31, 2023, included an update on EL activities within EL 9399, among other topics.

2.4 Registered Aboriginal Parties Consultative Committee

In accordance with the project approved Aboriginal Cultural Heritage Management Plan, and site Aboriginal Consultation protocol WCPL continues to hold a Registered Aboriginal Parties Consultation Committee (RAPCC) meeting every six months (or more frequently if necessary). The purpose of the RAPCC meetings is to discuss operational cultural heritage issues at WCPL over the preceding year, and proposed works that will have cultural heritage implications for the Mine for the upcoming year.

This committee is comprised of one representative from each of the Registered Aboriginal Parties (RAPs), WCPL's Environment and Community Manager and WCPL's Manager Project Development and Approvals. In addition, a WCPL provides administrative support for the purpose of keeping the minutes of the meetings.

RAPCC meetings during the reporting period were held on:

- 20 March 2023
- 19 June 2023
- 8 September 2023
- 1 December 2023.

Information relating to exploration provided to RAPCC was identical to the information provided to CCC members. No additional issues of concern relating to exploration activities were raised by members during these meetings.

2.5 Cultural Heritage Liaison Sub-Committee

The Cultural Heritage Liaison Sub Committee (CHLSC) was formed as a means by which WCPL could consult with members of the Aboriginal community who are party to the existing Native Title Ancillary Agreement. The CHLSC will continue to operate in order to deal with cultural heritage matters as specified in the terms of the Ancillary Agreement. In accordance with the "Ancillary Agreement", all matters associated with the implementation of the Agreement will remain confidential between the parties to the Ancillary Agreement. The CHLSC will convene in accordance with the Ancillary Agreement to discuss cultural heritage issues at the Mine over the preceding year, and proposed works that will have cultural heritage implications for the Mine for the upcoming year.

CHLSC meetings during the reporting period were held on:

- 21 March 2023
- 20 June 2023
- 11 September 2023
- 4 December 2023.

Information relating to exploration provided to CHLSC was identical to the information provided to CCC and RAPCC members. No additional issues of concern relating to exploration activities were raised by members during these meetings.

2.6 Landholder Communication

During the reporting period, landholder consultation was undertaken with the following lease holders:

- Leasee 1 – 3rd March, 14th April, 19th & 25th May, 28th June and 24th July 2023. and
- Leasee 2 – 2nd February 14th April, 4th & 25th May and 7th September 2023

Both lease holders were provided with information regarding:

- Exploration Geologist program;
- Site location, access and preparation activities;
- Infrastructure related impacts; and
- Number of drill rigs and operational times.

An example of the communication to the lease holder has been provided in Appendix 1.

2.7 'Have a Chat' - informal meetings

WCPL provides the local community with an opportunity to discuss operational and exploration (all mining) activities on a monthly basis. These 'Have a Chat' sessions are held on a one-on-one basis at the local Wollar General Store. The community is advised about 'Have a Chat' sessions via the WCPL website, during CCC meetings, and via posters at the Wollar General Store. Details of exploration specific consultation are captured in Table 2 below.

Table 2 - Exploration specific consultation

Have a Chat	Attendees	Exploration related discussion points
2 February 2023	Lease holder	Exploration and Rehabilitation status update Exploration Access requirements
4 May 2023	Five Community Members and Lease holder	Future project and modification areas in relation to current exploration program Exploration and Rehabilitation status update Lease specific Exploration and Rehabilitation update
7 September 2023	Lease holder	Exploration and Rehabilitation status update

3.0 OUTCOMES OF CONSULTATION

During the reporting period, stakeholders were consulted about current and future exploration activities – noting no exploration activities undertaken in EL 6169. Information provided and discussed related to exploration activities in EL 9399 and included:

- Program status – location & timing
- Types of drill holes;
- Preparation works;
- Weather & equipment-related impacts;
- Rehabilitation works; and
- Upcoming exploration applications.

Questions raised by community members during Exploration consultation related to:

- Drill rig locations;
- Assessment process for each drill location;
- Converting drill holes to water monitoring locations;
- Program delays & weather considerations;
- Potential Project approval pathways;
- Infrastructure relocation/realignment requirements; and
- Site rehabilitation status/timing.

No issues of concern or complaints relating to exploration activities were received by WCPL.

During the reporting period no issues of concern or feedback regarding the exploration activities relating to EL 6169 were raised by members of the public or Government Departments.

During community consultation WCPL requested feedback from both community groups and Government Regulators regarding the method of consultation for exploration activities. Neither party had any issues with the current consultation format.

3.1 Proposed Future Consultation

WCPL proposes to continue to inform the local community and landholders/leasees about exploration and operational matters via the current avenues, namely, quarterly CCC meetings, WCPL website and targeted stakeholder communication. Community members are also able to communicate issues or concerns to WCPL staff during the monthly Wollar 'Have a Chat' sessions or via the 1300 community enquiries line at any time.

WCPL proposes to continue providing updated exploration activities on the company website. (<http://www.peabodyenergy.com/content/427/Australia-Mining/New-South-Wales/Wilpinjong-Mine/>)

Regarding government agency consultation, WCPL will continue to prepare and submit all appropriate documentation to the relevant agencies for approval. This includes the appropriate Activity Approvals for Exploration and notice of intent to undertake exploration drilling.

WCPL will continue to review and update the Community Consultation Strategy and Plan as required during 2024.

4.0 ENQUIRIES & COMPLAINTS

A protocol for the management and reporting of complaints has been developed as a component of the Mine Environmental Management System (EMS). In accordance with Condition M6.1 of Environmental Protection Licence (EPL 12425), a dedicated telephone number for the provision of comments or complaints is maintained by WCPL. This number is 1300 606 625.

In accordance with Condition M6.2 of the WCPL's EPL (12425), this telephone number is advertised in local newspapers quarterly, via the Wilpinjong community newsletter and on the Peabody website.

WCPL has developed a Complaint Response Protocol to ensure community concerns – including concerns regarding exploration – are appropriately managed and addressed. The response protocol is outlined below:

1. Accurately recording all relevant details regarding the complaint in a Complaints Register, including:
 - The date and time of the complaint;
 - The method by which the complaint was made; (e.g., phone, email);
 - Any personal details provided by the complainant (e.g., name and address) or, if no such details were provided, a note to that effect;
 - The nature of the complaint;
 - The action taken by the WCPL in relation to the complaint, including any follow-up contact with the complainant; (*See also*, steps 2-4) and
 - If no action was taken by the licensee, the reasons why no action was taken.
2. Undertaking investigations into the likely cause of the complaint using relevant information including meteorological conditions, activities occurring related to exploration and the time of the complaint;
3. Assessing and implementing additional control measures, if required; and
4. Monitoring and assessing the effectiveness of the additional controls.

WCPL records and responds to all complaints and maintains a complaints register on its website. The complaints are managed in accordance with the WCPL Complaints Management Protocol.

During the reporting period, no complaints or enquires relating to exploration activities relating to EL 6169 were received by WCPL.

Appendix 1 – Leaseholder communication.

The screenshot shows an Outlook email window titled "FW: Slashing Priority Holes - Message (HTML)". The interface includes a ribbon with tabs for File, Message, Help, Acrobat, and Tell me what you want to do. The Message tab is active, showing options like Ignore, Delete, Archive, Reply, Reply All, Forward, Meeting, IM, More, Move, Send to OneNote, Actions, Mark Unread, Categorize, Follow Up, Editing, Read Aloud, Immersive Reader, Translate, and Zoom. The email content is as follows:

FW: Slashing Priority Holes

[Redacted]

← Reply ← Reply All → Forward ...

Fri 14/04/2023 9:43 AM

This message was sent with High importance.

Slashing_PR_Holes_2023 April_reduced.pdf
.pdf File

[Redacted]

Preparation works for exploration drilling within your lease area from Mogo Road to the east will commence in the next week or two. There will be a contractor slashing the planned drill site locations (40m by 40m) and if necessary the tracks to the drill sites.

The attached maps show the planned drill sites and tracks. The work will commence in the north in the Araluen Road area and progress south.

The first map shows all holes planned to be prepared then drilled. Then the subsequent maps zoom in for me detail.

- Page 2 – Rosedale area
- Page 4 – Araluen lane/road intersection area
- Page 5 – Araluen lane area
- Page 6 – area around your house
- Page 9 – Mogo road area

Any questions let me know.

Thanks

[Redacted]