



# ANNUAL COMMUNITY CONSULTATION REPORT

for

EXPLORATION LICENCE NO. 7091 (*Mining Act, 1992*)

<b>Project Name</b>	<b>Wilpinjong Coal Mine</b>
<b>Location</b>	<b>1434 Ulan – Wollar Road, Wilpinjong NSW 2850</b>
<b>Operator</b>	<b>Wilpinjong Coal Propriety Limited</b>
<b>EL Grant Date</b>	<b>3 March 2008</b>
<b>EL Expiry Date</b>	<b>3 March 2019<sup>^</sup></b>
<b>Reporting Period</b>	<b>3 March 2022 - 2 March 2023</b>

<sup>^</sup> Renewal application lodged with DPIE 28 February 2019 for 5 years

**Compiled by: Kieren Bennetts**

*Environment & Community Manager - Wilpinjong Coal Mine*

Phone: +61 2 6370 2520 Mobile: +61(0)488 103 807

Email: [kbennetts@peabodyenergy.com](mailto:kbennetts@peabodyenergy.com)

9 March 2023

## LIST OF CONTENTS

---

1.0	INTRODUCTION .....	4
2.0	CONSULTATION UNDERTAKEN .....	6
2.1	Agency Consultation.....	6
2.1.1	Department of Regional NSW – Resources RegulatorError! Bookmark not defined.	
2.2	Community Consultation Committee (CCC).....	10
2.3	Mid-Western Regional Council .....	12
2.4	Registered Aboriginal Parties Consultative Committee.....	13
2.5	Cultural Heritage Liaison Sub-Committee .....	13
2.6	Landholder Communication .....	14
2.7	'Have a Chat' - informal meetings.....	14
3.0	OUTCOMES OF CONSULTATION .....	15
3.1	Proposed Future Consultation .....	15
4.0	ENQUIRIES & COMPLAINTS .....	16

## LIST OF TABLES

---

Table 1:	Exploration Information provided to WCPL CCC.....	11
----------	---	----

## LIST OF FIGURES

---

Figure 1 :	EL 7091 boundaries and land ownership.....	5
Figure 2 :	WCPL EL 9399 proposed exploration activities.....	9

## EXECUTIVE SUMMARY

---

The Wilpinjong Coal Mine (the Mine) is owned by Wilpinjong Coal Pty Limited (WCPL), a wholly-owned subsidiary of Peabody Energy Australia Pty Ltd (Peabody). The Mine is located approximately 40 kilometres north-east of Mudgee, near the Village of Wollar, within the Mid-Western Regional Local Government Area, in central New South Wales.

Exploration Licence 7091 was originally granted on 3 March 2008. This licence expired on 3 March 2019 and an application for renewal was submitted to NSW Department of Planning, Industry and Environment, Division of Resources and Geoscience on 28 February 2019. At the time of writing, a notice of renewal had not formally been received by the Mine.

As per the Community Consultation Condition of the previous licence, an annual report detailing consultation undertaken during the reporting period is to be compiled and provided to the Mining, Exploration and Geoscience Department of Regional NSW-

This report provides a summary of the community consultation undertaken as per the *Guideline for community consultation requirements for exploration Version 2.1 (10 May 2016)*, for the reporting period 3 March 2022 to 2 March 2023. Key consultation undertaken during the reporting period includes:

- Face to face meeting with the Acting Manager Regulatory Operations and Regional Operations Officer NSW Environment Protection Authority, Wilpinjong NSW, 13 September 2022.
- Wilpinjong Coal Mine Community Consultative Committee (CCC) meeting updates relating to the current and future drilling program.
- Aboriginal consultation via the Registered Aboriginal Parties Consultation Committee (RAPCC) and Cultural Heritage Liaison Sub-Committee (CHLSC).
- Monthly informal 'Have a Chat' community consultation (face to face 'drop-in' sessions).

During the reporting period, key stakeholders and the broader community were informed about current and future exploration activities, including:

- Exploration Applications
- Approval status
- Planned drilling program
- Location of drill rigs
- Timing of works,
- COVID and weather-related impacts
- Rehabilitation works

No issues of concern or complaints relating to exploration and/or drilling activities were received by the Wilpinjong Coal Environment and Community department during the reporting period.

## 1.0 INTRODUCTION

---

The Wilpinjong Coal Mine (the Mine) is owned by Wilpinjong Coal Pty Limited (WCPL), a wholly-owned subsidiary of Peabody Energy Australia Pty Ltd (Peabody). The Mine is an existing open cut coal mine situated approximately 40 kilometres north-east of Mudgee, near the Village of Wollar, within the Mid-Western Regional Local Government Area, in central New South Wales. The mine produces thermal coal products which are transported by rail to domestic customers for use in electricity generation and to the Port of Newcastle for export. Open cut mining operations and associated mobile equipment movements are undertaken 24 hours per day, seven days a week.

Project Approval (05-0021) was granted by then Minister for Planning under Part 3A of the *NSW Environmental Planning and Assessment Act, 1979* on 1 February 2006, following submission of the Wilpinjong Coal Project Environmental Impact Statement in May 2005. Since the original approval was granted, this Project Approval has been modified six times. Mining Lease (ML) 1573 was subsequently granted by the Minister for Primary Industries, on 8 February 2006.

The then Minister for Mineral Resources granted Exploration Licence (EL) 7091 to WCPL under the *NSW Mining Act*, on 3 March 2008, with an initial expiry date of 3 March 2014. WCPL submitted an application for renewal of this licence in February 2014, which the Department approved and WCPL was subsequently reissued with a licence until 3 March 2019.

A renewal application was lodged with DPIE by Wilpinjong Coal on 28 February 2019. At the time of writing, a notice of renewal had not formally been received by the Mine.

On 8 January 2016, Wilpinjong Coal submitted an Environmental Impact Statement (EIS) for the Wilpinjong Extension Project (WEP) to the NSW DPE. The EIS was prepared to accompany a Development Application made for the WEP as a State Significant Development (SSD), in accordance with Part 4 of the *NSW Environmental Planning and Assessment Act, 1979*. On 24 April 2017, the NSW Planning Assessment Commission, granted approval, subject to the conditions of consent to SSD 6764. PA (05-0021) is currently in the process of being surrendered. WCPL is therefore operating in accordance with SSD 6764. Mining Lease (ML) 1779 was granted by the Minister for Resources, on 20 December 2018 and Mining Lease (ML) 1795 was granted by the Minister Administering the Mining Act 1992, on 27 September 2019. Both Mining Leases were granted over sections of the former Exploration Lease (EL) 7091. Please refer to **Figure 1** for further detail.

Condition 7 of EL 7091 states – ‘An annual report on Community Consultation must be submitted to the department within 28 days of the anniversary being granted’. Therefore, this report details the relevant community consultation undertaken from 3 March 2022 to 2 March 2023. This report has also been prepared as a requirement of the *Exploration code of practice: community consultation Version 1.1 (NSW Department of Industry – Resources & Energy, 2016)* and in accordance with the *Guideline for community consultation requirements for exploration Version 2.1 (10 May 2016)*.

**Figure 1** illustrates the areas subject to the relevant mining leases, together with land ownership details. More detailed information regarding land ownership in the Village of Wollar is available upon request. Since its acquisition of the Wilpinjong Coal Mine in 2006, Peabody Energy has also acquired a range of adjacent rural properties and lands to the east and south-east of the mine. As shown, the major landowner of the areas subject to this EL is Peabody Energy.

WILPINJONG COAL MINE COMMUNITY CONSULTATION REPORT  
 EL 7091: 3 March 2022 - 2 March 2023

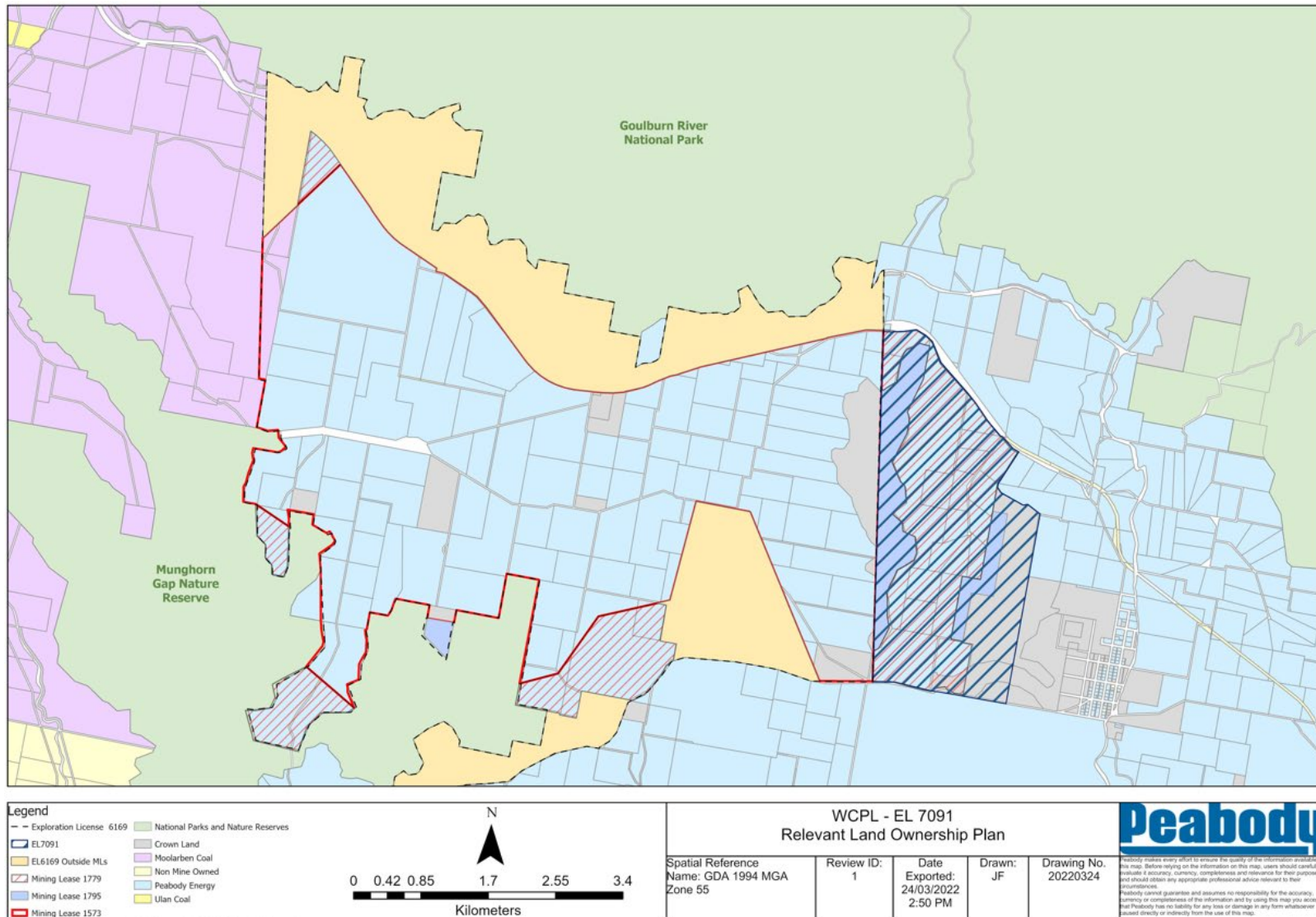


Figure 1 : EL 7091 boundaries and land ownership

## 2.0 CONSULTATION UNDERTAKEN

---

WCPL continues to undertake a targeted approach to stakeholder engagement relating to exploration and operational matters – including exploration activities associated with EL 7091. In general accordance with the WCPL's *Community Consultation Plan for EL 7091*, the following consultation was undertaken with key landholders and community representatives during the reporting period.

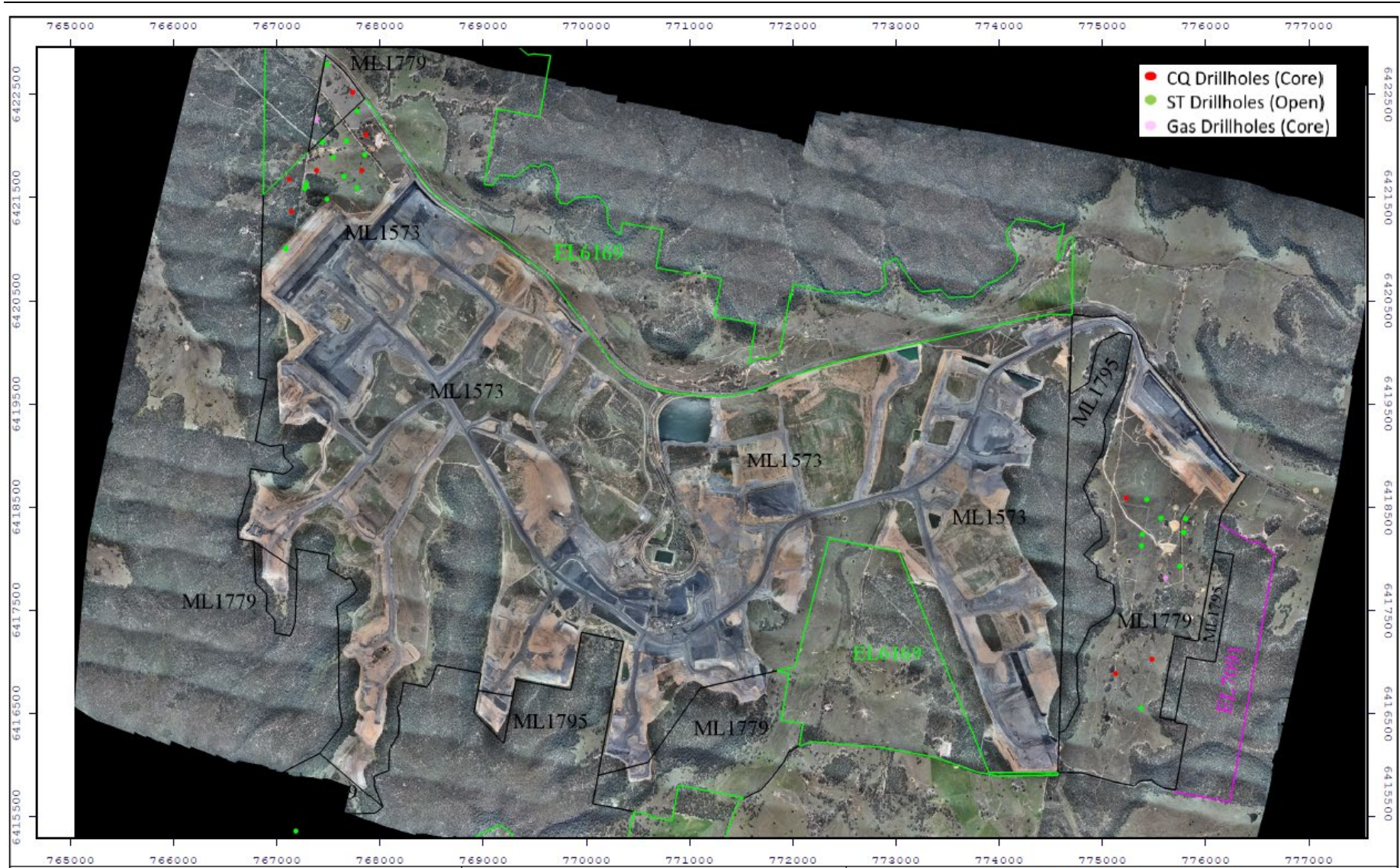
### 2.1 Agency Consultation

#### 2.1.1 NSW Environment Protection Authority

Consultation was undertaken with the Acting Manager Regulatory Operations and the Regional Operations Officer NSW Environment Protection Authority, Wilpinjong NSW, 13 September 2022. Whilst not directly related to EL6169, proposed exploration activities within EL 9399 were discussed including:

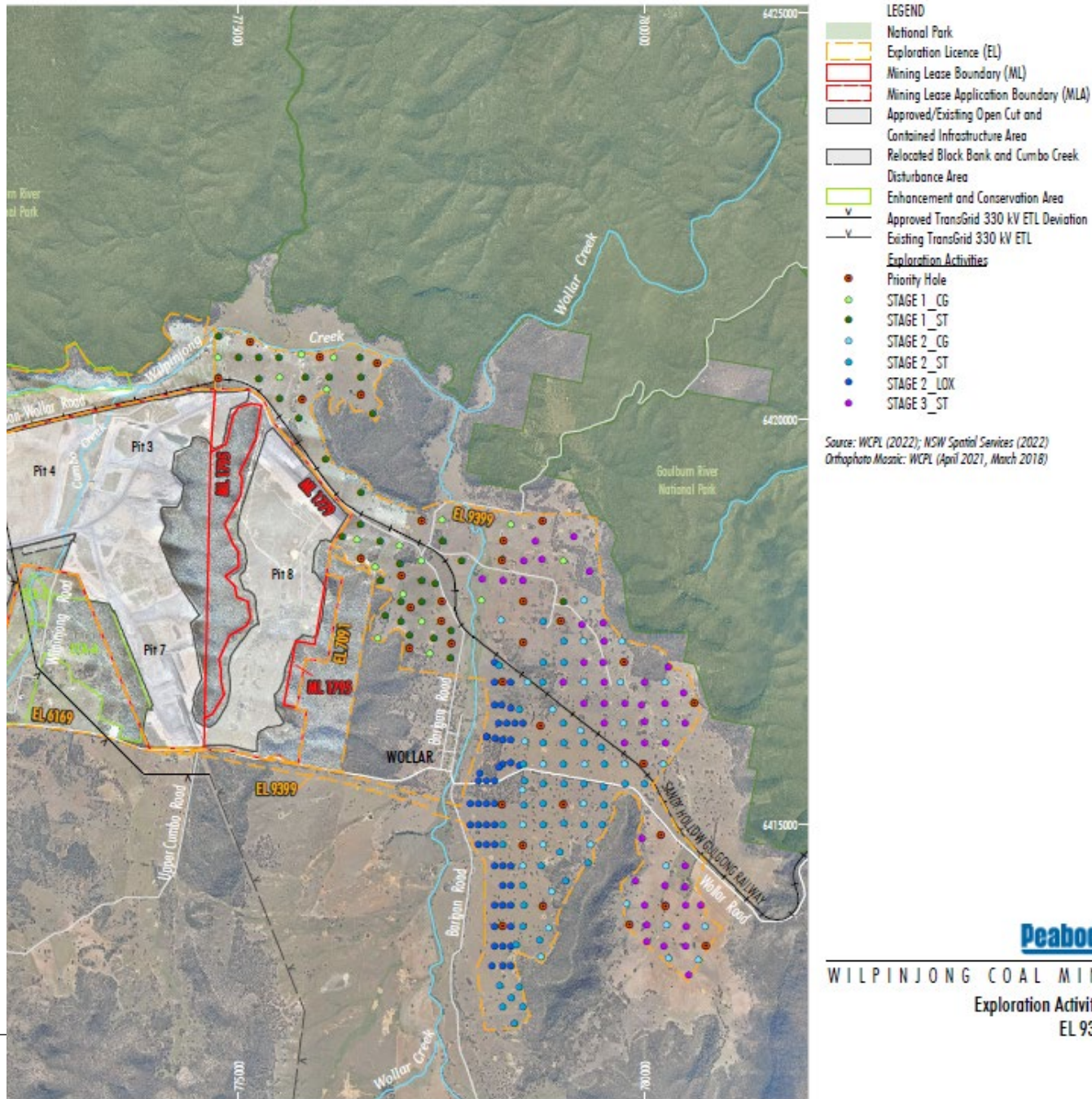
- EL 9399 tenement approval update
- 253 planned drill sites proposed to be divided into two stages
- Assessable Prospecting Operations (APO) for first stage (89 drilling locations) approved 2 August 2022
- On ground works will commence for first stage once all preparatory conditions and requirements of the APO are met – targeting 19 September 2022.
- Separate APO application to be lodged for second stage - 164 drilling locations

WILPINJONG COAL MINE COMMUNITY CONSULTATION REPORT  
EL 7091: 3 March 2022 - 2 March 2023



# WILPINJONG COAL MINE COMMUNITY CONSULTATION REPORT

EL 7091: 3 March 2022 - 2 March 2023



WILPINJONG COAL MINE  
 Exploration Activities  
 EL 9399



**Figure 2 : WCPL EL 9399 proposed exploration activities**

## 2.2 Community Consultation Committee (CCC)

In accordance with Condition 7, Schedule 5 of Development Consent SSD-6764, WCPL established a Community Consultation Committee (CCC) to the satisfaction of the Director-General in 2006. The CCC continues to operate as per the SSD and the recently released Community Consultative Committee Guidelines – State Significant Projects (NSW Department of Planning, November 2016). The WCPL CCC comprises an independent chairperson, representatives of the Mid-Western Regional Council (MWRC) and members of the local community.

Current community representatives are:

- Chair approved by Director General of DP&E, funded by Peabody Australia;
- Community member (resident);
- Community member (former resident);
- Community member (lessee of Peabody pastoral land and former resident);
- Community member and lessee of Wollar General Store;
- National Parks & Wildlife;
- NSW NPS - Goulburn River & Munghorn Ranger
- Community member
- Community member (resident); and
- MWRC Councillor

WCPL representatives are:

- General Manager;
- Environment & Community Manager;
- Manager Project Development and Approvals;
- Compliance Manager, Wilpinjong Coal
- Senior Environmental Advisor; and
- Environmental Advisor.

As indicated above, the WCPL CCC consists of a cross-section of the local community.

This committee is the primary mechanism by which exploration information is provided to the local community for awareness, updating and discussion.

The following table provides a summary of information provided to CCC members regarding exploration activities during meetings held throughout the reporting period.

It should be noted that information provided to CCC members during these meetings was related to the entire exploration drilling program across the Mining Leases, EL 6169, EL 7091 and EL 9399, and not specifically to EL 7091.

**Table 1: Exploration Information provided to WCPL CCC**

CCC Meeting Date	Exploration Summary
7 March 2022	<ul style="list-style-type: none"> <li>• No Exploration drilling program in 2022 for EL 6169 or EL 7019</li> <li>• Cementing of boreholes and drill site rehabilitation drilled in 2021 have commenced, expected to be completed by end of March 2022.</li> <li>• Cementing of boreholes and drill site rehabilitation delayed due to wet weather (wet ground conditions) and to COVID restrictions</li> </ul> <p>ELA 6415 status</p> <ul style="list-style-type: none"> <li>• Application lodged 17 December 2021</li> <li>• Advertised in the Mudgee Guardian (local) and The Land (State) newspaper as required</li> <li>• Public comment period from 21 January 2022 (date of initial advertisement) to 24 February 2022</li> <li>• WCPL response to comments provided to NSW Mining, Exploration and Geoscience 1 March 2022</li> </ul> <p>Community questions regarding the mines intent to drill both Exploration</p>
6 June 2022	<ul style="list-style-type: none"> <li>• No Exploration drilling program in 2022 for EL 6169 or EL 7019</li> </ul> <p>Map of 2021 exploration holes presented.</p> <ul style="list-style-type: none"> <li>• Cementing of boreholes in Pit 8 has been completed</li> <li>• Cementing of boreholes in Pit 6 and drill site rehabilitation are delayed due to wet weather (wet ground conditions)</li> </ul> <p>EL 9399</p> <ul style="list-style-type: none"> <li>• Approved 4 May 2022</li> <li>• Covers 1670 ha</li> <li>• anticipate drilling commencing end of August 2022</li> <li>• 2 - 3 rigs; 7 days a week</li> <li>• ~250 holes</li> <li>• ~3-year program</li> <li>• All holes drilled with above ground sumps</li> </ul> <p>Map of the exploration licence area presented</p>
5 September 2022	<p>EL 9399</p> <p>Assessable Prospecting Operations (APO) Approved 2 August 2022</p> <ul style="list-style-type: none"> <li>• Covers 89 holes</li> <li>• Up to 3 drill rigs – only 1 rig confirmed at this stage</li> <li>• Drilling 6.30am to 6.30pm – 7 days</li> <li>• Drilling to commence 19 September 2022</li> <li>• Each rig supported by a light vehicle and 2 light trucks</li> <li>• Approx. 12-month program</li> <li>• All holes drilled with above ground sumps</li> </ul> <p>Working on next APO for the remaining holes, approximately 160.</p>

CCC Meeting Date	Exploration Summary
28 November 2022	EL 9399 <ul style="list-style-type: none"> <li>• Commenced drilling on 19th September 2022</li> <li>• Completed 6 drill holes to date</li> <li>• Significantly behind on drill schedule                             <ul style="list-style-type: none"> <li>○ Wet weather/site access</li> <li>○ Only 1 rig in operation not 2 as scheduled</li> </ul> </li> <li>• Looking at options to commence with 2nd rig early 2023 – pending rig availability</li> <li>• Working on next APO for the remaining approx. 160 holes</li> <li>• All sites pegged and pre-drill photos captured</li> <li>• Baseline studies                             <ul style="list-style-type: none"> <li>○ BSAL soil testing commenced</li> <li>○ Aquatic ecology conducted</li> <li>○ Biodiversity assessments commenced</li> <li>○ Assessment process to continue concurrently with exploration</li> </ul> </li> </ul>

### 2.3 Mid-Western Regional Council

Information relating to exploration drilling was provided to the Mid-Western Regional Council during the CCC meetings (See **Table 1**).

## 2.4 Registered Aboriginal Parties Consultative Committee

In accordance with the project approved Aboriginal Cultural Heritage Management Plan, and site Aboriginal Consultation protocol WCPL continues to hold a Registered Aboriginal Parties Consultation Committee (RAPCC) meeting every six months (or more frequently if necessary). The purpose of the RAPCC meetings is to discuss operational Cultural Heritage issues at WCPL over the preceding year and proposed works that will have cultural heritage implications for the Mine for the upcoming year.

This committee is comprised of one representative from each of the Registered Aboriginal Parties (RAPs) WCPL Environment and Community Manager and the Project Approval Manager. In addition, a WCPL provides administrative support for the purpose of keeping the minutes of the meetings.

RAPCC meetings during the reporting period were held on:

- 11 March 2022
- 20 June 2022
- 19 September 2022
- 5 December 2022.
- 

Information relating to exploration provided to RAPCC was identical to the information provided to CCC members. No additional issues of concern relating to exploration activities were raised by members during these meetings.

## 2.5 Cultural Heritage Liaison Sub-Committee

The Cultural Heritage Liaison Sub Committee (CHLSC) was formed as a means by which WCPL could consult with members of the Aboriginal community who are party to the existing Ancillary Agreement. The CHLSC will continue to operate in order to deal with cultural heritage matters as specified in the terms of the Ancillary Agreement. In accordance with the “Ancillary Agreement”, all matters associated with the implementation of the Agreement will remain confidential between the parties to the Ancillary Agreement. The CHLSC will convene in accordance with the Ancillary Agreement to discuss cultural heritage issues at the Mine over the preceding year, and proposed works that will have cultural heritage implications for the Mine for the upcoming year.

CHLSC meetings during the reporting period were held on:

- 15 March 2022
- 21 June 2022
- 29 September 2022
- 13 December 2022.
- 

Information relating to exploration provided to CHLSC was identical to the information provided to CCC members. No additional issues of concern relating to exploration activities were raised by members during these meetings.

## 2.6 Landholder Communication

During the reporting period, landholder consultation was undertaken with following lease holders:

- Leasee 1- 7<sup>th</sup> June 2022 and 2<sup>nd</sup> & 6<sup>th</sup> September 2022; and
- Leasee 2 - 7<sup>th</sup> June 2022, 2<sup>nd</sup> & 6<sup>th</sup> September 2022

Both lease holders were provided with information regarding:

- Exploration program commencement;
- Site location, access and preparation activities;
- Type of exploration activities;
- Number of drill rigs and operational times; and
- Duration of program

An example of the communication to the lease holder has been provided in Appendix 1.

## 2.7 'Have a Chat' - informal meetings

WCPL provides the local community with an opportunity to discuss operational and exploration (all mining) activities on a monthly basis. These 'Have a Chat' sessions are held on a one-on-one basis at the local Wollar General Store. The community is advised about 'Have a Chat' sessions via the WCPL website, during CCC meetings, and via posters at the Wollar General Store.

## 3.0 OUTCOMES OF CONSULTATION

---

During the reporting period, stakeholders were consulted about current and future exploration activities – noting no exploration activities undertaken in EL 7091. Information provided and discussed related to exploration activities in ML 1573, ML 1779 & ML 1795 and included:

- Location of drill rigs
- Timing of works,
- Types of drill holes
- Contractors utilised.
- COVID and weather-related impacts
- Rehabilitation works

No issues of concern or complaints relating to exploration activities were received by WCPL.

During the reporting period no issues of concern or feedback regarding the exploration activities relating to EL 7091 were raised by members of the public or Government Departments.

During community consultation WCPL requested feedback from both community groups and Government Regulators regarding the method of consultation for exploration activities. Neither party had any issues with the current consultation format.

### 3.1 Proposed Future Consultation

WCPL proposes to continue to inform the local community and landholders/lessees about exploration and operational matters via the current avenues, namely, quarterly CCC meetings, WCPL website and targeted stakeholder communication. Community members are also able to communicate issues or concerns to WCPL staff during the monthly Wollar 'Have a Chat' sessions or via the 1300 community enquiries line at any time.

WCPL proposes to continue providing updated exploration activities on the company website. (<http://www.peabodyenergy.com/content/427/Australia-Mining/New-South-Wales/Wilpinjong-Mine/>)

Regarding government agency consultation, WCPL will continue to prepare and submit all appropriate documentation to the relevant agencies for approval. This includes the appropriate Activity Approvals for Exploration and notice of intent to undertake exploration drilling.

WCPL will continue to review and update the Community Consultation Strategy and Plan as required during 2023.

## 4.0 ENQUIRIES & COMPLAINTS

---

A protocol for the management and reporting of complaints has been developed as a component of the Mine Environmental Management System (EMS). In accordance with Condition M6.1 of Environmental Protection Licence (EPL 12425), a dedicated telephone number for the provision of comments or complaints is maintained by WCPL. This number is 1300 606 625.

In accordance with Condition M6.2 of the WCPL's EPL (12425), this telephone number is advertised in local newspapers quarterly, via the Wilpinjong community newsletter and on the Peabody website.

WCPL has developed a Complaint Response Protocol to ensure community concerns – including concerns regarding exploration – are appropriately managed and addressed. The response protocol is outlined below:

1. Accurately recording all relevant details regarding the complaint in a Complaints Register, including:
  - The date and time of the complaint;
  - The method by which the complaint was made; (e.g. phone, email);
  - Any personal details provided by the complainant (e.g. name and address) or, if no such details were provided, a note to that effect;
  - The nature of the complaint;
  - The action taken by the WCPL in relation to the complaint, including any follow-up contact with the complainant; (*See also*, steps 2-4) and
  - If no action was taken by the licensee, the reasons why no action was taken.
2. Undertaking investigations into the likely cause of the complaint using relevant information including meteorological conditions, activities occurring related to exploration and the time of the complaint;
3. Assessing and implementing additional control measures, if required; and
4. Monitoring and assessing the effectiveness of the additional controls.

WCPL records and responds to all complaints and maintains a complaints register on its website. The complaints are managed in accordance with the WCPL Complaints Management Protocol.

During the reporting period, no complaints or enquires relating to exploration activities relating to EL 7091 were received by WCPL.



## Appendix 1 – Leaseholder communication.

The screenshot shows an Outlook email window titled "EL9399 - commencement of on ground works - Message (HTML) (Read-Only)". The interface includes a ribbon with "File", "Message", "Help", and "Acrobat" tabs. The "Message" tab is active, showing options like "Delete", "Archive", "Reply", "Reply All", "Forward", "Share to Teams", "Move", "Tags", "Editing", "Immersive", "Translate", "Zoom", "Viva Insights", and "Report Spam".

The email content is as follows:

EL9399 - commencement of on ground works

[Redacted]

Tue 6/09/2022 1:31 PM

site plan from APO.pdf  
6 MB

[Redacted]

Just wanted to give you an update on planned drilling activities;

- This week there will be a contractor floating about pegging hole locations
- Next week there will be slashing starting at the drill sites – a 40m by 40m area for each drill site
- The drill rig will commence drilling on 19 Sept – the focus area for the drilling will be the sites directly north of Slate Gully and directly east of Slate Gully.

I have attached a copy of the drill hole locations map and also the slides I provided to the CCC as an update at the meeting yesterday.

[Redacted] – I have included you to keep you up to date but you will not see any activity in your area for a few months yet

**Exploration Licence 9399**

- EL 9399 status
  - Assessable Prospecting Operations (APO)
    - Approved 2 August 2022
      - Covers 89 holes
      - Up to 3 drill rigs – only 1 rig confirmed at this stage
      - Drilling 6.30am to 6.30pm – 7 days
      - Drilling to commence 19 Sept 2022
      - Each rig supported by a light vehicle and 2 light trucks
      - Approx. 12 month program
      - All holes drilled with above ground sumps

The email includes a map showing the drilling sites and a Peabody logo at the bottom left of the slide content.

WILPINJONG COAL MINE COMMUNITY CONSULTATION REPORT  
EL 7091: 3 March 2022 - 2 March 2023

EL9399 - commencement of on ground works - Message (HTML) (Read-Only)

File Message Help Acrobat Tell me what you want to do

Delete Archive Reply Reply All Forward Share to Teams Visitors to site To Manager Team Email Move Tags Editing Immersive Translate Zoom Viva Insights Report Spam

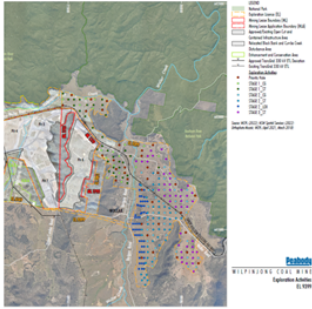
EL9399 - commencement of on ground works

Reply Reply All Forward Tue 6/09/2022 1:31 PM

site plan from APO.pdf 6 MB

### Exploration Licence 9399


- EL 9399 drill program
  - Working on next APO for the remaining approx. 160 holes



Peabody

Please let me know if you have any questions

Thanks



Peabody