

APPENDIX 4
REHABILITATION &
LAND MANAGEMENT

2023 Rehabilitation Photographic Register

Please refer to **Figure 4A** for locations of photographs and **Table 4A** and **Table 4B** for the 2023 Rehabilitation Photographic Register.

Notes: Previous annual photos of rehabilitation activities provide an historical account of the performance of primarily cover crops, until the performance and completion criteria for BVT and Regent Honeyeater habitat relevant to the Mine’s rehabilitation areas was approved on the 24 April 2019 (**Table 4A**).

WCPL are in the process of establishing new photographic monitoring points in select rehabilitated areas of the mine (**Table 4B**).

Figure 4-A Rehabilitation Photo Monitoring Points

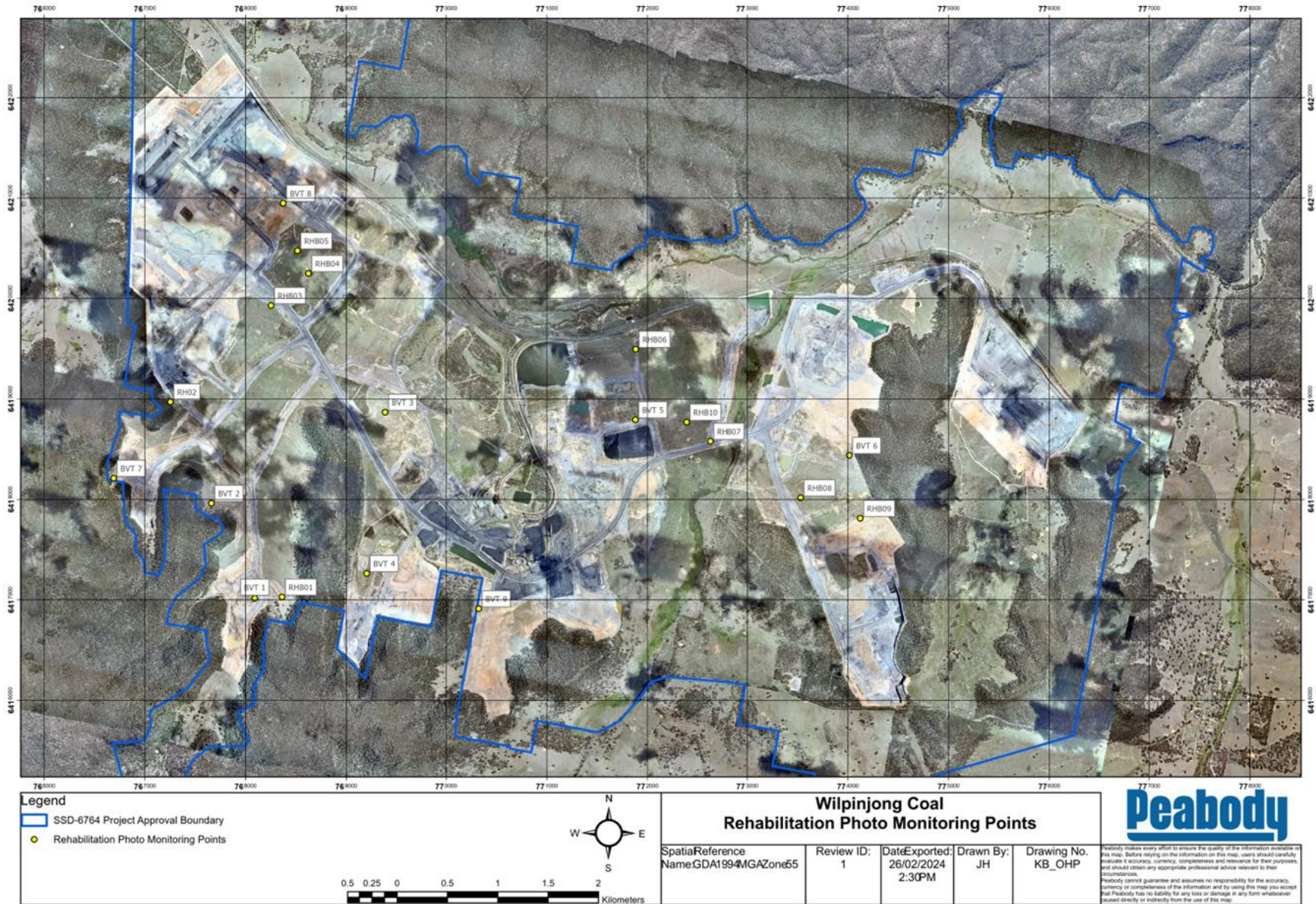


Table 4-A – Rehabilitation Photographic Register (Cover Crops)

Rehabilitation – Photo Locations

RHB01 (2017)



RHB01 (2019)



Rehabilitation – Photo Locations

RHB01 (2020)



RHB01 (2021)



Rehabilitation – Photo Locations

RHB01 (2022)

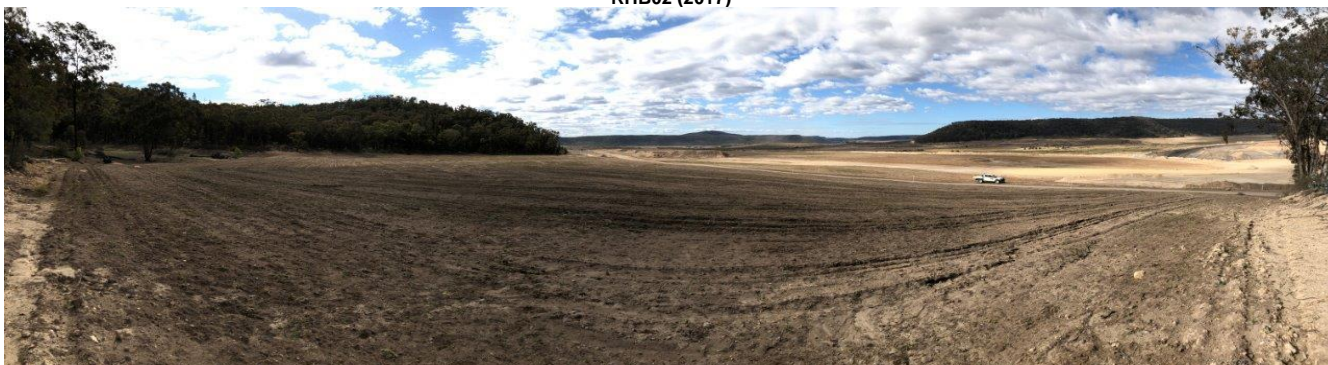


RHB (2023)



Rehabilitation – Photo Locations

RHB02 (2017)



RHB02 (2019)



RHB02 (2020)



RHB02 (2021)



RHB02 (2022)



RHB02 (2023)



Rehabilitation – Photo Locations

RHB03 (2017)



RHB03 (2019)



RHB03 (2020)



RHB03 (2021)



RHB03 (2022)



RHB03 (2023)



Rehabilitation – Photo Locations

RHB04 (2018)



RHB04 (2019)



RHB04 (2020)



RHB04 (2021)



RHB04 (2022)



RHB04 (2023)



Rehabilitation – Photo Locations

RHB05 (2017)



RHB05 (2018)



RHB05 (2019)



Rehabilitation – Photo Locations

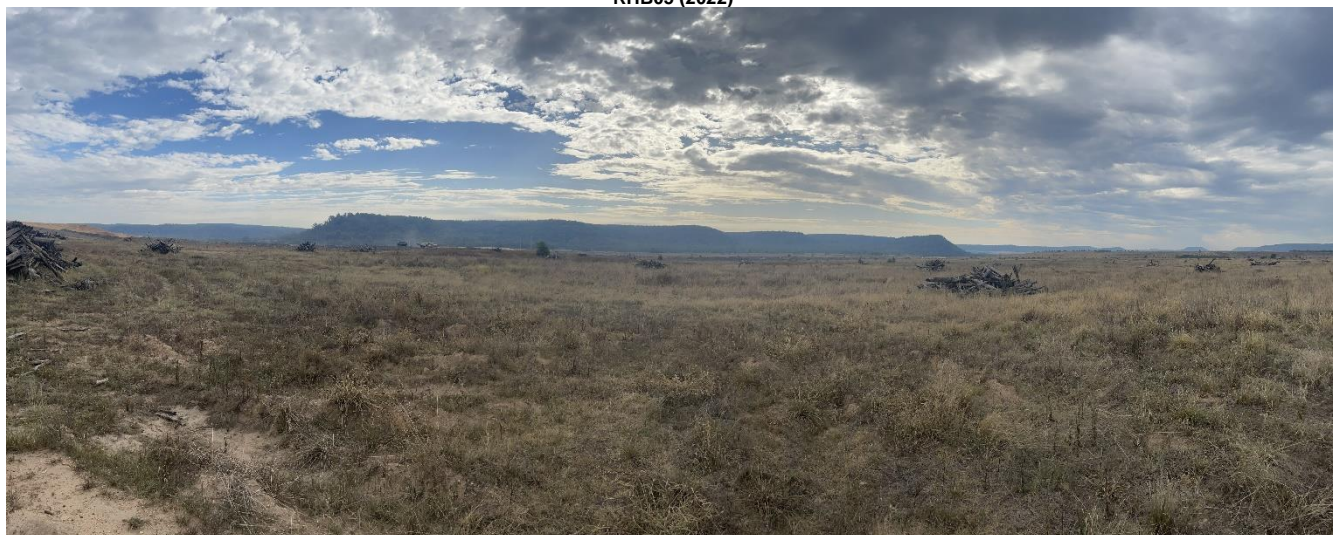
RHB05 (2020)



RHB05 (2021)



RHB05 (2022)



RBH05 (2023)



Rehabilitation – Photo Locations

RHB06 (2017)



RHB06 (2019)



RHB06 (2020)



RHB06 (2021)



RHB06 (2022)

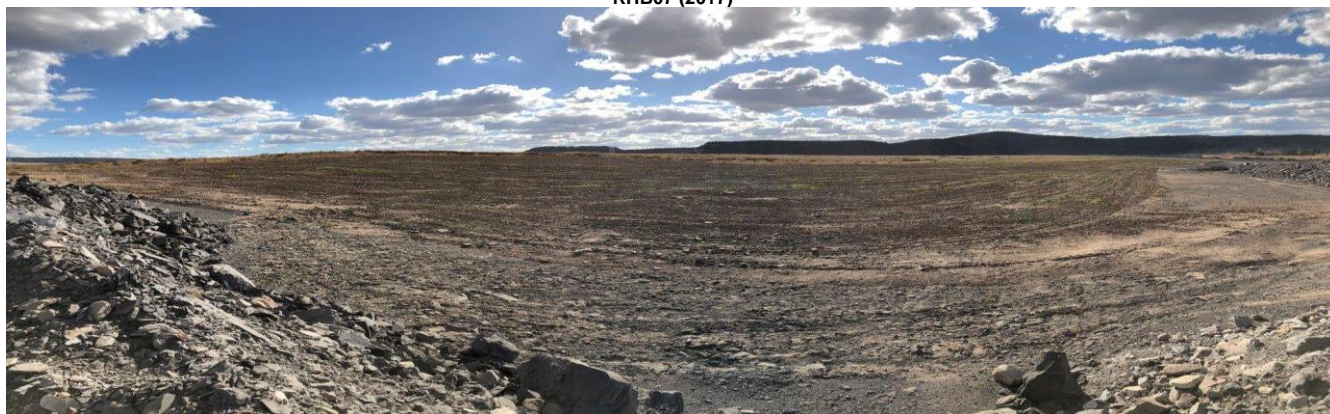


RBH06 (2023)



Rehabilitation – Photo Locations

RHB07 (2017)



RHB07 (2019)



RHB07 (2020)



RHB07 (2021)



Rehabilitation – Photo Locations

RHB07 (2022)



RBH07 (2023)



Rehabilitation – Photo Locations

RHB08 (2017)



RHB08 (2019)



RHB08 (2020)



RHB08 (2021)



Rehabilitation – Photo Locations

RHB09 (2017)



RHB09 (2019)



RHB09 (2020)



RHB09 (2021)



RHB09 (2022)



Rehabilitation – Photo Locations

RHB10 (2017)



RHB10 (2019)



RHB10 (2020)



RHB10 (2021)



RHB10 (2022)



RHB10 (2023)



Table 4B Rehabilitation Photographic Register (BVTs)

Rehabilitation – Photo Locations

BVT 1 (2021)



BVT 1 (2022)



BVT 1 (2023)

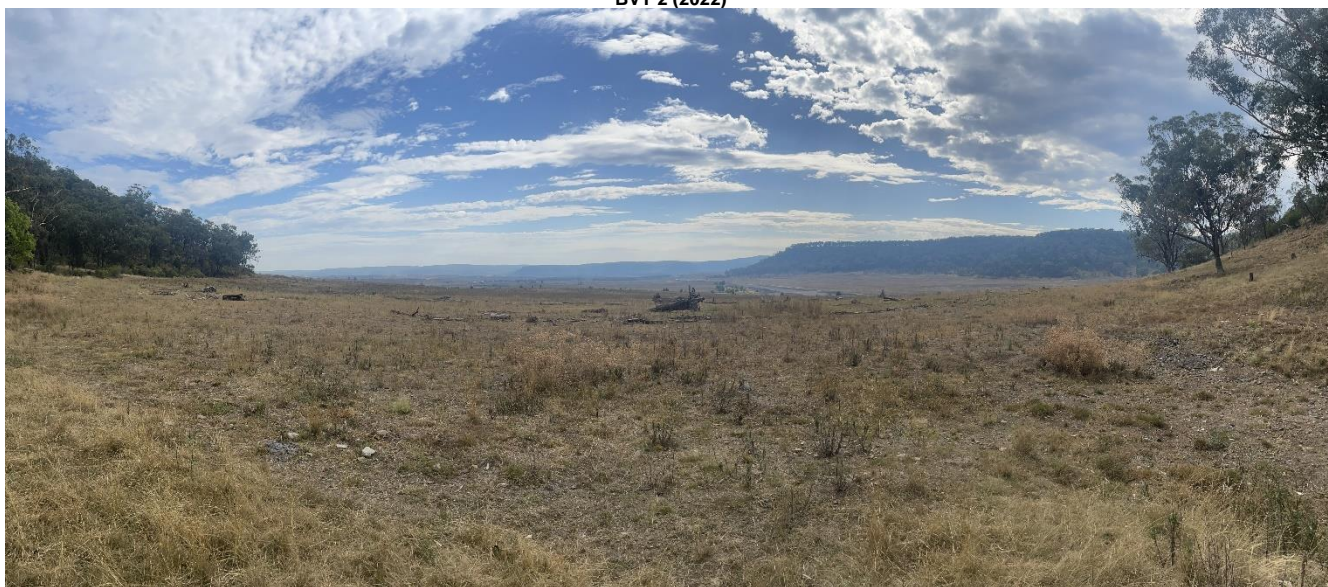


Rehabilitation – Photo Locations

BVT 2 (2021)



BVT 2 (2022)



BVT 2 (2023)



Rehabilitation – Photo Locations

BVT 3 (2021)



BVT 3 (2022)



BVT 3 (2023)



Rehabilitation – Photo Locations

BVT 4 (2021)



BVT 4 (2022)



BVT 4 (2023)



Rehabilitation – Photo Locations

BVT 5 (2021)



BVT 5 (2022)



BVT 5 (2023)



Rehabilitation – Photo Locations

BVT 6 (2021)



BVT 6 (2022)



Rehabilitation – Photo Locations

BVT 7 (New Monitoring Point in 2023)



Rehabilitation – Photo Locations

BVT 8 (New Monitoring Point in 2023)



Rehabilitation – Photo Locations

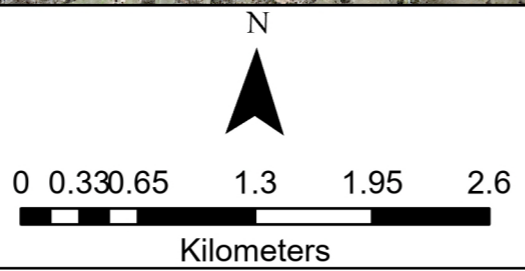
BVT 9 (New Monitoring Point in 2023)





Legend

- Project Approval Boundary SSD6764
- Current Authorisations
- Forecast Data - Year 1**
- Forecast Land Prepared for Rehabilitation
- Forecast Disturbance



**Wilpinjong Coal Mine
Plan 2A Mining and Rehabilitation
Year 1 (2024)**



SpatiaReference Name:GDA1994MGAZone55	Review ID: 1	DateExported: 16/01/2024 9:34AM	Drawn: JH	NSW RR Portal Submission ID Number #6930	Peabody makes every effort to ensure the quality of the information available on this map. Before relying on the information on this map, users should carefully evaluate its accuracy, currency, completeness and relevance for their purposes, and should obtain any appropriate professional advice relevant to their circumstances. Peabody cannot guarantee and assumes no responsibility for the accuracy, currency or completeness of the information and by using this map you accept that Peabody has no liability for any loss or damage in any form whatsoever caused directly or indirectly from the use of this map.
--	-----------------	---------------------------------------	--------------	--	--