

Metropolitan Mine



QUICK FACTS



MINE TYPE
Underground



LOCATION
Helensburgh, NSW



COAL TYPE
Metallurgical



MINING METHOD
Longwall

DID YOU KNOW?



One of the oldest continually operating coal mining operations in Australia, the Metropolitan Coal has been an integral part of the Helensburgh community for 129 years and is a major contributor to the ongoing stability and prospects of the region.



In 2016, Peabody entered into an agreement with South32 Limited to sell the Metropolitan Mine as part of its actions to strengthen the Australian portfolio.

MORE INFO

2.0

Million

Tons of coal sold from the Metropolitan Mine in 2016

35%

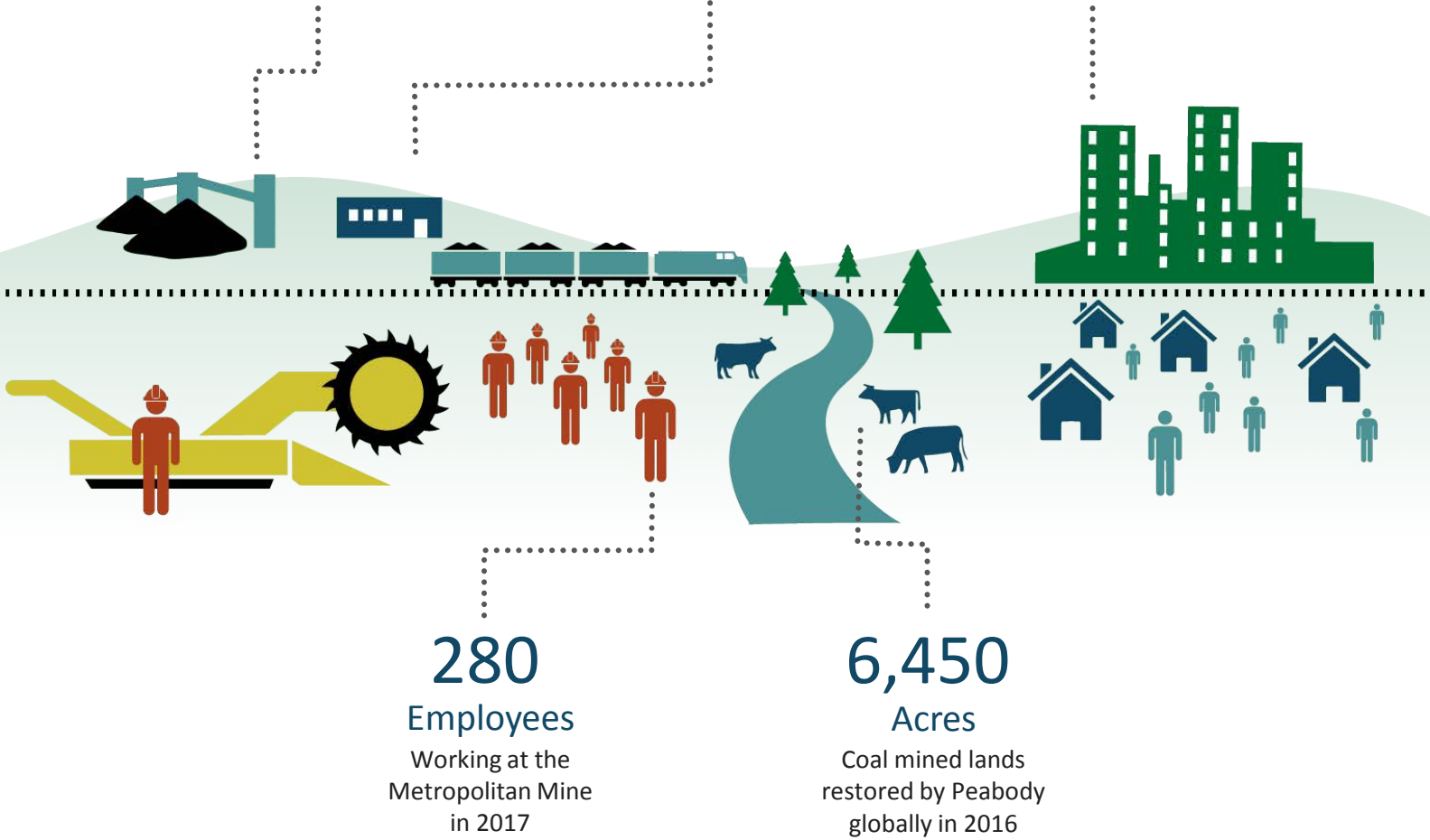
Improvement

In Peabody's global safety rate since 2012

\$340

Million

Direct and indirect economic benefits from the mine in 2016



280

Employees

Working at the Metropolitan Mine in 2017

6,450

Acres

Coal mined lands restored by Peabody globally in 2016

The term "ton" refers to short or net tons, equal to 2,000 pounds (907.18 kilograms), while "tonne" refers to metric tons, equal to 2,204.62 pounds (1,000 kilograms).

Peabody is the world's largest private-sector coal company. The company is also a leading voice in advocating for sustainable mining, energy access and clean coal technologies. The company serves metallurgical and thermal coal customers in more than 25 countries on five continents.