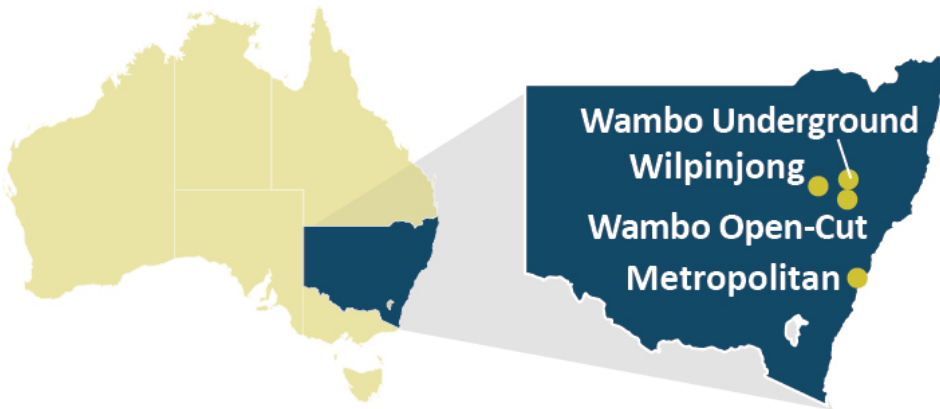


New South Wales Mining



LOCATIONS



MINES

- Metropolitan Mine
- Wambo Open-Cut Mine
- Wambo Underground Mine
- Wilpinjong Mine

DID YOU KNOW?



New South Wales' mines extend from the Hunter Valley coalfields west of Newcastle to the southern coalfields north of Wollongong.



Peabody is the fifth-largest coal producer in Australia. The Australian platform benefits from proximity to higher-growth Asian demand centers.



Peabody has a deep respect for cultural heritage and works closely with local Aboriginal communities at all of its Australian mines to protect and restore lands.

MORE INFO

20.9
Million

Tons of coal sold from
New South Wales
operations in 2019

8th
Successive Year

With a global safety
incidence rate
below 2.00

\$2.3
Billion

Direct and indirect economic
benefits from New South
Wales operations in 2019



1,460
Employees

Working at
operations in the
New South Wales
Region in 2020

2,984
Acres

Coal mined lands
restored by Peabody
globally in 2019

The term "ton" refers to short or net tons, equal to 2,000 pounds (907.18 kilograms), while "tonne" refers to metric tons, equal to 2,204.62 pounds (1,000 kilograms).

Peabody is the leading global pure-play coal company and a member of the Fortune 500, serving power and steel customers in more than 25 countries on six continents. The company offers significant scale, high-quality assets, and diversity in geography and products. Peabody is guided by seven core values: safety, customer focus, leadership, people, excellence, integrity and sustainability.