

Introduction

The *Protection of the Environment Operations Act 1997* (POEO Act) requires that holders of an environment protection licence make their pollution monitoring data publicly available in a timely manner.

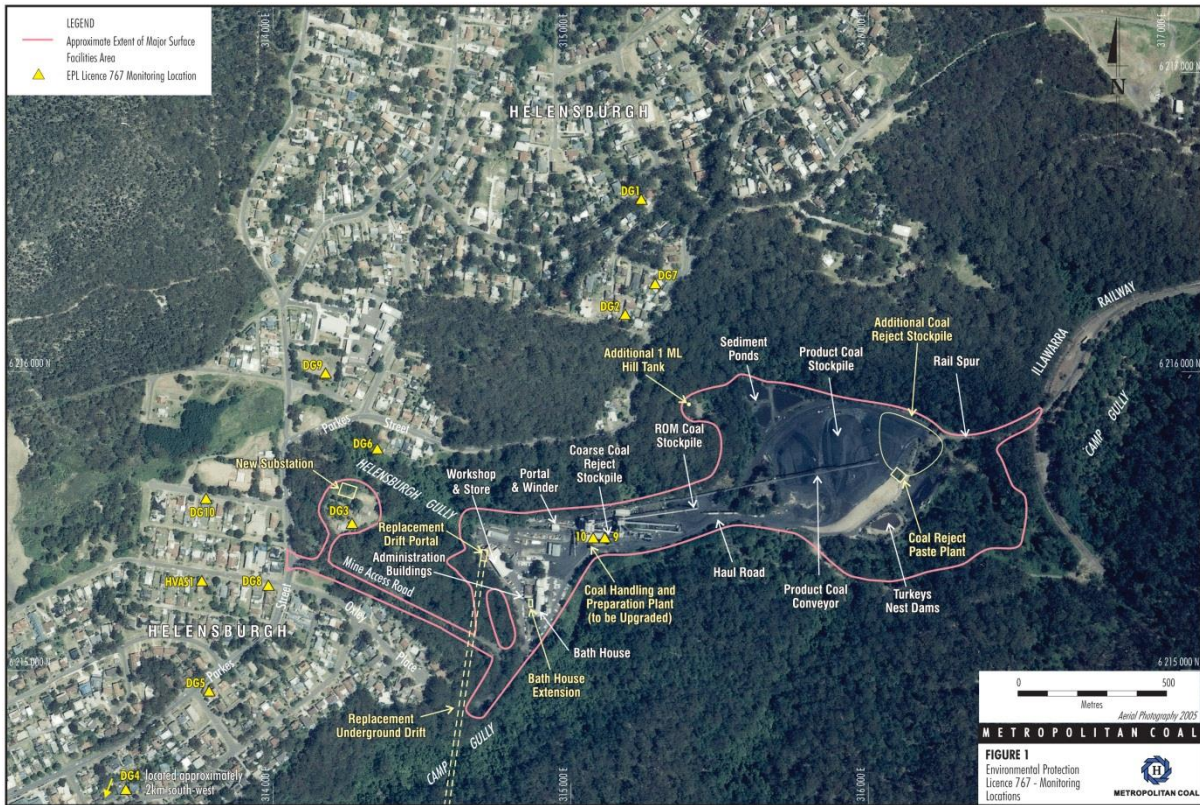
Metropolitan Coal is holder of Environmental Protection Licence 767 (EPL 767). This licence pertains to ‘Mining for Coal’ and ‘Coal Works’. EPL 767 identifies a number of monitoring points as shown in **Table 1 and Figure 1**.

Table 1 – EPL 767 Monitoring Points and Parameters

| Monitoring Point Number | Name | Parameter |
|-------------------------|---|---|
| 1 | Dust Gauge at 136 The Crescent | Ash / Combustible Solids / Insoluble Solids |
| 2 | Dust Gauge at 28 Old Station Road | Ash / Combustible Solids / Insoluble Solids |
| 3 | Dust Gauge at The Mine Entrance | Ash / Combustible Solids / Insoluble Solids |
| 4 | Dust Gauge at Helensburgh Golf Course | Ash / Combustible Solids / Insoluble Solids |
| 5 | Dust Gauge at 83 Parkes Street | Ash / Combustible Solids / Insoluble Solids |
| 9* | Clean Water Tank at Water Treatment Plant | Oil and Grease / pH / TSS |
| 10 | Flowmeter on from Water Treatment Plant to Camp | Kilolitres Per Day |
| 11 | Dust Gauge at 59 Parkes Street | Ash / Combustible Solids / Insoluble Solids |
| 12 | Dust Gauge at 32 Old Station Road | Ash / Combustible Solids / Insoluble Solids |
| 13 | Dust Gauge at 88 Parkes Street | Ash / Combustible Solids / Insoluble Solids |
| 14 | Dust Gauge at Helensburgh Public School | Ash / Combustible Solids / Insoluble Solids |
| 15 | Dust Gauge at Holy Cross Primary School | Ash / Combustible Solids / Insoluble Solids |
| 16 | High Volume Air Sampler at 12 Robertson Street | Micrograms Per Cubic Metre |

**Note: The monitoring at Point 9 required by condition M2 is conducted by the licensee to determine compliance with the limits specified for Points 6 & 7 in condition L3.3.*

Figure 1 – EPL 767 Monitoring Point Locations



This environmental monitoring summary is provided in accordance with the requirements of the POEA Act. It is distinct to the environmental monitoring summary which is provided in accordance with the requirements of Project Approval 08_0149 which was granted under Section 75J of the NSW Environmental Planning and Assessment Act, 1979 on 22 June 2009.

Monitoring Summary

| Monitoring Point 1 – Dust Gauge at 136 The Crescent | | | |
|---|--|-------------------------------|--|
| Month | Insoluble Solids (g/m ² /month) | Ash (g/m ² /month) | Combustible Solids (g/m ² /month) |
| Jan-19 | 0.7 | 0.4 | 0.3 |
| Feb-19 | 2.5 | 1.1 | 1.4 |
| Mar-19 | 1.7 | 1.0 | 0.7 |
| Apr-19 | 0.8 | 0.4 | 0.4 |
| May-19 | 0.3 | 0.1 | 0.2 |
| Jun-19 | 0.9 | 0.5 | 0.4 |
| Jul-19 | 0.1 | 0.1 | <0.1 |
| Aug-19 | 0.1 | 0.1 | <0.1 |
| Sep-19 | | | |
| Oct-19 | | | |
| Nov-19 | | | |
| Dec-19 | | | |

| Monitoring Point 2 – Dust Gauge at 28 Old Station Road | | | |
|---|---|------------------------------------|---|
| Month | Insoluble Solids (g/m²/month) | Ash (g/m²/month) | Combustible Solids (g/m²/month) |
| Jan-19 | 0.8 | 0.4 | 0.4 |
| Feb-19 | 1.2 | 0.5 | 0.7 |
| Mar-19 | 0.7 | 0.4 | 0.3 |
| Apr-19 | 1.1 | 0.5 | 0.6 |
| May-19 | 0.4 | 0.2 | 0.2 |
| Jun-19 | 0.8 | 0.4 | 0.4 |
| Jul-19 | 0.1 | 0.1 | <0.1 |
| Aug-19 | 0.3 | 0.2 | 0.1 |
| Sep-19 | | | |
| Oct-19 | | | |
| Nov-19 | | | |
| Dec-19 | | | |

| Monitoring Point 3 – Dust Gauge at Mine Entrance | | | |
|---|---|------------------------------------|---|
| Month | Insoluble Solids (g/m²/month) | Ash (g/m²/month) | Combustible Solids (g/m²/month) |
| Jan-19 | 1.9 | 0.7 | 1.2 |
| Feb-19 | 1.1 | 0.2 | 0.9 |
| Mar-19 | 0.3 | 0.1 | 0.2 |
| Apr-19 | 5.0 | 1.0 | 4.0 |
| May-19 | 0.4 | 0.1 | 0.3 |
| Jun-19 | 16.8* | 2.0* | 14.8* |
| Jul-19 | 4.6* | 0.9* | 3.7* |
| Aug-19 | 10.5* | 3.8* | 6.7* |
| Sep-19 | | | |
| Oct-19 | | | |
| Nov-19 | | | |
| Dec-19 | | | |

**Note: Lab observed significant leaf litter in sample*

| Monitoring Point 4 – Dust Gauge at Helensburgh Golf Course | | | |
|---|---|------------------------------------|---|
| Month | Insoluble Solids (g/m²/month) | Ash (g/m²/month) | Combustible Solids (g/m²/month) |
| Jan-19 | 1.3 | 0.9 | 0.4 |
| Feb-19 | 1.6 | 1.2 | 0.4 |
| Mar-19 | 0.9 | 0.6 | 0.3 |
| Apr-19 | 1.0 | 0.6 | 0.4 |
| May-19 | 0.4 | 0.3 | 0.1 |
| Jun-19 | 1.2 | 0.8 | 0.4 |
| Jul-19 | 0.2 | 0.1 | 0.1 |
| Aug-19 | 0.4 | 0.3 | 0.1 |
| Sep-19 | | | |
| Oct-19 | | | |
| Nov-19 | | | |
| Dec-19 | | | |

| Monitoring Point 5 – Dust Gauge at 83 Parkes Street | | | |
|--|---|------------------------------------|---|
| Month | Insoluble Solids (g/m²/month) | Ash (g/m²/month) | Combustible Solids (g/m²/month) |
| Jan-19 | 2.3 | 1.4 | 0.9 |
| Feb-19 | 1.1 | 0.8 | 0.3 |
| Mar-19 | 0.9 | 0.5 | 0.4 |
| Apr-19 | 0.5 | 0.2 | 0.3 |
| May-19 | 0.3 | 0.1 | 0.2 |
| Jun-19 | 0.6 | 0.3 | 0.3 |
| Jul-19 | 0.1 | 0.1 | <0.1 |
| Aug-19 | 0.2 | 0.1 | 0.1 |
| Sep-19 | | | |
| Oct-19 | | | |
| Nov-19 | | | |
| Dec-19 | | | |

| Monitoring Point 11 – Dust Gauge at 59 Parkes Street | | | |
|---|---|------------------------------------|---|
| Month | Insoluble Solids (g/m²/month) | Ash (g/m²/month) | Combustible Solids (g/m²/month) |
| Jan-19 | 1.2 | 0.6 | 0.6 |
| Feb-19 | 1.1 | 0.6 | 0.5 |
| Mar-19 | 0.6 | 0.4 | 0.2 |
| Apr-19 | 0.5 | 0.2 | 0.3 |
| May-19 | 0.3 | 0.1 | 0.2 |
| Jun-19 | 0.5 | 0.2 | 0.3 |
| Jul-19 | 0.2 | 0.1 | 0.1 |
| Aug-19 | 0.3 | 0.1 | 0.2 |
| Sep-19 | | | |
| Oct-19 | | | |
| Nov-19 | | | |
| Dec-19 | | | |

| Monitoring Point 12 – Dust Gauge at 32 Old Station Road | | | |
|--|---|------------------------------------|---|
| Month | Insoluble Solids (g/m²/month) | Ash (g/m²/month) | Combustible Solids (g/m²/month) |
| Jan-19 | 2.0 | 0.9 | 1.1 |
| Feb-19 | 2.8 | 1.0 | 1.8 |
| Mar-19 | 1.4 | 0.8 | 0.6 |
| Apr-19 | 0.6 | 0.2 | 0.4 |
| May-19 | 0.5 | 0.2 | 0.3 |
| Jun-19 | 0.8 | 0.2 | 0.6 |
| Jul-19 | 0.3 | 0.1 | 0.2 |
| Aug-19 | 0.4 | 0.2 | 0.2 |
| Sep-19 | | | |
| Oct-19 | | | |
| Nov-19 | | | |
| Dec-19 | | | |

| Monitoring Point 13 – Dust Gauge at 88 Parkes Street | | | |
|---|---|------------------------------------|---|
| Month | Insoluble Solids (g/m²/month) | Ash (g/m²/month) | Combustible Solids (g/m²/month) |
| Jan-19 | 1.9 | 1.1 | 0.8 |
| Feb-19 | 2.5 | 1.7 | 0.8 |
| Mar-19 | 2.0 | 1.2 | 0.8 |
| Apr-19 | 1.9 | 1.1 | 0.8 |
| May-19 | 0.7 | 0.3 | 0.4 |
| Jun-19 | 1.0 | 0.6 | 0.4 |
| Jul-19 | 0.5 | 0.3 | 0.2 |
| Aug-19 | 0.5 | 0.3 | 0.2 |
| Sep-19 | | | |
| Oct-19 | | | |
| Nov-19 | | | |
| Dec-19 | | | |

| Monitoring Point 14 – Dust Gauge at Helensburgh Public School | | | |
|--|---|------------------------------------|---|
| Month | Insoluble Solids (g/m²/month) | Ash (g/m²/month) | Combustible Solids (g/m²/month) |
| Jan-19 | 3.0 | 1.2 | 1.8 |
| Feb-19 | 1.9 | 0.6 | 1.3 |
| Mar-19 | 2.5 | 1.1 | 1.4 |
| Apr-19 | 1.5 | 0.5 | 1.0 |
| May-19 | 0.6 | 0.1 | 0.5 |
| Jun-19 | 1.3 | 0.6 | 0.7 |
| Jul-19 | 0.7 | 0.3 | 0.4 |
| Aug-19 | 1.2 | 0.6 | 0.6 |
| Sep-19 | | | |
| Oct-19 | | | |
| Nov-19 | | | |
| Dec-19 | | | |

| Monitoring Point 15 – Dust Gauge at Holy Cross Primary School | | | |
|--|---|------------------------------------|---|
| Month | Insoluble Solids (g/m²/month) | Ash (g/m²/month) | Combustible Solids (g/m²/month) |
| Jan-19 | 1.7 | 0.8 | 0.9 |
| Feb-19 | 2.0 | 1.3 | 0.7 |
| Mar-19 | 1.0 | 0.6 | 0.4 |
| Apr-19 | 0.6 | 0.2 | 0.4 |
| May-19 | 0.4 | 0.1 | 0.3 |
| Jun-19 | 0.8 | 0.4 | 0.4 |
| Jul-19 | 0.1 | <0.1 | 0.1 |
| Aug-19 | 0.2 | 0.1 | 0.1 |
| Sep-19 | | | |
| Oct-19 | | | |
| Nov-19 | | | |
| Dec-19 | | | |

METROPOLITAN COAL – ENVIRONMENTAL PROTECTION LICENCE MONITORING SUMMARY

| Monitoring Point 16 – High Volume Air Sampler at 12 Robertson Street | | | |
|---|------------------------------------|-------------|------------------------------------|
| Date | PM10 (µg/m³) | Date | PM10 (µg/m³) |
| 02/01/2019 | 9.3 | 07/07/2019 | 2.9 |
| 08/01/2019 | 18.4 | 13/07/2019 | 4.6 |
| 14/01/2019 | 16.5 | 19/07/2019 | 6.8 |
| 20/01/2019 | 17.1 | 25/07/2019 | 10.7 |
| 26/01/2019 | 34.7 | 31/07/2019 | 7.0 |
| 01/02/2019 | 4.8 | 06/08/2019 | 14.2 |
| 07/02/2019 | 2.4 | 12/08/2019 | 6.5 |
| 13/02/2019 | 10.0 | 18/08/2019 | 15.7 |
| 19/02/2019 | 14.4 | 24/08/2019 | 17.0 |
| 25/02/2019 | 6.1 | 30/08/2019 | 7.8 |
| 03/03/2019 | 6.9 | | |
| 09/03/2019 | 20.1 | | |
| 15/03/2019 | 11.6 | | |
| 21/03/2019 | 4.4 | | |
| 27/03/2019 | 14.1 | | |
| 02/04/2019 | 9.6 | | |
| 08/04/2019 | 21.4 | | |
| 14/04/2019 | 17.4 | | |
| 20/04/2019 | 11.8 | | |
| 26/04/2019 | 1.6 | | |
| 02/05/2019 | 40.6 | | |
| 08/05/2019 | 8.5 | | |
| 14/05/2019 | 11.3 | | |
| 20/05/2019 | 30.7 | | |
| 26/05/2019 | 10.4 | | |
| 01/06/2019 | 10.8 | | |
| 07/06/2019 | 14.7 | | |
| 13/06/2019 | 5.8 | | |
| 19/06/2019 | 7.4 | | |
| 25/06/2019 | 6.1 | | |
| 01/07/2019 | 8.9 | | |

METROPOLITAN COAL – ENVIRONMENTAL PROTECTION LICENCE MONITORING SUMMARY

| Point 9* – The Clean Water Tank of the Water Treatment Plant | | | | |
|---|--------------------------------|-----------------------------|-----------------------------|-------------------------|
| Month | Oil & Grease (mg/L) | pH | TSS (mg/L) | Exceedance (Y/N) |
| Jan-19 | Invalid Sample [#] | Invalid Sample [#] | Invalid Sample [#] | N/A |
| Feb-19 | <5 | 8.35 | 12.0 | N |
| Mar-19 | Invalid Sample [#] | Invalid Sample [#] | Invalid Sample [#] | N/A |
| Apr-19 | Invalid Sample [#] | Invalid Sample [#] | Invalid Sample [#] | N/A |
| May-19 | Invalid Sample [#] | Invalid Sample [#] | Invalid Sample [#] | N/A |
| Jun-19 | Invalid Sample [#] | Invalid Sample [#] | Invalid Sample [#] | N/A |
| Jul-19 | Invalid Sample [#] | Invalid Sample [#] | Invalid Sample [#] | N/A |
| Aug-19 | Invalid Sample [#] | Invalid Sample [#] | Invalid Sample [#] | N/A |
| Sep-19 | | | | |
| Oct-19 | | | | |
| Nov-19 | | | | |
| Dec-19 | | | | |
| Licence Limit | 10mg/L | 6.5-8.5 | 30 mg/L | |

*Note: The monitoring at Point 9 required by condition M2 is conducted by the licensee to determine compliance with the limits specified for Points 6 & 7 in condition L3.3.

[#]Note: No water discharged to Camp Creek at time of sampling

| Point 10 – The Flowmeter on the Clean Water Discharge Tank at the Water Treatment Plant | |
|--|----------------------------|
| Month | Volume (kL Per Day) |
| Jan-19 | 87 |
| Feb-19 | 104 |
| Mar-19 | 162 |
| Apr-19 | 171 |
| May-19 | 132 |
| Jun-19 | 282 |
| Jul-19 | 212 |
| Aug-19 | 164 |
| Sep-19 | |
| Oct-19 | |
| Nov-19 | |
| Dec-19 | |