

Introduction

The *Protection of the Environment Operations Act 1997* (POEO Act) requires that holders of an environment protection licence make their pollution monitoring data publicly available in a timely manner.

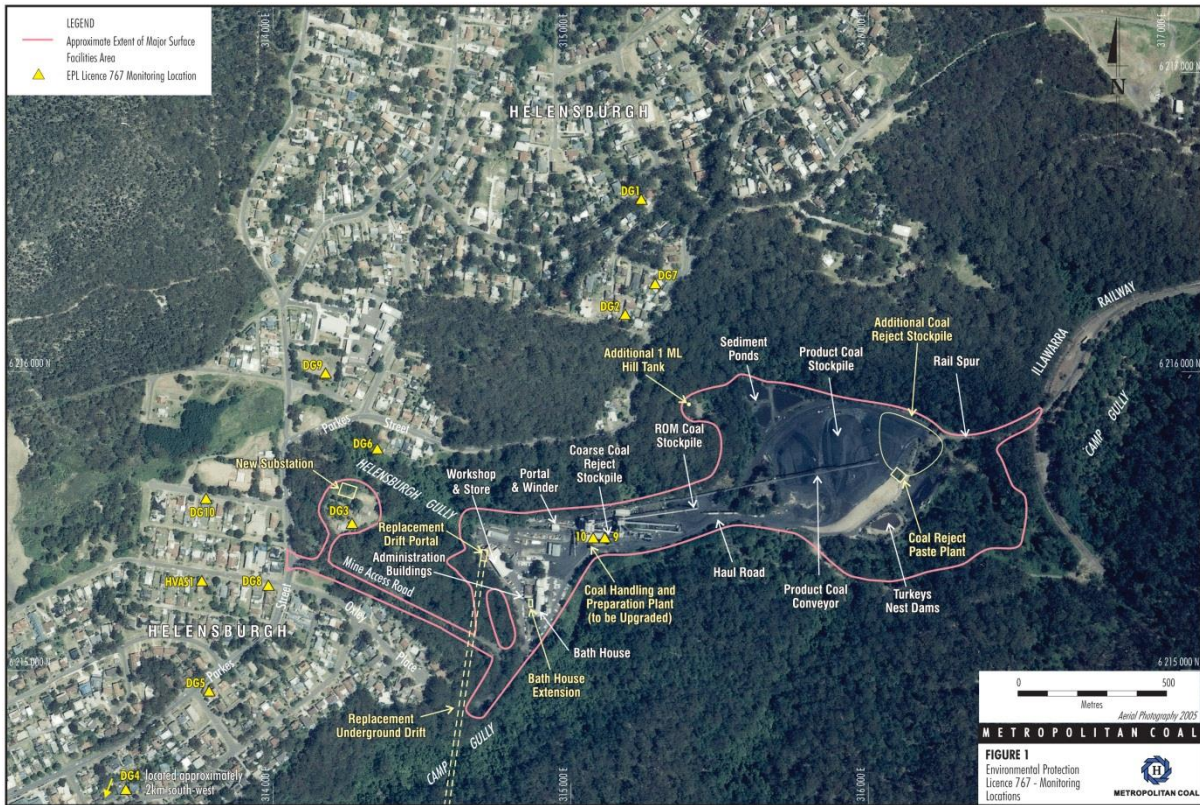
Metropolitan Coal is holder of Environmental Protection Licence 767 (EPL 767). This licence pertains to ‘Mining for Coal’ and ‘Coal Works’. EPL 767 identifies a number of monitoring points as shown in **Table 1 and Figure 1**.

Table 1 – EPL 767 Monitoring Points and Parameters

Monitoring Point Number	Name	Parameter
1	Dust Gauge at 136 The Crescent	Ash / Combustible Solids / Insoluble Solids
2	Dust Gauge at 28 Old Station Road	Ash / Combustible Solids / Insoluble Solids
3	Dust Gauge at The Mine Entrance	Ash / Combustible Solids / Insoluble Solids
4	Dust Gauge at Helensburgh Golf Course	Ash / Combustible Solids / Insoluble Solids
5	Dust Gauge at 83 Parkes Street	Ash / Combustible Solids / Insoluble Solids
9*	Clean Water Tank at Water Treatment Plant	Oil and Grease / pH / TSS
10	Flowmeter on from Water Treatment Plant to Camp Creek	Kilolitres Per Day
11	Dust Gauge at 59 Parkes Street	Ash / Combustible Solids / Insoluble Solids
12	Dust Gauge at 32 Old Station Road	Ash / Combustible Solids / Insoluble Solids
13	Dust Gauge at 88 Parkes Street	Ash / Combustible Solids / Insoluble Solids
14	Dust Gauge at Helensburgh Public School	Ash / Combustible Solids / Insoluble Solids
15	Dust Gauge at Holy Cross Primary School	Ash / Combustible Solids / Insoluble Solids
16	High Volume Air Sampler at 12 Robertson Street	Micrograms Per Cubic Metre

**Note: The monitoring at Point 9 required by condition M2 is conducted by the licensee to determine compliance with the limits specified for Points 6 & 7 in condition L3.3.*

Figure 1 – EPL 767 Monitoring Point Locations



This environmental monitoring summary is provided in accordance with the requirements of the POEA Act. It is distinct to the environmental monitoring summary which is provided in accordance with the requirements of Project Approval 08_0149 which was granted under Section 75J of the NSW Environmental Planning and Assessment Act, 1979 on 22 June 2009.

Monitoring Summary

Monitoring Point 1 – Dust Gauge at 136 The Crescent			
Month	Insoluble Solids (g/m ² /month)	Ash (g/m ² /month)	Combustible Solids (g/m ² /month)
Jan-17	1.0	0.4	0.6
Feb-17	1.3	0.4	0.9
Mar-17	0.7	0.2	0.5
Apr-17	0.7	0.3	0.4
May-17	0.5	0.2	0.3
Jun-17	0.8	0.3	0.5
Jul-17	0.2	0.1	0.1
Aug-17	0.7	0.3	0.4
Sep-17	0.3	0.2	0.1
Oct-17	0.6	0.3	0.3
Nov-17	0.6	0.3	0.3
Dec-17	0.8	0.4	0.4

Monitoring Point 2 – Dust Gauge at 28 Old Station Road			
Month	Insoluble Solids (g/m²/month)	Ash (g/m²/month)	Combustible Solids (g/m²/month)
Jan-17	0.5	0.3	0.2
Feb-17	0.9	0.3	0.6
Mar-17	0.5	0.2	0.3
Apr-17	0.5	0.2	0.3
May-17	0.2	0.1	0.1
Jun-17	0.3	0.1	0.2
Jul-17	0.1	0.1	0.0
Aug-17	0.4	0.1	0.3
Sep-17	0.3	0.1	0.2
Oct-17	0.6	0.3	0.3
Nov-17	0.8	0.3	0.5
Dec-17	0.6	0.3	0.3

Monitoring Point 3 – Dust Gauge at Mine Entrance			
Month	Insoluble Solids (g/m²/month)	Ash (g/m²/month)	Combustible Solids (g/m²/month)
Jan-17	2.2	0.9	1.3
Feb-17	1.4	0.7	0.7
Mar-17	0.5	0.4	0.1
Apr-17	2.0	0.9	1.1
May-17	1.5	0.9	0.6
Jun-17	1.9	1.0	0.9
Jul-17	0.3	0.2	0.1
Aug-17	0.8	0.5	0.3
Sep-17	2.1	1.0	1.1
Oct-17	1.6	0.7	0.9
Nov-17	2.1	1.5	0.6
Dec-17	1.0	0.6	0.4

Monitoring Point 4 – Dust Gauge at Helensburgh Golf Course			
Month	Insoluble Solids (g/m²/month)	Ash (g/m²/month)	Combustible Solids (g/m²/month)
Jan-17	0.9	0.6	0.3
Feb-17	1.5	0.9	0.6
Mar-17	0.9	0.4	0.5
Apr-17	0.7	0.4	0.3
May-17	0.9	0.7	0.2
Jun-17	0.8	0.5	0.3
Jul-17	1.1	0.7	0.4
Aug-17	1.0	0.9	0.1
Sep-17	1.7	1.1	0.6
Oct-17	0.9	0.6	0.3
Nov-17	1.1	0.9	0.2
Dec-17	0.8	0.7	0.1

Monitoring Point 5 – Dust Gauge at 83 Parkes Street			
Month	Insoluble Solids (g/m²/month)	Ash (g/m²/month)	Combustible Solids (g/m²/month)
Jan-17	0.7	0.6	0.1
Feb-17	0.9	0.7	0.2
Mar-17	1.2	0.6	0.6
Apr-17	0.6	0.3	0.3
May-17	0.4	0.3	0.1
Jun-17	0.5	0.2	0.3
Jul-17	0.3	0.1	0.2
Aug-17	0.7	0.5	0.2
Sep-17	0.6	0.3	0.3
Oct-17	1.0	0.6	0.4
Nov-17	0.8	0.5	0.3
Dec-17	1.0	0.5	0.5

METROPOLITAN COAL – ENVIRONMENTAL PROTECTION LICENCE MONITORING SUMMARY

Monitoring Point 11 – Dust Gauge at 59 Parkes Street			
Month	Insoluble Solids (g/m²/month)	Ash (g/m²/month)	Combustible Solids (g/m²/month)
Jan-17	0.5	0.3	0.2
Feb-17	0.5	0.3	0.2
Mar-17	1.0	0.1	0.9
Apr-17	0.5	0.2	0.3
May-17	0.1	0.1	0.1
Jun-17	0.5	0.1	0.4
Jul-17	0.3	0.1	0.2
Aug-17	0.5	0.2	0.3
Sep-17	0.6	0.2	0.4
Oct-17	0.8	0.5	0.3
Nov-17	0.6	0.3	0.3
Dec-17	0.8	0.2	0.6

Monitoring Point 12 – Dust Gauge at 32 Old Station Road			
Month	Insoluble Solids (g/m²/month)	Ash (g/m²/month)	Combustible Solids (g/m²/month)
Jan-17	0.3	0.2	0.1
Feb-17	0.3	0.2	0.1
Mar-17	2.1	0.3	1.8
Apr-17	0.7	0.2	0.5
May-17	0.4	0.1	0.3
Jun-17	0.4	0.1	0.3
Jul-17	0.4	0.1	0.3
Aug-17	0.4	0.2	0.2
Sep-17	0.6	0.2	0.4
Oct-17	0.8	0.3	0.5
Nov-17	0.9	0.3	0.6
Dec-17	1.2	0.3	0.9

Monitoring Point 13 – Dust Gauge at 88 Parkes Street			
Month	Insoluble Solids (g/m²/month)	Ash (g/m²/month)	Combustible Solids (g/m²/month)
Jan-17	1.4	1.0	0.4
Feb-17	1.6	0.9	0.7
Mar-17	1.4	0.7	0.7
Apr-17	0.9	0.7	0.2
May-17	1.5	1.0	0.5
Jun-17	0.8	0.5	0.3
Jul-17	0.6	0.3	0.3
Aug-17	0.7	0.5	0.2
Sep-17	0.7	0.3	0.4
Oct-17	1.5	0.9	0.6
Nov-17	1.6	0.9	0.7
Dec-17	2.1	1.2	0.9

Monitoring Point 14 – Dust Gauge at Helensburgh Public School			
Month	Insoluble Solids (g/m²/month)	Ash (g/m²/month)	Combustible Solids (g/m²/month)
Jan-17	1.0	0.5	0.5
Feb-17	2.0	0.9	1.1
Mar-17	1.4	0.3	1.1
Apr-17	0.9	0.6	0.3
May-17	0.9	0.6	0.3
Jun-17	0.5	0.1	0.4
Jul-17	0.2	0.1	0.1
Aug-17	1.0	0.7	0.3
Sep-17	0.7	0.3	0.4
Oct-17	1.1	0.5	0.6
Nov-17	0.9	0.4	0.5
Dec-17	0.1	0.1	<0.1

Monitoring Point 15 – Dust Gauge at Holy Cross Primary School			
Month	Insoluble Solids (g/m²/month)	Ash (g/m²/month)	Combustible Solids (g/m²/month)
Jan-17	0.4	0.4	0.0
Feb-17	0.8	0.4	0.4
Mar-17	0.5	0.2	0.3
Apr-17	0.4	0.2	0.2
May-17	0.3	0.2	0.1
Jun-17	0.4	0.2	0.2
Jul-17	0.3	0.1	0.2
Aug-17	0.8	0.7	0.1
Sep-17	0.9	0.4	0.5
Oct-17	1.3	0.8	0.5
Nov-17	0.8	0.5	0.3
Dec-17	0.9	0.3	0.6

METROPOLITAN COAL – ENVIRONMENTAL PROTECTION LICENCE MONITORING SUMMARY

Monitoring Point 16 – High Volume Air Sampler at 12 Robertson Street			
Date	PM10 ($\mu\text{g}/\text{m}^3$)	Date	PM10 ($\mu\text{g}/\text{m}^3$)
06/01/2017	8.7	05/07/2017	1.9
12/01/2017	16.8	11/07/2017	3.1
18/01/2017	23.3	17/07/2017	7.7
24/01/2017	17.5	23/07/2017	8.2
30/01/2017	17.4	29/07/2017	7.4
05/02/2017	16.6	04/08/2017	4.2
11/02/2017	17.9	10/08/2017	7.3
17/02/2017	23.2	16/08/2017	6.4
23/02/2017	18.6	22/08/2017	9.0
01/03/2017	10.1	28/08/2017	9.2
07/03/2017	13.6	03/09/2017	29.6
13/03/2017	22.1	09/09/2017	9.0
19/03/2017	12.9	15/09/2017	6.7
25/03/2017	14.6	21/09/2017	23.5
31/03/2017	10.7	27/09/2017	33.5
06/04/2017	3.1	03/10/2017	14.2
12/04/2017	4.2	09/10/2017	12.6
18/04/2017	8.4	15/10/2017	12.1
24/04/2017	16.1	21/10/2017	14.6
30/04/2017	8.4	27/10/2017	9.2
06/05/2017	8.1	02/11/2017	13.0
12/05/2017	11.1	08/11/2017	8.2
18/05/2017	9.9	14/11/2017	5.6
24/05/2017	4.6	20/11/2017	7.1
30/05/2017	5.8	26/11/2017	5.0
05/06/2017	7.1	02/12/2017	16.2
11/06/2017	3.2	08/12/2017	17.4
17/06/2017	6.9	14/12/2017	29.1
23/06/2017	10.5	20/12/2017	29.8
29/06/2017	8.2	26/12/2017	12.1

METROPOLITAN COAL – ENVIRONMENTAL PROTECTION LICENCE MONITORING SUMMARY

Point 9* – The Clean Water Tank of the Water Treatment Plant				
Month	Oil & Grease (mg/L)	pH	TSS (mg/L)	Exceedance (Y/N)
Jan-17	Invalid Sample [#]	Invalid Sample [#]	Invalid Sample [#]	N/A
Feb-17	Invalid Sample [#]	Invalid Sample [#]	Invalid Sample [#]	N/A
Mar-17	<5	8.32	<5	N
Apr-17	Invalid Sample [#]	Invalid Sample [#]	Invalid Sample [#]	N/A
May-17	Invalid Sample [#]	Invalid Sample [#]	Invalid Sample [#]	N/A
Jun-17	<5	8.1	12	N
Jul-17	Invalid Sample [#]	Invalid Sample [#]	Invalid Sample [#]	N/A
Aug-17	Invalid Sample [#]	Invalid Sample [#]	Invalid Sample [#]	N/A
Sep-17	Invalid Sample [#]	Invalid Sample [#]	Invalid Sample [#]	N/A
Oct-17	<5	8.4	<5	N
Nov-17	Invalid Sample [#]	Invalid Sample [#]	Invalid Sample [#]	N/A
Dec-17	Invalid Sample [#]	Invalid Sample [#]	Invalid Sample [#]	N/A
Licence Limit	10mg/L	6.5-8.5	30 mg/L	

**Note: The monitoring at Point 9 required by condition M2 is conducted by the licensee to determine compliance with the limits specified for Points 6 & 7 in condition L3.3.*

[#]Note: No water discharged to Camp Creek at time of sampling

Point 10 – The Flowmeter on the Clean Water Discharge Tank at the Water Treatment Plant	
Month	Volume (kL Per Day)
Jan-17	302
Feb-17	329
Mar-17	820
Apr-17	381
May-17	391
Jun-17	549
Jul-17	213
Aug-17	208
Sep-17	157
Oct-17	122
Nov-17	128
Dec-17	125