

**Introduction**

The *Protection of the Environment Operations Act 1997* (POEO Act) requires that holders of an environment protection licence make their pollution monitoring data publicly available within 14 days of receipt. The NSW EPA Public Register can be found at: [www.epa.nsw.gov.au/licensing-and-regulation/public-registers](http://www.epa.nsw.gov.au/licensing-and-regulation/public-registers)

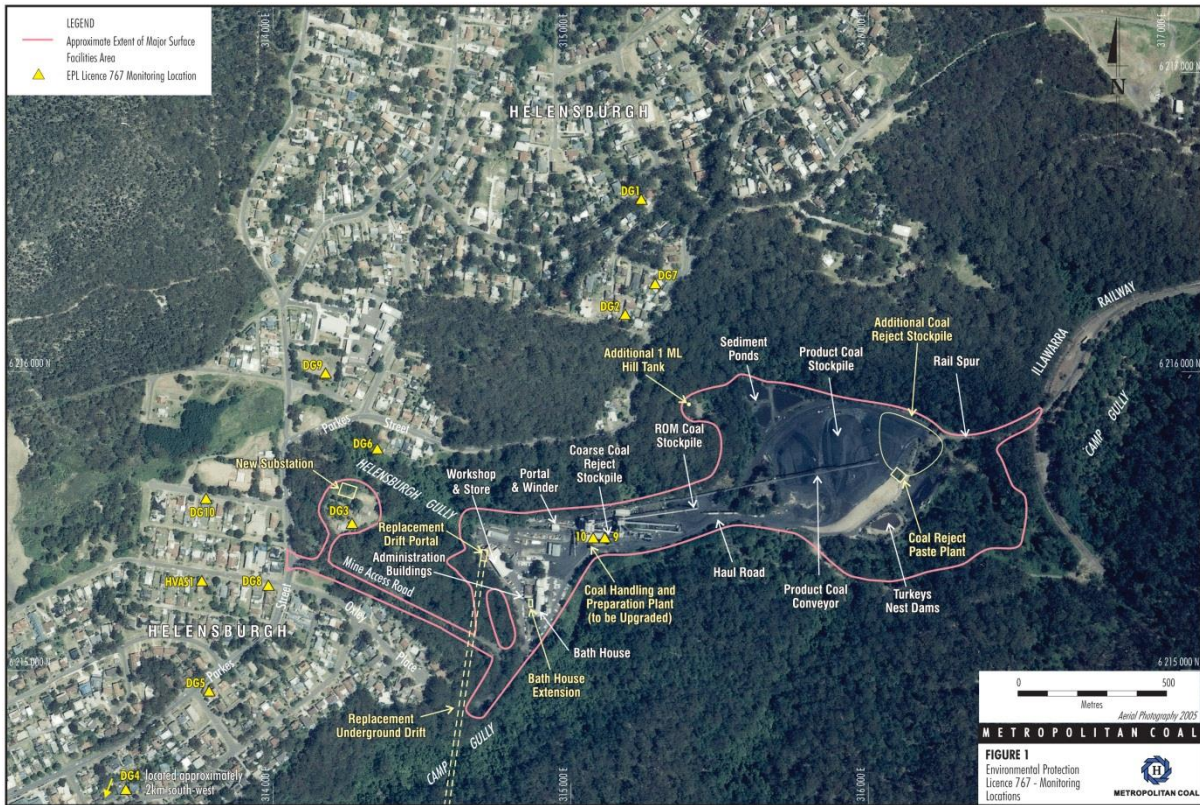
Metropolitan Coal is holder of Environmental Protection Licence 767 (EPL 767). This licence pertains to ‘Mining for Coal’ and ‘Coal Works’. EPL 767 identifies a number of monitoring points as shown in **Table 1 and Figure 1**. Metropolitan Coal is located Off Parkes Street Helensburgh, NSW, 2508.

**Table 1 – EPL 767 Monitoring Points, Parameters and Frequency**

Monitoring Point Number	Name	Parameter	Frequency
1	Dust Gauge at 136 The Crescent	Ash / Combustible Solids / Insoluble Solids	Monthly
2	Dust Gauge at 28 Old Station Road	Ash / Combustible Solids / Insoluble Solids	Monthly
3	Dust Gauge at The Mine Entrance	Ash / Combustible Solids / Insoluble Solids	Monthly
4	Dust Gauge at Helensburgh Golf	Ash / Combustible Solids / Insoluble Solids	Monthly
5	Dust Gauge at 83 Parkes Street	Ash / Combustible Solids / Insoluble Solids	Monthly
9*	Clean Water Tank at Water Treatment	Oil and Grease / pH / TSS	Monthly
10	Flowmeter on from Water Treatment Plant to Camp Creek	Kilolitres Per Day	Daily (continuous)
11	Dust Gauge at 59 Parkes Street	Ash / Combustible Solids / Insoluble Solids	Monthly
12	Dust Gauge at 32 Old Station Road	Ash / Combustible Solids / Insoluble Solids	Monthly
13	Dust Gauge at 88 Parkes Street	Ash / Combustible Solids / Insoluble Solids	Monthly
14	Dust Gauge at Helensburgh Public	Ash / Combustible Solids / Insoluble Solids	Monthly
15	Dust Gauge at Holy Cross Primary School	Ash / Combustible Solids / Insoluble Solids	Monthly
16	High Volume Air Sampler at 12	Micrograms Per Cubic Metre	Every 6 days

*\*Note: The monitoring at Point 9 required by condition M2 is conducted by the licensee to determine compliance with the limits specified for Points 6 & 7 in condition L3.3*

Figure 1 – EPL 767 Monitoring Point Locations



This environmental monitoring summary is provided in accordance with the requirements of the POEA Act. It is distinct to the environmental monitoring summary which is provided in accordance with the requirements of Project Approval 08\_0149 which was granted under Section 75J of the NSW Environmental Planning and Assessment Act, 1979 on 22 June 2009.

**Monitoring Summary**

Monitoring Point 1 – Dust Gauge at 136 The Crescent			
Month	Insoluble Solids (g/m <sup>2</sup> /month)	Ash (g/m <sup>2</sup> /month)	Combustible Solids (g/m <sup>2</sup> /month)
Jan-21	0.9	0.3	0.6
Feb-21	1.1	0.3	0.8
Mar-21	2.9	0.7	2.2
Apr-21	0.9	0.2	0.7
May-21	0.6	0.2	0.4
Jun-21	0.2	0.1	0.1
Jul-21	0.7	0.2	0.5
Aug-21	0.4	0.1	0.3
Sep-21	0.9	0.3	0.6
Oct-21	0.8	0.3	0.5
Nov-21	1.3	0.3	1.0
Dec-21	1.7	0.4	1.3

**METROPOLITAN COAL – ENVIRONMENTAL PROTECTION LICENCE MONITORING SUMMARY**

<b>Monitoring Point 2 – Dust Gauge at 28 Old Station Road</b>			
<b>Month</b>	<b>Insoluble Solids (g/m<sup>2</sup>/month)</b>	<b>Ash (g/m<sup>2</sup>/month)</b>	<b>Combustible Solids (g/m<sup>2</sup>/month)</b>
Jan-21	0.3	0.2	0.1
Feb-21	0.4	0.3	0.1
Mar-21	0.5	0.2	0.3
Apr-21	0.1	0.1	<0.1
May-21	0.5	0.3	0.2
Jun-21	0.5	0.4	0.1
Jul-21	0.3	0.1	0.2
Aug-21	0.5	0.2	0.3
Sep-21	0.5	0.1	0.4
Oct-21	1.2	0.5	0.7
Nov-21	0.7	0.3	0.4
Dec-21	1.2	0.5	0.7

<b>Monitoring Point 3 – Dust Gauge at Mine Entrance</b>			
<b>Month</b>	<b>Insoluble Solids (g/m<sup>2</sup>/month)</b>	<b>Ash (g/m<sup>2</sup>/month)</b>	<b>Combustible Solids (g/m<sup>2</sup>/month)</b>
Jan-21	0.7	0.1	0.6
Feb-21	2.0	0.3	1.7
Mar-21	1.8	0.3	1.5
Apr-21	2.6	0.3	2.3
May-21	0.6	0.1	0.5
Jun-21	0.8	0.2	0.6
Jul-21	6.8*	0.5*	6.3*
Aug-21	1.0	0.2	0.3
Sep-21	0.3	0.1	0.2
Oct-21	0.9	0.3	0.6
Nov-21	0.6	0.2	0.4
Dec-21	0.7	0.2	0.5

*\*Note: "Very Heavy" deposition of vegetation (80%) and insects (20%) noted in sample.*

<b>Monitoring Point 4 – Dust Gauge at Helensburgh Golf Course</b>			
<b>Month</b>	<b>Insoluble Solids (g/m<sup>2</sup>/month)</b>	<b>Ash (g/m<sup>2</sup>/month)</b>	<b>Combustible Solids (g/m<sup>2</sup>/month)</b>
Jan-21	0.9	0.5	0.4
Feb-21	0.5	0.4	0.1
Mar-21	1.3	0.8	0.5
Apr-21	0.5	0.3	0.2
May-21	0.7	0.6	0.1
Jun-21	0.8	0.6	0.2
Jul-21	0.3	0.3	<0.1
Aug-21	0.3	0.1	0.2
Sep-21	0.6	0.4	0.2
Oct-21	0.5	0.3	0.6
Nov-21	0.4	0.3	0.1
Dec-21	0.7	0.4	0.3

<b>Monitoring Point 5 – Dust Gauge at 83 Parkes Street</b>			
<b>Month</b>	<b>Insoluble Solids (g/m<sup>2</sup>/month)</b>	<b>Ash (g/m<sup>2</sup>/month)</b>	<b>Combustible Solids (g/m<sup>2</sup>/month)</b>
Jan-21	0.3	0.2	0.1
Feb-21	0.2	0.2	<0.1
Mar-21	0.4	0.2	0.2
Apr-21	0.2	0.1	0.1
May-21	0.7	0.4	0.3
Jun-21	0.2	0.2	<0.1
Jul-21	0.3	0.3	<0.1
Aug-21	0.4	0.2	0.2
Sep-21	0.6	0.3	0.3
Oct-21	0.7	0.4	0.3
Nov-21	0.5	0.3	0.2
Dec-21	0.6	0.4	0.2

**METROPOLITAN COAL – ENVIRONMENTAL PROTECTION LICENCE MONITORING SUMMARY**

<b>Monitoring Point 11 – Dust Gauge at 59 Parkes Street</b>			
<b>Month</b>	<b>Insoluble Solids (g/m<sup>2</sup>/month)</b>	<b>Ash (g/m<sup>2</sup>/month)</b>	<b>Combustible Solids (g/m<sup>2</sup>/month)</b>
Jan-21	0.3	0.1	0.2
Feb-21	0.4	0.2	0.2
Mar-21	0.4	0.2	0.2
Apr-21	0.2	0.1	0.1
May-21	0.3	0.1	0.2
Jun-21	0.1	0.1	<0.1
Jul-21	0.7	0.4	0.3
Aug-21	0.3	0.1	0.2
Sep-21	0.3	0.1	0.2
Oct-21	0.7	0.3	0.4
Nov-21	0.6	0.2	0.4
Dec-21	0.4	0.2	0.2

<b>Monitoring Point 12 – Dust Gauge at 32 Old Station Road</b>			
<b>Month</b>	<b>Insoluble Solids (g/m<sup>2</sup>/month)</b>	<b>Ash (g/m<sup>2</sup>/month)</b>	<b>Combustible Solids (g/m<sup>2</sup>/month)</b>
Jan-21	1.0	0.4	0.6
Feb-21	0.7	0.3	0.4
Mar-21	0.8	0.4	0.4
Apr-21	0.4	0.1	0.3
May-21	0.9	0.5	0.4
Jun-21	0.2	0.1	0.1
Jul-21	0.4	0.3	0.1
Aug-21	0.4	0.1	0.3
Sep-21	0.8	0.3	0.5
Oct-21	1.8	0.8	1.0
Nov-21	0.9	0.3	0.6
Dec-21	1.3	0.4	0.9

**METROPOLITAN COAL – ENVIRONMENTAL PROTECTION LICENCE MONITORING SUMMARY**

<b>Monitoring Point 13 – Dust Gauge at 88 Parkes Street</b>			
<b>Month</b>	<b>Insoluble Solids (g/m<sup>2</sup>/month)</b>	<b>Ash (g/m<sup>2</sup>/month)</b>	<b>Combustible Solids (g/m<sup>2</sup>/month)</b>
Jan-21	0.4	0.3	0.1
Feb-21	0.5	0.4	0.1
Mar-21	0.4	0.1	0.3
Apr-21	0.5	0.2	0.3
May-21	0.3	0.2	0.1
Jun-21	0.2	0.2	<0.1
Jul-21	0.3	0.2	0.1
Aug-21	0.4	0.2	0.2
Sep-21	0.5	0.3	0.2
Oct-21	0.7	0.4	0.3
Nov-21	0.9	0.5	0.4
Dec-21	1.2	0.8	0.4

<b>Monitoring Point 14 – Dust Gauge at Helensburgh Public School</b>			
<b>Month</b>	<b>Insoluble Solids (g/m<sup>2</sup>/month)</b>	<b>Ash (g/m<sup>2</sup>/month)</b>	<b>Combustible Solids (g/m<sup>2</sup>/month)</b>
Jan-21	0.2	0.1	0.1
Feb-21	0.5	0.1	0.4
Mar-21	0.4	0.1	0.3
Apr-21	0.9	0.1	0.8
May-21	0.5	0.2	0.3
Jun-21	0.2	0.1	0.1
Jul-21	0.1	0.1	<0.1
Aug-21	0.5	0.2	0.3
Sep-21	0.5	0.2	0.3
Oct-21	0.8	0.2	0.6
Nov-21	0.2	0.1	0.1
Dec-21	0.6	0.2	0.4

<b>Monitoring Point 15 – Dust Gauge at Holy Cross Primary School</b>			
<b>Month</b>	<b>Insoluble Solids (g/m<sup>2</sup>/month)</b>	<b>Ash (g/m<sup>2</sup>/month)</b>	<b>Combustible Solids (g/m<sup>2</sup>/month)</b>
Jan-21	0.3	0.1	0.2
Feb-21	0.4	0.2	0.2
Mar-21	3.0	2.0	1.0
Apr-21	0.4	0.2	0.2
May-21	0.2	0.1	0.1
Jun-21	0.2	0.1	0.1
Jul-21	0.3	0.1	0.2
Aug-21	0.4	0.1	0.3
Sep-21	1.2	0.5	0.7
Oct-21	1.0	0.2	0.8
Nov-21	0.7	0.2	0.5
Dec-21	1.1	0.3	0.8

**METROPOLITAN COAL – ENVIRONMENTAL PROTECTION LICENCE MONITORING SUMMARY**

<b>Monitoring Point 16 – High Volume Air Sampler at 12 Robertson Street</b>			
<b>Date</b>	<b>PM10 (µg/m<sup>3</sup>)</b>	<b>Date</b>	<b>PM10 (µg/m<sup>3</sup>)</b>
03/01/2021	4.8	08/07/2021	21.0
09/01/2021	4.8	14/07/2021	5.9
15/01/2021	26.0	20/07/2021	1.2
21/01/2021	11.7	26/07/2021	1.4
27/01/2021	4.9	01/08/2021	7.0
02/02/2021	8.8	07/08/2021	6.6
08/02/2021	11.7	13/08/2021	7.3
14/02/2021	13	19/08/2021	16.0
20/02/2021	7.9	25/08/2021	1.3
26/02/2021	14.1	31/08/2021	7.0
04/03/2021	15.5	06/09/2021	9.3
10/03/2021	11	12/09/2021	11.9
16/03/2021	6.5	18/09/2021	10.3
22/03/2021	6.8	24/09/2021	9.4
28/03/2021	8.7	30/09/2021	7.0
03/04/2021	6.5	06/10/2021	13.2
09/04/2021	10.8	12/10/2021	6.5
15/04/2021	19.9	18/10/2021	12.9
21/04/2021	9.9	24/10/2021	11.2
27/04/2021	14.8	30/10/2021	15.2
03/05/2021	112**	05/11/2021	7.7
09/05/2021	86.3**	11/11/2021	12.6
15/05/2021	4.0	17/11/2021	9.2
21/05/2021	9.2	23/11/2021	11.3
27/05/2021	1.2	29/11/2021	22.4
02/06/2021	13.7	05/12/2021	11.2
08/06/2021	6.6	11/12/2021	8.1
14/06/2021	9.6	17/12/2021	16.6
20/06/2021	4.1	23/12/2021	12.8
26/06/2021	3.0	29/12/2021	6.9
02/07/2021	11.2		

**\*\*Note: Significant Hazard Reduction activity and associated smoke during May 2021**



**METROPOLITAN COAL – ENVIRONMENTAL PROTECTION LICENCE MONITORING SUMMARY**

<b>Point 9* – The Clean Water Tank of the Water Treatment Plant</b>				
<b>Month</b>	<b>Oil &amp; Grease (mg/L)</b>	<b>pH</b>	<b>TSS (mg/L)</b>	<b>Exceedance (Y/N)</b>
Jan-21	Invalid Sample <sup>#</sup>	Invalid Sample <sup>#</sup>	Invalid Sample <sup>#</sup>	N/A
Feb-21	Invalid Sample <sup>#</sup>	Invalid Sample <sup>#</sup>	Invalid Sample <sup>#</sup>	N/A
Mar-21	<6	8.30	9	N
Apr-21	Invalid Sample <sup>#</sup>	Invalid Sample <sup>#</sup>	Invalid Sample <sup>#</sup>	N/A
May-21	Invalid Sample <sup>#</sup>	Invalid Sample <sup>#</sup>	Invalid Sample <sup>#</sup>	N/A
Jun-21	<5	7.35	11	N
Jul-21	<5	8.40	8	N
Aug-21	Invalid Sample <sup>#</sup>	Invalid Sample <sup>#</sup>	Invalid Sample <sup>#</sup>	N/A
Sep-21	Invalid Sample <sup>#</sup>	Invalid Sample <sup>#</sup>	Invalid Sample <sup>#</sup>	N/A
Oct-21	Invalid Sample <sup>#</sup>	Invalid Sample <sup>#</sup>	Invalid Sample <sup>#</sup>	N/A
Nov-21	Invalid Sample <sup>#</sup>	Invalid Sample <sup>#</sup>	Invalid Sample <sup>#</sup>	N/A
Dec-21	Invalid Sample <sup>#</sup>	Invalid Sample <sup>#</sup>	Invalid Sample <sup>#</sup>	N/A
<b>Licence Limit</b>	<b>10mg/L</b>	<b>6.5-8.5</b>	<b>30 mg/L</b>	

*\*Note: The monitoring at Point 9 required by condition M2 is conducted by the licensee to determine compliance with the limits specified for Points 6 & 7 in condition L3.3.*

*#Note: No water discharged to Camp Creek at time of sampling*

<b>Point 10 – The Flowmeter on the Clean Water Discharge Tank at the Water Treatment Plant</b>	
<b>Month</b>	<b>Volume (kL Per Day)</b>
Jan-21	150
Feb-21	251
Mar-21	304
Apr-21	222
May-21	268
Jun-21	139
Jul-21	224
Aug-21	278
Sep-21	408
Oct-21	414
Nov-21	295
Dec-21	180