

**Introduction**

The *Protection of the Environment Operations Act 1997* (POEO Act) requires that holders of an environment protection licence make their pollution monitoring data publicly available in a timely manner.

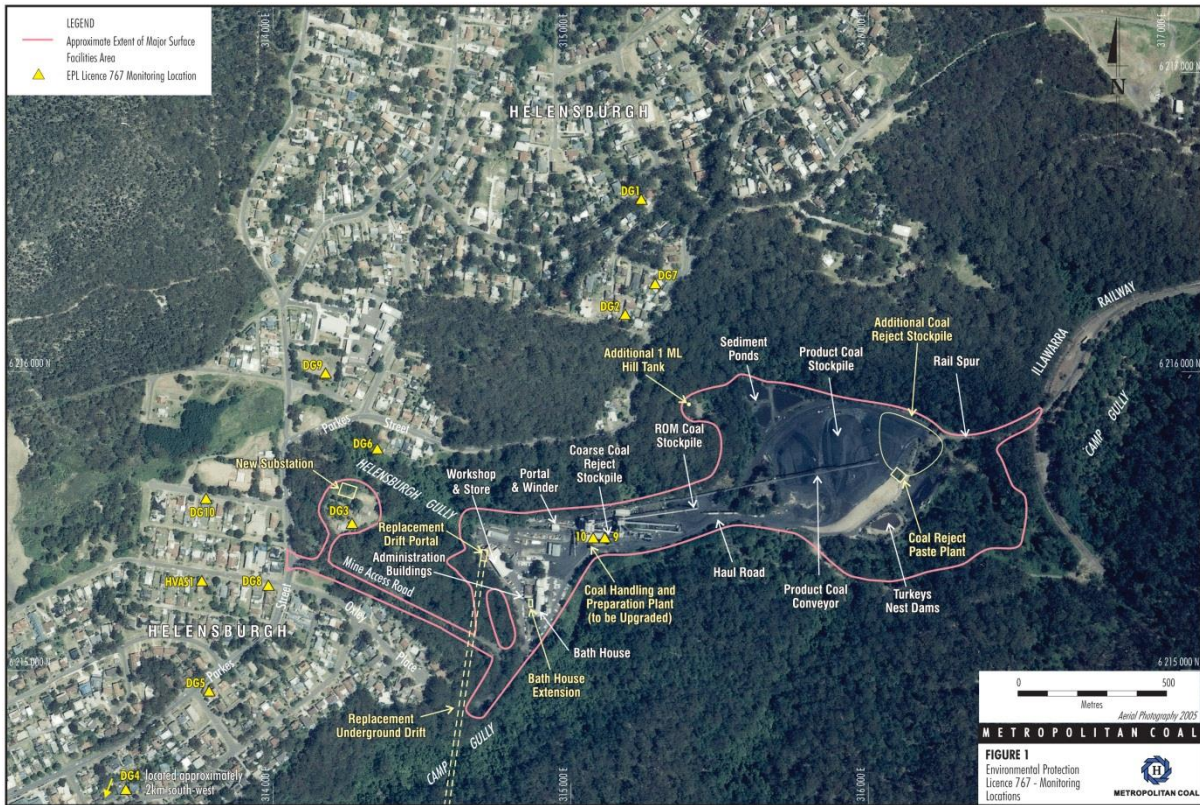
Metropolitan Coal is holder of Environmental Protection Licence 767 (EPL 767). This licence pertains to ‘Mining for Coal’ and ‘Coal Works’. EPL 767 identifies a number of monitoring points as shown in **Table 1 and Figure 1**.

**Table 1 – EPL 767 Monitoring Points and Parameters**

Monitoring Point Number	Name	Parameter
1	Dust Gauge at 136 The Crescent	Ash / Combustible Solids / Insoluble Solids
2	Dust Gauge at 28 Old Station Road	Ash / Combustible Solids / Insoluble Solids
3	Dust Gauge at The Mine Entrance	Ash / Combustible Solids / Insoluble Solids
4	Dust Gauge at Helensburgh Golf Course	Ash / Combustible Solids / Insoluble Solids
5	Dust Gauge at 83 Parkes Street	Ash / Combustible Solids / Insoluble Solids
9*	Clean Water Tank at Water Treatment Plant	Oil and Grease / pH / TSS
10	Flowmeter on from Water Treatment Plant to Camp Creek	Kilolitres Per Day
11	Dust Gauge at 59 Parkes Street	Ash / Combustible Solids / Insoluble Solids
12	Dust Gauge at 32 Old Station Road	Ash / Combustible Solids / Insoluble Solids
13	Dust Gauge at 88 Parkes Street	Ash / Combustible Solids / Insoluble Solids
14	Dust Gauge at Helensburgh Public School	Ash / Combustible Solids / Insoluble Solids
15	Dust Gauge at Holy Cross Primary School	Ash / Combustible Solids / Insoluble Solids
16	High Volume Air Sampler at 12 Robertson Street	Micrograms Per Cubic Metre

*\*Note: The monitoring at Point 9 required by condition M2 is conducted by the licensee to determine compliance with the limits specified for Points 6 & 7 in condition L3.3.*

Figure 1 – EPL 767 Monitoring Point Locations



This environmental monitoring summary is provided in accordance with the requirements of the POEA Act. It is distinct to the environmental monitoring summary which is provided in accordance with the requirements of Project Approval 08\_0149 which was granted under Section 75J of the NSW Environmental Planning and Assessment Act, 1979 on 22 June 2009.

**Monitoring Summary**

Monitoring Point 1 – Dust Gauge at 136 The Crescent			
Month	Insoluble Solids (g/m <sup>2</sup> /month)	Ash (g/m <sup>2</sup> /month)	Combustible Solids (g/m <sup>2</sup> /month)
Jan-19	0.7	0.4	0.3
Feb-19	2.5	1.1	1.4
Mar-19	1.7	1.0	0.7
Apr-19	0.8	0.4	0.4
May-19	0.3	0.1	0.2
Jun-19			
Jul-19			
Aug-19			
Sep-19			
Oct-19			
Nov-19			
Dec-19			

<b>Monitoring Point 2 – Dust Gauge at 28 Old Station Road</b>			
<b>Month</b>	<b>Insoluble Solids (g/m<sup>2</sup>/month)</b>	<b>Ash (g/m<sup>2</sup>/month)</b>	<b>Combustible Solids (g/m<sup>2</sup>/month)</b>
Jan-19	0.8	0.4	0.4
Feb-19	1.2	0.5	0.7
Mar-19	0.7	0.4	0.3
Apr-19	1.1	0.5	0.6
May-19	0.4	0.2	0.2
Jun-19			
Jul-19			
Aug-19			
Sep-19			
Oct-19			
Nov-19			
Dec-19			

<b>Monitoring Point 3 – Dust Gauge at Mine Entrance</b>			
<b>Month</b>	<b>Insoluble Solids (g/m<sup>2</sup>/month)</b>	<b>Ash (g/m<sup>2</sup>/month)</b>	<b>Combustible Solids (g/m<sup>2</sup>/month)</b>
Jan-19	1.9	0.7	1.2
Feb-19	1.1	0.2	0.9
Mar-19	0.3	0.1	0.2
Apr-19	5.0	1.0	4.0
May-19	0.4	0.1	0.3
Jun-19			
Jul-19			
Aug-19			
Sep-19			
Oct-19			
Nov-19			
Dec-19			

<b>Monitoring Point 4 – Dust Gauge at Helensburgh Golf Course</b>			
<b>Month</b>	<b>Insoluble Solids (g/m<sup>2</sup>/month)</b>	<b>Ash (g/m<sup>2</sup>/month)</b>	<b>Combustible Solids (g/m<sup>2</sup>/month)</b>
Jan-19	1.3	0.9	0.4
Feb-19	1.6	1.2	0.4
Mar-19	0.9	0.6	0.3
Apr-19	1.0	0.6	0.4
May-19	0.4	0.3	0.1
Jun-19			
Jul-19			
Aug-19			
Sep-19			
Oct-19			
Nov-19			
Dec-19			

<b>Monitoring Point 5 – Dust Gauge at 83 Parkes Street</b>			
<b>Month</b>	<b>Insoluble Solids (g/m<sup>2</sup>/month)</b>	<b>Ash (g/m<sup>2</sup>/month)</b>	<b>Combustible Solids (g/m<sup>2</sup>/month)</b>
Jan-19	2.3	1.4	0.9
Feb-19	1.1	0.8	0.3
Mar-19	0.9	0.5	0.4
Apr-19	0.5	0.2	0.3
May-19	0.3	0.1	0.2
Jun-19			
Jul-19			
Aug-19			
Sep-19			
Oct-19			
Nov-19			
Dec-19			

<b>Monitoring Point 11 – Dust Gauge at 59 Parkes Street</b>			
<b>Month</b>	<b>Insoluble Solids (g/m<sup>2</sup>/month)</b>	<b>Ash (g/m<sup>2</sup>/month)</b>	<b>Combustible Solids (g/m<sup>2</sup>/month)</b>
Jan-19	1.2	0.6	0.6
Feb-19	1.1	0.6	0.5
Mar-19	0.6	0.4	0.2
Apr-19	0.5	0.2	0.3
May-19	0.3	0.1	0.2
Jun-19			
Jul-19			
Aug-19			
Sep-19			
Oct-19			
Nov-19			
Dec-19			

<b>Monitoring Point 12 – Dust Gauge at 32 Old Station Road</b>			
<b>Month</b>	<b>Insoluble Solids (g/m<sup>2</sup>/month)</b>	<b>Ash (g/m<sup>2</sup>/month)</b>	<b>Combustible Solids (g/m<sup>2</sup>/month)</b>
Jan-19	2.0	0.9	1.1
Feb-19	2.8	1.0	1.8
Mar-19	1.4	0.8	0.6
Apr-19	0.6	0.2	0.4
May-19	0.5	0.2	0.3
Jun-19			
Jul-19			
Aug-19			
Sep-19			
Oct-19			
Nov-19			
Dec-19			

**METROPOLITAN COAL – ENVIRONMENTAL PROTECTION LICENCE MONITORING SUMMARY**

<b>Monitoring Point 13 – Dust Gauge at 88 Parkes Street</b>			
<b>Month</b>	<b>Insoluble Solids (g/m<sup>2</sup>/month)</b>	<b>Ash (g/m<sup>2</sup>/month)</b>	<b>Combustible Solids (g/m<sup>2</sup>/month)</b>
Jan-19	1.9	1.1	0.8
Feb-19	2.5	1.7	0.8
Mar-19	2.0	1.2	0.8
Apr-19	1.9	1.1	0.8
May-19	0.7	0.3	0.4
Jun-19			
Jul-19			
Aug-19			
Sep-19			
Oct-19			
Nov-19			
Dec-19			

<b>Monitoring Point 14 – Dust Gauge at Helensburgh Public School</b>			
<b>Month</b>	<b>Insoluble Solids (g/m<sup>2</sup>/month)</b>	<b>Ash (g/m<sup>2</sup>/month)</b>	<b>Combustible Solids (g/m<sup>2</sup>/month)</b>
Jan-19	3.0	1.2	1.8
Feb-19	1.9	0.6	1.3
Mar-19	2.5	1.1	1.4
Apr-19	1.5	0.5	1.0
May-19	0.6	0.1	0.5
Jun-19			
Jul-19			
Aug-19			
Sep-19			
Oct-19			
Nov-19			
Dec-19			

<b>Monitoring Point 15 – Dust Gauge at Holy Cross Primary School</b>			
<b>Month</b>	<b>Insoluble Solids (g/m<sup>2</sup>/month)</b>	<b>Ash (g/m<sup>2</sup>/month)</b>	<b>Combustible Solids (g/m<sup>2</sup>/month)</b>
Jan-19	1.7	0.8	0.9
Feb-19	2.0	1.3	0.7
Mar-19	1.0	0.6	0.4
Apr-19	0.6	0.2	0.4
May-19	0.4	0.1	0.3
Jun-19			
Jul-19			
Aug-19			
Sep-19			
Oct-19			
Nov-19			
Dec-19			

<b>Monitoring Point 16 – High Volume Air Sampler at 12 Robertson Street</b>			
<b>Date</b>	<b>PM10 (µg/m<sup>3</sup>)</b>	<b>Date</b>	<b>PM10 (µg/m<sup>3</sup>)</b>
02/01/2019	9.3		
08/01/2019	18.4		
14/01/2019	16.5		
20/01/2019	17.1		
26/01/2019	34.7		
01/02/2019	4.8		
07/02/2019	2.4		
13/02/2019	10.0		
19/02/2019	14.4		
25/02/2019	6.1		
03/03/2019	6.9		
09/03/2019	20.1		
15/03/2019	11.6		
21/03/2019	4.4		
27/03/2019	14.1		
02/04/2019	9.6		
08/04/2019	21.4		
14/04/2019	17.4		
20/04/2019	11.8		
26/04/2019	1.6		
02/05/2019	40.6		
08/05/2019	8.5		
14/05/2019	11.3		
20/05/2019	30.7		
26/05/2019	10.4		



**METROPOLITAN COAL – ENVIRONMENTAL PROTECTION LICENCE MONITORING SUMMARY**

<b>Point 9* – The Clean Water Tank of the Water Treatment Plant</b>				
<b>Month</b>	<b>Oil &amp; Grease (mg/L)</b>	<b>pH</b>	<b>TSS (mg/L)</b>	<b>Exceedance (Y/N)</b>
Jan-19	Invalid Sample <sup>#</sup>	Invalid Sample <sup>#</sup>	Invalid Sample <sup>#</sup>	N/A
Feb-19	<5	8.35	12.0	N
Mar-19	Invalid Sample <sup>#</sup>	Invalid Sample <sup>#</sup>	Invalid Sample <sup>#</sup>	N/A
Apr-19	Invalid Sample <sup>#</sup>	Invalid Sample <sup>#</sup>	Invalid Sample <sup>#</sup>	N/A
May-19	Invalid Sample <sup>#</sup>	Invalid Sample <sup>#</sup>	Invalid Sample <sup>#</sup>	N/A
Jun-19				
Jul-19				
Aug-19				
Sep-19				
Oct-19				
Nov-19				
Dec-19				
<b>Licence Limit</b>	<b>10mg/L</b>	<b>6.5-8.5</b>	<b>30 mg/L</b>	

*\*Note: The monitoring at Point 9 required by condition M2 is conducted by the licensee to determine compliance with the limits specified for Points 6 & 7 in condition L3.3.*

*#Note: No water discharged to Camp Creek at time of sampling*

<b>Point 10 – The Flowmeter on the Clean Water Discharge Tank at the Water Treatment Plant</b>	
<b>Month</b>	<b>Volume (kL Per Day)</b>
Jan-19	87
Feb-19	104
Mar-19	162
Apr-19	171
May-19	132
Jun-19	
Jul-19	
Aug-19	
Sep-19	
Oct-19	
Nov-19	
Dec-19	