

**Introduction**

The *Protection of the Environment Operations Act 1997* (POEO Act) requires that holders of an environment protection licence make their pollution monitoring data publicly available in a timely manner.

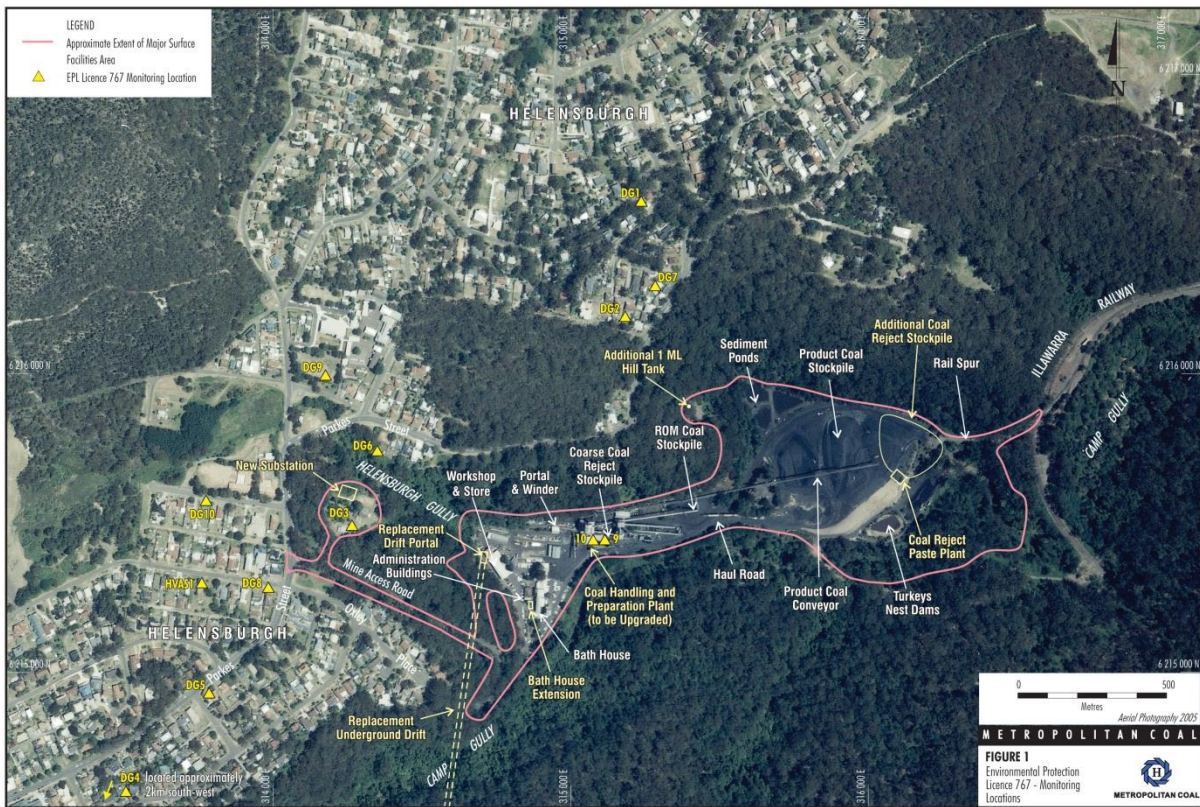
Metropolitan Coal is holder of Environmental Protection Licence 767 (EPL 767). This licence pertains to ‘Mining for Coal’ and ‘Coal Works’. EPL 767 identifies a number of monitoring points as shown in **Table 1 and Figure 1**.

**Table 1 – EPL 767 Monitoring Points and Parameters**

Monitoring Point Number	Name	Parameter
1	Dust Gauge at 136 The Crescent	Ash / Combustible Solids / Insoluble Solids
2	Dust Gauge at 28 Old Station Road	Ash / Combustible Solids / Insoluble Solids
3	Dust Gauge at The Mine Entrance	Ash / Combustible Solids / Insoluble Solids
4	Dust Gauge at Helensburgh Golf Course	Ash / Combustible Solids / Insoluble Solids
5	Dust Gauge at 83 Parkes Street	Ash / Combustible Solids / Insoluble Solids
9*	Clean Water Tank at Water Treatment Plant	Oil and Grease / pH / TSS
10	Flowmeter on from Water Treatment Plant to Camp Creek	Kilolitres Per Day
11	Dust Gauge at 59 Parkes Street	Ash / Combustible Solids / Insoluble Solids
12	Dust Gauge at 32 Old Station Road	Ash / Combustible Solids / Insoluble Solids
13	Dust Gauge at 88 Parkes Street	Ash / Combustible Solids / Insoluble Solids
14	Dust Gauge at Helensburgh Public School	Ash / Combustible Solids / Insoluble Solids
15	Dust Gauge at Holy Cross Primary School	Ash / Combustible Solids / Insoluble Solids
16	High Volume Air Sampler at 12 Robertson Street	Micrograms Per Cubic Metre

*\*Note: The monitoring at Point 9 required by condition M2 is conducted by the licensee to determine compliance with the limits specified for Points 6 & 7 in condition L3.3.*

Figure 1 – EPL 767 Monitoring Point Locations



This environmental monitoring summary is provided in accordance with the requirements of the POEA Act. It is distinct to the environmental monitoring summary which is provided in accordance with the requirements of Project Approval 08\_0149 which was granted under Section 75J of the NSW Environmental Planning and Assessment Act, 1979 on 22 June 2009.

**Monitoring Summary**

Monitoring Point 1 – Dust Gauge at 136 The Crescent			
Month	Insoluble Solids (g/m <sup>2</sup> /month)	Ash (g/m <sup>2</sup> /month)	Combustible Solids (g/m <sup>2</sup> /month)
Jan-18	1.2	0.6	0.6
Feb-18	1.4	0.7	0.7
Mar-18	0.5	0.3	0.2
Apr-18	0.4	0.3	0.1
May-18	0.5	0.3	0.2
Jun-18	Broken Bottle	Broken Bottle	Broken Bottle
Jul-18	0.3	0.2	0.1
Aug-18	0.5	0.3	0.2
Sep-18	0.8	0.4	0.4
Oct-18	0.7	0.3	0.4
Nov-18	1.1	0.5	0.6
Dec-18			

<b>Monitoring Point 2 – Dust Gauge at 28 Old Station Road</b>			
<b>Month</b>	<b>Insoluble Solids (g/m<sup>2</sup>/month)</b>	<b>Ash (g/m<sup>2</sup>/month)</b>	<b>Combustible Solids (g/m<sup>2</sup>/month)</b>
Jan-18	1.3	0.6	0.7
Feb-18	0.9	0.4	0.5
Mar-18	0.2	0.2	<0.1
Apr-18	0.3	0.2	0.1
May-18	0.3	0.2	0.1
Jun-18	0.4	0.2	0.2
Jul-18	0.1	0.1	<0.1
Aug-18	0.3	0.2	0.1
Sep-18	0.8	0.3	0.5
Oct-18	0.6	0.2	0.4
Nov-18	0.5	0.2	0.3
Dec-18			

<b>Monitoring Point 3 – Dust Gauge at Mine Entrance</b>			
<b>Month</b>	<b>Insoluble Solids (g/m<sup>2</sup>/month)</b>	<b>Ash (g/m<sup>2</sup>/month)</b>	<b>Combustible Solids (g/m<sup>2</sup>/month)</b>
Jan-18	1.3	0.7	0.6
Feb-18	1.6	1.2	0.4
Mar-18	1.3	1.0	0.3
Apr-18	1.0	0.7	0.3
May-18	2.0	1.5	0.5
Jun-18	1.9	1.4	0.5
Jul-18	1.4	0.9	0.5
Aug-18	0.6	0.4	0.2
Sep-18	1.3	0.9	0.4
Oct-18	1.0	0.6	0.4
Nov-18	0.5	0.2	0.3
Dec-18			

<b>Monitoring Point 4 – Dust Gauge at Helensburgh Golf Course</b>			
<b>Month</b>	<b>Insoluble Solids (g/m<sup>2</sup>/month)</b>	<b>Ash (g/m<sup>2</sup>/month)</b>	<b>Combustible Solids (g/m<sup>2</sup>/month)</b>
Jan-18	1.1	0.7	0.4
Feb-18	0.6	0.5	0.1
Mar-18	0.4	0.4	<0.1
Apr-18	1.5	1.3	0.2
May-18	0.7	0.6	0.1
Jun-18	1.3	0.9	0.4
Jul-18	0.3	0.3	<0.1
Aug-18	1.0	0.8	0.2
Sep-18	1.2	0.8	0.4
Oct-18	0.9	0.6	0.3
Nov-18	0.9	0.8	0.1
Dec-18			

<b>Monitoring Point 5 – Dust Gauge at 83 Parkes Street</b>			
<b>Month</b>	<b>Insoluble Solids (g/m<sup>2</sup>/month)</b>	<b>Ash (g/m<sup>2</sup>/month)</b>	<b>Combustible Solids (g/m<sup>2</sup>/month)</b>
Jan-18	0.7	0.5	0.2
Feb-18	0.9	0.7	0.2
Mar-18	0.4	0.4	<0.1
Apr-18	0.6	0.4	0.2
May-18	0.7	0.5	0.2
Jun-18	0.6	0.3	0.3
Jul-18	0.1	0.1	<0.1
Aug-18	0.6	0.4	0.2
Sep-18	0.6	0.4	0.2
Oct-18	0.3	0.2	0.1
Nov-18	0.6	0.5	0.1
Dec-18			

**METROPOLITAN COAL – ENVIRONMENTAL PROTECTION LICENCE MONITORING SUMMARY**

<b>Monitoring Point 11 – Dust Gauge at 59 Parkes Street</b>			
<b>Month</b>	<b>Insoluble Solids (g/m<sup>2</sup>/month)</b>	<b>Ash (g/m<sup>2</sup>/month)</b>	<b>Combustible Solids (g/m<sup>2</sup>/month)</b>
Jan-18	0.8	0.5	0.3
Feb-18	0.7	0.4	0.3
Mar-18	0.1	0.1	<0.1
Apr-18	0.3	0.2	0.1
May-18	0.3	0.2	0.1
Jun-18	0.2	0.1	0.1
Jul-18	0.2	0.2	<0.1
Aug-18	0.5	0.2	0.3
Sep-18	0.7	0.4	0.3
Oct-18	0.4	0.2	0.2
Nov-18	0.5	0.4	0.1
Dec-18			

<b>Monitoring Point 12 – Dust Gauge at 32 Old Station Road</b>			
<b>Month</b>	<b>Insoluble Solids (g/m<sup>2</sup>/month)</b>	<b>Ash (g/m<sup>2</sup>/month)</b>	<b>Combustible Solids (g/m<sup>2</sup>/month)</b>
Jan-18	2.2	0.8	1.4
Feb-18	1.8	0.5	1.3
Mar-18	0.5	0.2	0.3
Apr-18	0.7	0.4	0.3
May-18	0.8	0.4	0.4
Jun-18	0.6	0.2	0.4
Jul-18	0.1	0.1	<0.1
Aug-18	0.8	0.3	0.5
Sep-18	0.9	0.4	0.5
Oct-18	0.5	0.2	0.3
Nov-18	1.9	0.5	1.4
Dec-18			

**METROPOLITAN COAL – ENVIRONMENTAL PROTECTION LICENCE MONITORING SUMMARY**

<b>Monitoring Point 13 – Dust Gauge at 88 Parkes Street</b>			
<b>Month</b>	<b>Insoluble Solids (g/m<sup>2</sup>/month)</b>	<b>Ash (g/m<sup>2</sup>/month)</b>	<b>Combustible Solids (g/m<sup>2</sup>/month)</b>
Jan-18	1.6	0.9	0.7
Feb-18	1.6	1.1	0.5
Mar-18	1.2	0.8	0.4
Apr-18	1.1	0.8	0.3
May-18	1.5	0.9	0.6
Jun-18	1.1	0.6	0.5
Jul-18	0.6	0.4	0.2
Aug-18	0.8	0.5	0.3
Sep-18	1.9	1.2	0.7
Oct-18	0.9	0.7	0.2
Nov-18	1.7	1.0	0.7
Dec-18			

<b>Monitoring Point 14 – Dust Gauge at Helensburgh Public School</b>			
<b>Month</b>	<b>Insoluble Solids (g/m<sup>2</sup>/month)</b>	<b>Ash (g/m<sup>2</sup>/month)</b>	<b>Combustible Solids (g/m<sup>2</sup>/month)</b>
Jan-18	0.9	0.4	0.5
Feb-18	1.0	0.5	0.5
Mar-18	0.4	0.3	0.1
Apr-18	0.8	0.3	0.5
May-18	0.5	0.3	0.2
Jun-18	0.2	0.1	0.1
Jul-18	0.2	0.1	0.1
Aug-18	0.4	0.2	0.2
Sep-18	0.8	0.3	0.5
Oct-18	0.3	0.1	0.2
Nov-18	0.8	0.2	0.6
Dec-18			

<b>Monitoring Point 15 – Dust Gauge at Holy Cross Primary School</b>			
<b>Month</b>	<b>Insoluble Solids (g/m<sup>2</sup>/month)</b>	<b>Ash (g/m<sup>2</sup>/month)</b>	<b>Combustible Solids (g/m<sup>2</sup>/month)</b>
Jan-18	1.1	0.5	0.6
Feb-18	0.5	0.3	0.2
Mar-18	0.2	0.2	<0.1
Apr-18	1.0	0.6	0.4
May-18	0.6	0.4	0.2
Jun-18	1.1	0.4	0.7
Jul-18	0.3	0.2	0.1
Aug-18	2.1	1.2	0.9
Sep-18	1.6	0.7	0.9
Oct-18	0.6	0.2	0.4
Nov-18	0.8	0.4	0.4
Dec-18			

**METROPOLITAN COAL – ENVIRONMENTAL PROTECTION LICENCE MONITORING SUMMARY**

<b>Monitoring Point 16 – High Volume Air Sampler at 12 Robertson Street</b>			
<b>Date</b>	<b>PM10 (µg/m<sup>3</sup>)</b>	<b>Date</b>	<b>PM10 (µg/m<sup>3</sup>)</b>
01/01/2018	22.2	06/07/2018	7.6
07/01/2018	24.2	12/07/2018	12.2
13/01/2018	14.6	18/07/2018	36.9
19/01/2018	14.3	24/07/2018	27.7
25/01/2018	9.5	30/07/2018	33.2
31/01/2018	13.4	05/08/2018	19.5
06/02/2018	5.0	11/08/2018	13.3
12/02/2018	16.5	17/08/2018	43.2
18/02/2018	19.0	23/08/2018	10.3
24/02/2018	16.2	29/08/2018	10.6
02/03/2018	15.1	04/09/2018	2.9
08/03/2018	9.3	10/09/2018	6.3
14/03/2018	15.0	16/09/2018	4.7
20/03/2018	27.8	22/09/2018	13.1
26/03/2018	8.7	28/09/2018	9.2
01/04/2018	22.8	04/10/2018	6.9
07/04/2018	19.6	10/10/2018	10.9
13/04/2018	23.9	16/10/2018	12.6
19/04/2018	18.8	22/10/2018	15.5
25/04/2018	9.3	28/10/2018	16.6
01/05/2018	5.8	03/11/2018	20.5
07/05/2018	12.6	09/11/2018	12.2
13/05/2018	5.0	15/11/2018	10.6
19/05/2018	6.4	21/11/2018	19.6
25/05/2018	20.0	27/11/2018	16.6
31/05/2018	5.2	03/12/2018	
06/06/2018	4.3	09/12/2018	
12/06/2018	7.5	15/12/2018	
18/06/2018	1.0	21/12/2018	
24/06/2018	5.3	27/12/2018	
30/06/2018	2.6		



**METROPOLITAN COAL – ENVIRONMENTAL PROTECTION LICENCE MONITORING SUMMARY**

<b>Point 9* – The Clean Water Tank of the Water Treatment Plant</b>				
<b>Month</b>	<b>Oil &amp; Grease (mg/L)</b>	<b>pH</b>	<b>TSS (mg/L)</b>	<b>Exceedance (Y/N)</b>
Jan-18	Invalid Sample <sup>#</sup>	Invalid Sample <sup>#</sup>	Invalid Sample <sup>#</sup>	N/A
Feb-18	<5	8.4	13	N
Mar-18	Invalid Sample <sup>#</sup>	Invalid Sample <sup>#</sup>	Invalid Sample <sup>#</sup>	N/A
Apr-18	Invalid Sample <sup>#</sup>	Invalid Sample <sup>#</sup>	Invalid Sample <sup>#</sup>	N/A
May-18	Invalid Sample <sup>#</sup>	Invalid Sample <sup>#</sup>	Invalid Sample <sup>#</sup>	N/A
Jun-18	Invalid Sample <sup>#</sup>	Invalid Sample <sup>#</sup>	Invalid Sample <sup>#</sup>	N/A
Jul-18	Invalid Sample <sup>#</sup>	Invalid Sample <sup>#</sup>	Invalid Sample <sup>#</sup>	N/A
Aug-18	Invalid Sample <sup>#</sup>	Invalid Sample <sup>#</sup>	Invalid Sample <sup>#</sup>	N/A
Sep-18	Invalid Sample <sup>#</sup>	Invalid Sample <sup>#</sup>	Invalid Sample <sup>#</sup>	N/A
Oct-18	Invalid Sample <sup>#</sup>	Invalid Sample <sup>#</sup>	Invalid Sample <sup>#</sup>	N/A
Nov-18	Invalid Sample <sup>#</sup>	Invalid Sample <sup>#</sup>	Invalid Sample <sup>#</sup>	N/A
Dec-18	Invalid Sample <sup>#</sup>	Invalid Sample <sup>#</sup>	Invalid Sample <sup>#</sup>	N/A
<b>Licence Limit</b>	<b>10mg/L</b>	<b>6.5-8.5</b>	<b>30 mg/L</b>	

*\*Note: The monitoring at Point 9 required by condition M2 is conducted by the licensee to determine compliance with the limits specified for Points 6 & 7 in condition L3.3.*

*#Note: No water discharged to Camp Creek at time of sampling*

<b>Point 10 – The Flowmeter on the Clean Water Discharge Tank at the Water Treatment Plant</b>	
<b>Month</b>	<b>Volume (kL Per Day)</b>
Jan-18	465
Feb-18	471
Mar-18	307
Apr-18	140
May-18	52
Jun-18	80
Jul-18	0
Aug-18	14
Sep-18	128
Oct-18	300
Nov-18	195
Dec-18	