

**Introduction**

The *Protection of the Environment Operations Act 1997* (POEO Act) requires that holders of an environment protection licence make their pollution monitoring data publicly available within 14 days of receipt. The NSW EPA Public Register can be found at: [www.epa.nsw.gov.au/licensing-and-regulation/public-registers](http://www.epa.nsw.gov.au/licensing-and-regulation/public-registers)

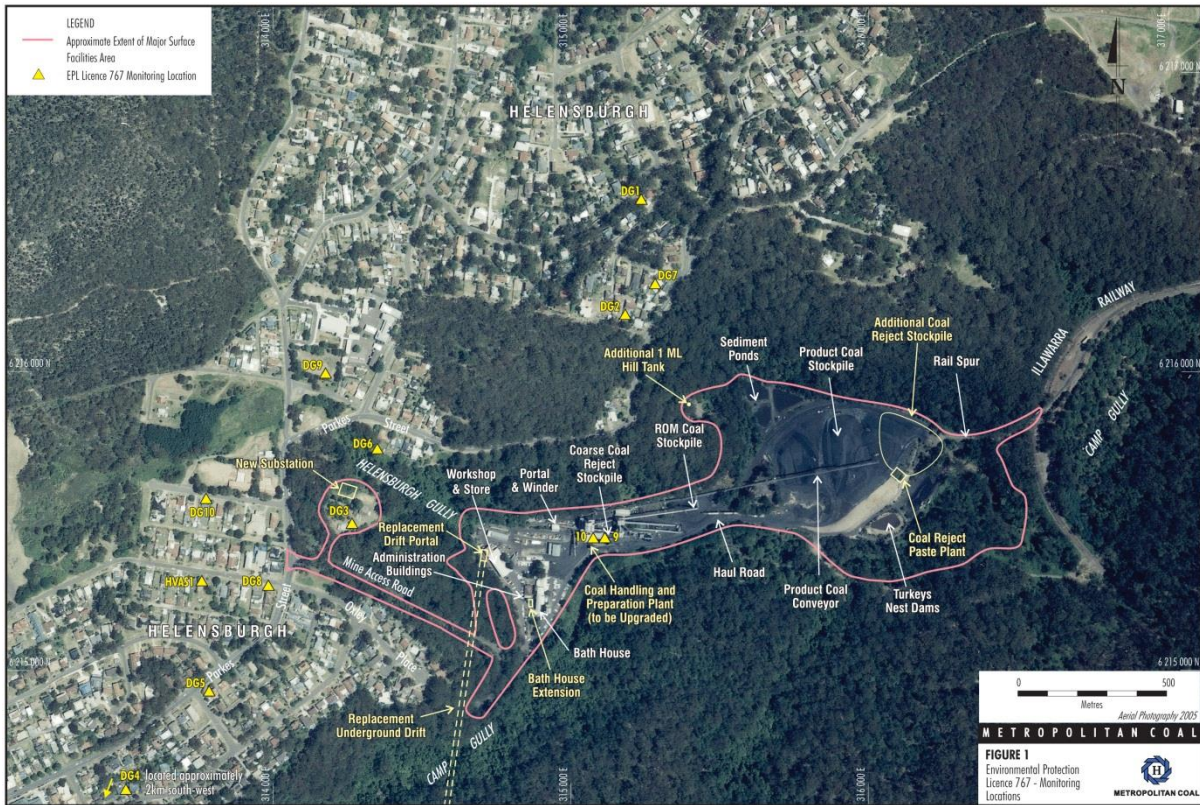
Metropolitan Coal is holder of Environmental Protection Licence 767 (EPL 767). This licence pertains to ‘Mining for Coal’ and ‘Coal Works’. EPL 767 identifies a number of monitoring points as shown in **Table 1 and Figure 1**. Metropolitan Coal is located Off Parkes Street Helensburgh, NSW, 2508.

**Table 1 – EPL 767 Monitoring Points, Parameters and Frequency**

Monitoring Point Number	Name	Parameter	Frequency
1	Dust Gauge at 136 The Crescent	Ash / Combustible Solids / Insoluble Solids	Monthly
2	Dust Gauge at 28 Old Station Road	Ash / Combustible Solids / Insoluble Solids	Monthly
3	Dust Gauge at The Mine Entrance	Ash / Combustible Solids / Insoluble Solids	Monthly
4	Dust Gauge at Helensburgh Golf	Ash / Combustible Solids / Insoluble Solids	Monthly
5	Dust Gauge at 83 Parkes Street	Ash / Combustible Solids / Insoluble Solids	Monthly
9*	Clean Water Tank at Water Treatment	Oil and Grease / pH / TSS	Monthly
10	Flowmeter on from Water Treatment Plant to Camp Creek	Kilolitres Per Day	Daily (continuous)
11	Dust Gauge at 59 Parkes Street	Ash / Combustible Solids / Insoluble Solids	Monthly
12	Dust Gauge at 32 Old Station Road	Ash / Combustible Solids / Insoluble Solids	Monthly
13	Dust Gauge at 88 Parkes Street	Ash / Combustible Solids / Insoluble Solids	Monthly
14	Dust Gauge at Helensburgh Public	Ash / Combustible Solids / Insoluble Solids	Monthly
15	Dust Gauge at Holy Cross Primary School	Ash / Combustible Solids / Insoluble Solids	Monthly
16	High Volume Air Sampler at 12	Micrograms Per Cubic Metre	Every 6 days

*\*Note: The monitoring at Point 9 required by condition M2 is conducted by the licensee to determine compliance with the limits specified for Points 6 & 7 in condition L3.3*

**Figure 1 – EPL 767 Monitoring Point Locations**



This environmental monitoring summary is provided in accordance with the requirements of the POEA Act. It is distinct to the environmental monitoring summary which is provided in accordance with the requirements of Project Approval 08\_0149 which was granted under Section 75J of the NSW Environmental Planning and Assessment Act, 1979 on 22 June 2009.

**Monitoring Summary**

Monitoring Point 1 – Dust Gauge at 136 The Crescent			
Month	Insoluble Solids (g/m <sup>2</sup> /month)	Ash (g/m <sup>2</sup> /month)	Combustible Solids (g/m <sup>2</sup> /month)
Jan-22	1.6	0.3	1.3
Feb-22	1.5	0.4	1.1
Mar-22	1.3	0.4	0.9
Apr-22	1.3	0.7	0.6
May-22	1.1	0.5	0.6
Jun-22	0.5	0.2	0.3
Jul-22	0.6	0.1	0.5
Aug-22	1.1	0.4	0.7
Sep-22	0.9	0.2	0.7
Oct-22			
Nov-22			
Dec-22			

**METROPOLITAN COAL – ENVIRONMENTAL PROTECTION LICENCE MONITORING SUMMARY**

<b>Monitoring Point 2 – Dust Gauge at 28 Old Station Road</b>			
<b>Month</b>	<b>Insoluble Solids (g/m<sup>2</sup>/month)</b>	<b>Ash (g/m<sup>2</sup>/month)</b>	<b>Combustible Solids (g/m<sup>2</sup>/month)</b>
Jan-22	0.8	0.3	0.5
Feb-22	1.0	0.4	0.6
Mar-22	0.1	0.1	<0.1
Apr-22	0.5	0.2	0.3
May-22	0.2	0.1	0.1
Jun-22	0.2	0.1	0.1
Jul-22	0.5	0.2	0.3
Aug-22	0.3	0.1	0.2
Sep-22	0.5	0.1	0.4
Oct-22			
Nov-22			
Dec-22			

<b>Monitoring Point 3 – Dust Gauge at Mine Entrance</b>			
<b>Month</b>	<b>Insoluble Solids (g/m<sup>2</sup>/month)</b>	<b>Ash (g/m<sup>2</sup>/month)</b>	<b>Combustible Solids (g/m<sup>2</sup>/month)</b>
Jan-22	0.9	0.2	0.7
Feb-22	1.1	0.3	0.8
Mar-22	0.3	0.1	0.2
Apr-22	0.5	0.1	0.4
May-22	0.3	0.1	0.2
Jun-22	0.3	0.3	<0.1
Jul-22	0.6	0.1	0.5
Aug-22	0.5	0.2	0.3
Sep-22	0.2	0.1	0.1
Oct-22			
Nov-22			
Dec-22			

**METROPOLITAN COAL – ENVIRONMENTAL PROTECTION LICENCE MONITORING SUMMARY**

<b>Monitoring Point 4 – Dust Gauge at Helensburgh Golf Course</b>			
<b>Month</b>	<b>Insoluble Solids (g/m<sup>2</sup>/month)</b>	<b>Ash (g/m<sup>2</sup>/month)</b>	<b>Combustible Solids (g/m<sup>2</sup>/month)</b>
Jan-22	0.5	0.3	0.2
Feb-22	0.9	0.5	0.4
Mar-22	0.1	0.1	<0.1
Apr-22	0.3	0.1	0.2
May-22	0.3	0.3	<0.1
Jun-22	0.3	0.3	<0.1
Jul-22	0.5	0.4	0.1
Aug-22	0.5	0.4	0.1
Sep-22	0.4	0.4	<0.1
Oct-22			
Nov-22			
Dec-22			

<b>Monitoring Point 5 – Dust Gauge at 83 Parkes Street</b>			
<b>Month</b>	<b>Insoluble Solids (g/m<sup>2</sup>/month)</b>	<b>Ash (g/m<sup>2</sup>/month)</b>	<b>Combustible Solids (g/m<sup>2</sup>/month)</b>
Jan-22	0.4	0.3	0.1
Feb-22	0.7	0.4	0.3
Mar-22	0.1	0.1	<0.1
Apr-22	0.2	0.1	0.1
May-22	0.2	0.2	<0.1
Jun-22	0.3	0.2	0.1
Jul-22	0.2	0.2	<0.1
Aug-22	0.1	0.1	<0.1
Sep-22	0.2	0.2	<0.1
Oct-22			
Nov-22			
Dec-22			

**METROPOLITAN COAL – ENVIRONMENTAL PROTECTION LICENCE MONITORING SUMMARY**

<b>Monitoring Point 11 – Dust Gauge at 59 Parkes Street</b>			
<b>Month</b>	<b>Insoluble Solids (g/m<sup>2</sup>/month)</b>	<b>Ash (g/m<sup>2</sup>/month)</b>	<b>Combustible Solids (g/m<sup>2</sup>/month)</b>
Jan-22	0.5	0.2	0.3
Feb-22	0.8	0.3	0.5
Mar-22	0.7	0.1	0.6
Apr-22	0.4	<0.1	0.4
May-22	0.2	0.2	<0.1
Jun-22	0.4	0.1	0.3
Jul-22	0.3	0.1	0.2
Aug-22	0.2	0.1	0.1
Sep-22	0.5	0.2	0.3
Oct-22			
Nov-22			
Dec-22			

<b>Monitoring Point 12 – Dust Gauge at 32 Old Station Road</b>			
<b>Month</b>	<b>Insoluble Solids (g/m<sup>2</sup>/month)</b>	<b>Ash (g/m<sup>2</sup>/month)</b>	<b>Combustible Solids (g/m<sup>2</sup>/month)</b>
Jan-22	0.8	0.3	0.5
Feb-22	1.2	0.3	0.9
Mar-22	1.3	0.2	1.1
Apr-22	0.4	0.1	0.3
May-22	0.3	0.1	0.2
Jun-22	0.5	0.2	0.3
Jul-22	0.5	0.1	0.4
Aug-22	0.3	0.2	0.1
Sep-22	0.7	0.2	0.5
Oct-22			
Nov-22			
Dec-22			

**METROPOLITAN COAL – ENVIRONMENTAL PROTECTION LICENCE MONITORING SUMMARY**

<b>Monitoring Point 13 – Dust Gauge at 88 Parkes Street</b>			
<b>Month</b>	<b>Insoluble Solids (g/m<sup>2</sup>/month)</b>	<b>Ash (g/m<sup>2</sup>/month)</b>	<b>Combustible Solids (g/m<sup>2</sup>/month)</b>
Jan-22	0.6	0.4	0.2
Feb-22	0.9	0.7	0.2
Mar-22	0.2	0.2	<0.1
Apr-22	0.7	0.4	0.3
May-22	0.8	0.5	0.3
Jun-22	0.3	0.3	<0.1
Jul-22	0.4	0.2	0.2
Aug-22	0.5	0.3	0.2
Sep-22	0.6	0.4	0.2
Oct-22			
Nov-22			
Dec-22			

<b>Monitoring Point 14 – Dust Gauge at Helensburgh Public School</b>			
<b>Month</b>	<b>Insoluble Solids (g/m<sup>2</sup>/month)</b>	<b>Ash (g/m<sup>2</sup>/month)</b>	<b>Combustible Solids (g/m<sup>2</sup>/month)</b>
Jan-22	0.5	0.2	0.3
Feb-22	0.1	0.1	<0.1
Mar-22	0.5	0.2	0.3
Apr-22	6.7*	4.9*	1.8*
May-22	1.3	0.6	0.7
Jun-22	0.4	0.2	0.2
Jul-22	0.5	0.2	0.3
Aug-22	0.4	0.2	0.2
Sep-22	0.5	0.1	0.4
Oct-22			
Nov-22			
Dec-22			

Note:\* Very heavy deposition of dirt, vegetation, sand, and polysaccharide slime recorded.

<b>Monitoring Point 15 – Dust Gauge at Holy Cross Primary School</b>			
<b>Month</b>	<b>Insoluble Solids (g/m<sup>2</sup>/month)</b>	<b>Ash (g/m<sup>2</sup>/month)</b>	<b>Combustible Solids (g/m<sup>2</sup>/month)</b>
Jan-22	0.5	0.3	0.2
Feb-22	0.4	0.2	0.2
Mar-22	2.0	1.3	0.7
Apr-22	0.4	0.1	0.3
May-22	0.8	0.7	0.1
Jun-22	0.4	0.2	0.2
Jul-22	0.6	0.2	0.4
Aug-22	0.6	0.6	<0.1
Sep-22	0.4	0.1	0.3
Oct-22			
Nov-22			
Dec-22			

**METROPOLITAN COAL – ENVIRONMENTAL PROTECTION LICENCE MONITORING SUMMARY**

<b>Monitoring Point 16 – High Volume Air Sampler at 12 Robertson Street</b>			
<b>Date</b>	<b>PM10 (µg/m<sup>3</sup>)</b>	<b>Date</b>	<b>PM10 (µg/m<sup>3</sup>)</b>
04/01/2022	13.4	09/07/2022	4.3
10/01/2022	13.7	15/07/2022	7.7
16/01/2022	19.0	21/07/2022	5.3
22/01/2022	7.3	27/07/2022	4.3
28/01/2022	11.0	02/08/2022	23.0
03/02/2022	14.6	08/08/2022	4.7
09/02/2022	10.3	14/08/2022	1.3
15/02/2022	18.3	20/08/2022	6.2
21/02/2022	17.9	26/08/2022	4.6
27/02/2022	4.6	01/09/2022	11.7
05/03/2022	7.3	07/09/2022	11.9
11/03/2022	8.8	13/09/2022	9.2
17/03/2022	8.3	19/09/2022	6.1
23/03/2022	12.4	25/09/2022	7.5
29/03/2022	1.8		
04/04/2022	8.7		
10/04/2022	5.4		
16/04/2022	6.6		
22/04/2022	0.8		
28/04/2022	<0.1		
04/05/2022	10.0		
10/05/2022	5.8		
16/05/2022	5.3		
22/05/2022	2.8		
28/05/2022	3.0		
03/06/2022	4.9		
09/06/2022	0.8		
15/06/2022	4.4		
21/06/2022	3.8		
27/06/2022	5.7		
03/07/2022	7.2		



**METROPOLITAN COAL – ENVIRONMENTAL PROTECTION LICENCE MONITORING SUMMARY**

<b>Point 9* – The Clean Water Tank of the Water Treatment Plant</b>				
<b>Month</b>	<b>Oil &amp; Grease (mg/L)</b>	<b>pH</b>	<b>TSS (mg/L)</b>	<b>Exceedance (Y/N)</b>
Jan-22	Invalid Sample <sup>#</sup>	Invalid Sample <sup>#</sup>	Invalid Sample <sup>#</sup>	N/A
Feb-22	<5	7.21	22	N
Mar-22	Invalid Sample <sup>#</sup>	Invalid Sample <sup>#</sup>	Invalid Sample <sup>#</sup>	N/A
Apr-22	Invalid Sample <sup>#</sup>	Invalid Sample <sup>#</sup>	Invalid Sample <sup>#</sup>	N/A
May-22	Invalid Sample <sup>#</sup>	Invalid Sample <sup>#</sup>	Invalid Sample <sup>#</sup>	N/A
Jun-22	Invalid Sample <sup>#</sup>	Invalid Sample <sup>#</sup>	Invalid Sample <sup>#</sup>	N/A
Jul-22	<5	7.93	8	N
Aug-22	<5	8.07	22	N
Sep-22	<5	7.78	15	N
Oct-22				
Nov-22				
Dec-22				
<b>Licence Limit</b>	<b>10mg/L</b>	<b>6.5-8.5</b>	<b>30 mg/L</b>	

*\*Note: The monitoring at Point 9 required by condition M2 is conducted by the licensee to determine compliance with the limits specified for Points 6 & 7 in condition L3.3.*

*#Note: No water discharged to Camp Creek at time of sampling*

<b>Point 10 – The Flowmeter on the Clean Water Discharge Tank at the Water Treatment Plant</b>	
<b>Month</b>	<b>Volume (kL Per Day)</b>
Jan-22	177
Feb-22	340
Mar-22	431
Apr-22	140
May-22	73
Jun-22	113
Jul-22	148
Aug-22	132
Sep-22	417
Oct-22	
Nov-22	
Dec-22	