

**WAMBO COAL  
POLLUTION MONITORING DATA  
1 FEBRUARY 2021 – 28 FEBRUARY 2021**

**FEBRUARY REPORT**

Published 18 March 2021

**Environment Protection Licence Number: 529  
Licensee: Wambo Coal Pty Limited, PMB 1, Singleton NSW 2330  
Premises: Wambo Coal Pty Limited, Jerrys Plains Road, Warkworth NSW 2330**

The following pollution monitoring data is published as a requirement of the Wambo Environmental Protection Licence (EPL) 529. A link to EPL529 can be found on the Environmental Protection Authority (EPA) Public Register. A link to the EPA's public register can be found at: <https://www.epa.nsw.gov.au/licensing-and-regulation/public-registers/about-prpoeo>

Monthly interim reports will be provided on a fortnightly basis until a final monthly report is produced when all monthly data is available.

The location of each sampling point is provided in 'Plan 2672-2' at the end of this document.

### Monitoring Data

**Surface and Mine Water Dam Monitoring**

**Monitoring Frequency: Once per month**

**Sampling Method: Grab sample**

**Limits: Nil**

**Table 1 - WCPL Surface and Mine Water Dam Results**

EPL ID	Site ID	Date	pH	EC (µS/cm)	TSS (mg/L)	Comments
Point 24	SW01	3/2/2021	7.08	608	<5	-
Point 25	SW02	3/2/2021	7.34	543	<5	-
Point 26	SW03	3/2/2021	7.23	539	<5	-
Point 27	SW04	3/2/2021	-	-	-	No Flow
Point 28	SW05	3/2/2021	-	-	-	No Flow
Point 29	SW06	3/2/2021	6.83	471	5	-
Point 30	SW07	3/2/2021	7.28	561	<5	-
Point 31	SW08	3/2/2021	7.03	394	<5	-
Point 33	SW15	22/2/2021	8.87	6490	38	-
Point 34	SW27a	3/2/2021	-	-	-	No Flow
Point 36	SW32a	3/2/2021	-	-	-	No Flow
Point 39	SW39	3/2/2021	-	-	-	No Flow
Point 40	SW40	3/2/2021	7.25	542	<5	-
Point 41	SW41	3/2/2021	7.16	200	36	-

**Water Discharge Monitoring**

Monitoring Frequency: Continuous during discharge (EC, pH, Turbidity)  
 Daily during discharge (TSS, Volume)  
 Sampling Method: In line instrumentation (EC, pH Turbidity)  
 Grab sample (TSS)  
 Limits: pH- 6.5 to 9.5  
 TSS – 120  
 Volume – 250ML/day  
 Date sampled: Continuous  
 Date obtained: Continuous

Table 2 - WCPL Discharge Monitoring

Site	Date	pH	TSS (mg/L)	Turbidity (NTU)	Volume (ML/day)	Comments
Point 4	-	-	-	-	-	No Discharges
Point 19	-	-	-	-	-	No Discharges

**Sewerage Treatment Monitoring**

Monitoring Frequency: Quarterly during discharge  
 Sampling Method: Grab sample  
 Limits: Nil  
 Date sampled: No sample in February  
 Date obtained: No sample in February

Table 3- WCPL Discharge Monitoring

EPL ID	Site ID	Date	pH	Faecal Coliforms	Comments
Point 42	STPD2	3 Feb	9.1	~91	
Point 52	STP2	3 Feb	7.06	<9	
Point 55	STPD1	-	-	-	No sample in February

**PM10 Monitoring**

Monitoring Frequency: Continuous  
 Sampling Method: AM22  
 Limits: Nil

Date sampled: Continuous  
 Date obtained: Continuous

Table 4 - WCPL PM10 Results

Date of Run	PM02 - Wambo Road (Caban) (EPA14)		PM03 - Thelander (EPA15)		PM04 - Muller (EPA16)		PM05 - Kelly (EPA 53)	
	PM10 24 Hour Result (ug/m <sup>3</sup> )	Annual Average	PM10 24 Hour Result (ug/m <sup>3</sup> )	Annual Average	PM10 24 Hour Result (ug/m <sup>3</sup> )	Annual Average	PM10 24 Hour Result (ug/m <sup>3</sup> )	Annual Average
1/02/2021	12.6	16.34	23.6	19.33	9.44	11.48	4.5	13.33
2/02/2021	8.5	16.21	15.2	19.26	8.53	11.37	4.2	13.23
3/02/2021	17.1	16.19	26.5	19.25	13.53	11.34	7.2	13.17
4/02/2021	17.5	16.11	32.2	19.15	17.13	11.22	11.9	13.16
5/02/2021	16.5	16.09	31.8	19.11	14.91	11.19	3.8	13.06
6/02/2021	15.6	16.10	21.6	19.11	9.55	11.19	8.5	13.01
7/02/2021	12.6	16.13	15.1	19.13	9.51	11.21	6.1	12.94
8/02/2021	13.2	16.14	20.4	19.16	13.74	11.22	5.4	12.87
9/02/2021	12.4	16.16	17.1	19.18	13.76	11.25	11.8	12.86
10/02/2021	12.5	16.16	12.3	19.17	NaN	11.25	11.9	12.85
11/02/2021	16.4	16.15	14.8	19.16	NaN	11.24	9.7	12.82
12/02/2021	18.5	16.16	38.2	19.22	10.74	11.21	22.5	12.91
13/02/2021	9.4	16.15	12.3	19.18	13.92	11.21	10.9	12.89
14/02/2021	14	16.14	25.8	19.21	12.51	11.19	16.4	12.92
15/02/2021	10	16.11	14.7	19.18	10.49	11.17	11.2	12.91
16/02/2021	8	16.09	16.7	19.17	NaN	11.14	7.1	12.85
17/02/2021	12.6	16.09	28.5	19.21	14.18	11.15	17.2	12.89
18/02/2021	15.1	16.07	21.7	19.21	12.28	11.14	19.0	12.95
19/02/2021	9.8	16.00	17.4	19.16	NaN	11.14	11.8	12.94
20/02/2021	10.3	15.95	20	19.14	9.18	11.10	13.3	12.94
21/02/2021	7.3	15.91	13.8	19.09	5.17	11.04	10.9	12.92
22/02/2021	12	15.90	20.7	19.08	9.32	11.00	5.7	12.86
23/02/2021	14.7	15.90	18.4	19.06	13.82	10.99	14.9	12.88
24/02/2021	10.1	15.90	13.8	19.06	9.63	10.98	9.3	12.85
25/02/2021	15.5	15.90	17.6	19.05	13.33	10.98	15.0	12.87
26/02/2021	16	15.91	24.1	19.09	12.83	10.99	13.7	12.87
27/02/2021	17	15.87	27.1	19.09	15.30	10.97	21.7	12.95
28/02/2021	17.6	15.85	27.8	19.09	20.73	10.96	19.0	13.00

\*NaN >75% of data collected during period

**Meteorological Monitoring**

Monitoring Frequency: Continuous

Sampling Method: Site Meteorological Station EPA17

Limits: Nil

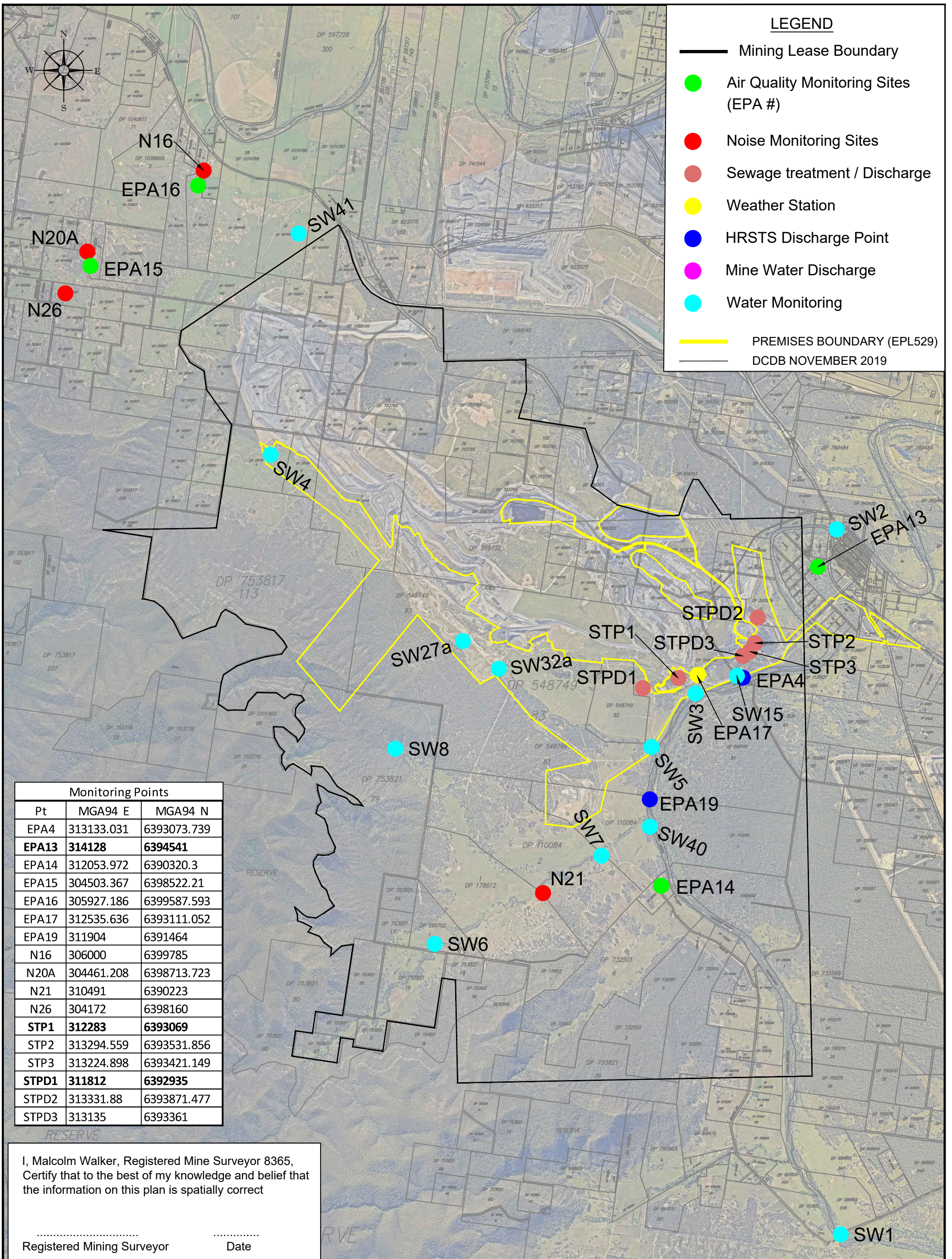
Date sampled: continuous

Date obtained: continuous

Table 5 - WCPL Meteorology

Date	Temperature (2m)			Temperature (10m)			Humidity			Solar Radiation		RAIN	Wind Speed			Wind Direction at 10m	Sigma Theta		
	Average	Min	Max	Average	Min	Max	Average	Min	Max	Average	Max	Sum (mm)	Average	Min	Max	Average	Average	Max	Min
1/02/2021	26.5	21.0	31.1	26.2	21.1	30.2	63.9	46.1	89	419.1	1274.8	0.0	2.3	0.8	5.1	131	22.6	56.0	9.8
2/02/2021	21.8	18.5	27.3	21.6	18.5	26.4	77.9	48.5	100	244.4	1306.3	39.6	2.2	0.2	5.1	126	22.5	79.7	10.7
3/02/2021	21.2	17.1	26.5	21.1	17.5	25.5	69.8	51.0	91	250.8	1245.9	0.0	2.0	0.5	4.8	119	19.9	85.1	7.3
4/02/2021	23.9	16.1	31.6	23.9	16.8	31.1	69.3	39.2	100	339.4	1163.3	0.0	1.6	0.2	5.3	119	25.3	88.1	7.7
5/02/2021	25.7	18.4	32.9	25.6	18.8	32.2	67.2	37.5	100	372.4	1130.2	0.0	2.0	0.1	5.2	124	23.8	69.2	10.0
6/02/2021	22.9	20.1	28.4	23.0	20.4	28.3	87.8	53.7	100	97.5	470.3	5.6	1.4	0.1	5.1	195	27.5	99.5	9.1
7/02/2021	24.1	19.0	30.5	24.0	19.6	29.7	73.6	42.3	100	300.6	1255.0	9.2	2.1	0.2	5.6	205	25.7	91.5	11.1
8/02/2021	21.8	18.4	26.0	21.8	18.9	25.3	71.2	54.7	89	190.2	1140.4	0.0	2.3	0.6	4.8	127	19.6	58.7	11.4
9/02/2021	21.4	15.9	26.6	21.4	16.9	25.8	66.8	44.1	93	272.4	1364.0	0.0	2.2	0.3	4.8	130	20.5	64.8	10.7
10/02/2021	19.4	13.6	24.8	19.5	14.4	24.2	76.5	51.5	100	222.8	1115.8	0.0	2.0	0.0	4.9	129	24.0	95.0	8.2
11/02/2021	21.6	13.1	29.6	21.8	14.1	29.1	68.5	37.7	100	377.3	1134.9	0.0	1.2	0.1	4.2	160	28.8	99.2	8.8
12/02/2021	24.0	14.4	33.4	24.2	14.9	32.8	68.4	37.6	100	242.3	1181.5	0.0	1.6	0.1	4.3	232	24.5	86.0	4.5
13/02/2021	21.8	19.6	24.2	21.8	19.8	24.2	94.2	78.7	100	82.5	527.2	35.6	1.7	0.1	4.0	206	23.5	96.2	9.4
14/02/2021	21.1	16.8	26.6	21.1	17.4	25.8	66.7	41.6	92	327.5	1422.3	0.0	2.3	0.6	4.6	142	19.3	51.3	8.8
15/02/2021	20.4	15.1	24.6	20.5	16.5	24.0	68.9	48.7	98	242.9	1207.1	0.2	2.7	0.3	5.5	155	21.8	65.8	10.6
16/02/2021	21.6	18.1	26.9	21.6	18.3	26.3	79.8	50.8	100	282.7	1156.4	4.2	3.2	0.8	7.4	130	17.5	29.5	9.9
17/02/2021	21.2	17.9	25.3	21.1	18.2	24.8	72.9	45.3	100	253.5	1355.5	3.4	2.9	0.7	6.4	133	17.7	32.2	8.2
18/02/2021	20.4	16.8	24.0	20.5	17.4	23.5	80.2	58.6	100	154.7	926.4	14.0	2.2	0.8	5.4	137	17.0	53.3	7.6
19/02/2021	22.2	19.5	27.0	22.2	19.7	26.7	87.3	62.6	100	177.5	1313.6	5.2	1.9	0.6	4.6	140	22.5	81.1	9.3
20/02/2021	23.3	19.0	28.1	23.3	19.4	27.2	84.1	63.5	100	263.9	1552.2	0.0	1.9	0.0	4.3	127	22.1	87.2	6.8
21/02/2021	24.0	19.6	29.5	24.0	20.1	29.0	80.9	54.4	100	278.2	1264.8	0.0	1.8	0.2	4.2	137	18.8	64.0	8.7
22/02/2021	23.9	19.9	32.2	23.9	20.1	31.6	81.4	45.1	100	299.1	1105.7	9.6	1.0	0.0	4.4	196	35.2	101.1	7.7
23/02/2021	20.1	18.2	22.1	20.1	18.4	22.2	77.1	68.0	94	78.1	437.1	0.2	2.0	0.9	3.4	154	18.8	26.1	10.4
24/02/2021	19.2	17.4	21.3	19.1	17.3	21.3	84.4	74.1	99	83.3	602.2	3.2	2.0	0.6	4.1	153	18.2	28.2	11.5
25/02/2021	20.5	17.0	24.4	20.6	17.1	24.5	91.1	68.7	100	117.4	827.0	0.0	1.1	0.1	3.3	135	24.9	96.1	4.9
26/02/2021	23.8	14.9	33.9	23.9	15.6	33.4	71.9	32.2	100	337.4	1123.2	0.0	2.2	0.1	5.6	217	29.0	92.2	7.5
27/02/2021	22.3	19.9	25.7	22.3	19.9	25.2	87.3	73.0	100	91.7	704.5	0.4	1.4	0.3	3.8	148	22.9	55.6	8.4
28/02/2021	24.1	19.0	31.0	24.1	19.1	30.6	81.2	43.8	100	279.1	1214.0	0.0	1.5	0.0	4.9	145	28.3	97.9	5.9
	22.2	13.1	33.9	22.2	14.1	33.4	76.9	32.2	100	236.6	1552.2	130.4	1.9	0.0	7.4	152	22.9	101.1	4.5





**LEGEND**

- Mining Lease Boundary
- Air Quality Monitoring Sites (EPA #)
- Noise Monitoring Sites
- Sewage treatment / Discharge
- Weather Station
- HRSTS Discharge Point
- Mine Water Discharge
- Water Monitoring
- PREMISES BOUNDARY (EPL529)
- DCDB NOVEMBER 2019

Monitoring Points		
Pt	MGA94 E	MGA94 N
EPA4	313133.031	6393073.739
<b>EPA13</b>	<b>314128</b>	<b>6394541</b>
EPA14	312053.972	6390320.3
EPA15	304503.367	6398522.21
EPA16	305927.186	6399587.593
EPA17	312535.636	6393111.052
EPA19	311904	6391464
N16	306000	6399785
N20A	304461.208	6398713.723
N21	310491	6390223
N26	304172	6398160
<b>STP1</b>	<b>312283</b>	<b>6393069</b>
STP2	313294.559	6393531.856
STP3	313224.898	6393421.149
<b>STPD1</b>	<b>311812</b>	<b>6392935</b>
STPD2	313331.88	6393871.477
STPD3	313135	6393361

I, Malcolm Walker, Registered Mine Surveyor 8365,  
 Certify that to the best of my knowledge and belief that  
 the information on this plan is spatially correct

.....  
 Registered Mining Surveyor          Date

<p><b>WAMBO COAL PTY LIMITED</b>          ABN 13 000 668 057          Jerry's Plains Rd, Warkworth Phone: 02 65 702200          Via Singleton, NSW, 2330 Fax: 02 65 702290</p>		<p><b>Wambo mine</b>  <b>Environment Protection Licence 529</b>  <b>Plan of Premises- Monitoring Sites</b></p>			<p>Drawing No. <b>2672-2</b>          Revision No. J_26/11/2020          Sheet Size A3</p>			
Rev.	Drawn	Description	Approved	Date	Scale: 1: 45,000	Drawn MJW	Checked JB	Approved PJ
D	MJW	Water monitoring and discharge sites added						
E	MJW	Monitoring points except water monitoring added to coordinate table						
G	MJW	STPD3 Location amended						
H	MJW	EPA 13, STP 1, STPD1 & EPA 11 Locations amended	JB					
I	RE	Opencut related monitors removed	JB					



Prepared by NWU Survey Ph: 02 65 702318