

WAMBO COAL
POLLUTION MONITORING DATA
1 JULY 2024 – 31 JULY 2024

JULY MONTHLY REPORT

Published 09 August 2024

The following pollution monitoring data is published as a requirement of the Wambo Environmental Protection Licence (EPL) 529. A link to EPL529 can be found on the Environmental Protection Authority (EPA) Public Register. A link to the EPA's public register can be found at: <https://www.epa.nsw.gov.au/licensing-and-regulation/public-registers/about-prpoeo>

Monthly interim reports will be provided on a fortnightly basis until a final monthly report is produced when all monthly data is available.

The location of each sampling point is provided in 'Plan 2672-2' at the end of this document.

Monitoring Data

Surface and Mine Water Dam Monitoring

Monitoring Frequency: Once per month

Sampling Method: Grab sample

Limits: Nil

Table 1 - WCPL Surface and Mine Water Dam Results

EPL ID	Site ID	Date	pH	EC (µS/cm)	TSS (mg/L)	Comments
Point 24	SW01	29/07/2024	7.4	584	<5	
Point 25	SW02	29/07/2024	7.4	548	5	
Point 26	SW03	29/07/2024	7.3	555	<5	
Point 27	SW04	29/07/2024	-	-	-	DRY
Point 28	SW05	29/07/2024	-	-	-	No Flow
Point 29	SW06	29/07/2024	7.1	333	<5	
Point 30	SW07	29/07/2024	7.1	683	<5	
Point 31	SW08	29/07/2024	8.1	2030	<5	
Point 33	SW15	2/07/2024	9.1	4860	42	
Point 34	SW27a	29/07/2024	-	-	-	DRY
Point 36	SW32a	29/07/2024	-	-	-	DRY
Point 39	SW39	29/07/2024	-	-	-	No Flow
Point 40	SW40	29/07/2024	-	-	-	No Flow
Point 41	SW41	29/07/2024	-	-	-	No Flow
Point 42	SW54	-	-	-	-	DRY

Water Discharge Monitoring

Monitoring Frequency: Continuous during discharge (EC, pH, Turbidity)
 Daily during discharge (TSS, Volume)
 Sampling Method: In line instrumentation (EC, pH Turbidity)
 Grab sample (TSS)
 Limits: pH- 6.5 to 9.5
 TSS – 120
 Volume – 250ML/day
 Date sampled: Continuous
 Date obtained: Continuous

Table 2 - WCPL Discharge Monitoring

Site	Date	pH (Avg)	Conductivity (µS/cm) Avg	TSS (mg/L)	Turbidity (NTU)	Volume (ML/day)	Comments
Point 4	No Discharge in July						
Point 19	No Discharge in July						

Sewerage Treatment Monitoring

Monitoring Frequency: Quarterly during discharge
 Sampling Method: Grab sample
 Limits: Nil
 Date sampled: No Samples in July
 Date obtained: No Samples in July

Table 3- WCPL Discharge Monitoring

EPL ID	Site ID	Date	pH	Faecal Coliforms (CFU/100mL)	Comments
Point 43	STPD3	-	-	-	No discharge
Point 52	STPD2				Sample required Quarterly
Point 56	STP1	-	-	-	Sample required Quarterly

PM10 Monitoring

Monitoring Frequency: Continuous

Sampling Method: AM22

Limits: Nil

Date sampled: Continuous

Date obtained: Continuous

Table 4 - WCPL PM10 Results

Date	PM02 (D2)- Wambo Road (Caban) (EPA14)		PM03 (D4) - Thelander (EPA15)		PM04 (D1) - Muller (EPA16)		PM05 (D5) - Kelly (EPA 53)	
	PM10 24 Hour Result (ug/m ³)	Annual Average	PM10 24 Hour Result (ug/m ³)	Annual Average	PM10 24 Hour Result (ug/m ³)	Annual Average	PM10 24 Hour Result (ug/m ³)	Annual Average
1/07/2024	6.1	15.78	3.9	12.06	10.0	19.90	7.5	21.99
2/07/2024	5.4	15.77	2.8	12.05	9.3	19.88	9.3	21.98
3/07/2024	7.0	15.75	5.2	12.02	10.2	19.84	14.8	21.94
4/07/2024	8.8	15.75	7.0	12.01	18.4	19.85	24.8	21.97
5/07/2024	8.9	15.77	6.6	12.02	14.0	19.87	18.6	21.97
6/07/2024	6.2	15.77	4.7	12.03	16.3	19.91	15.0	21.98
7/07/2024	7.6	15.78	8.0	12.04	12.8	19.93	15.0	21.97
8/07/2024	8.5	15.78	12.1	12.06	14.4	19.95	9.8	21.94
9/07/2024	7.0	15.77	1.6	12.04	6.1	19.93	8.7	21.90
10/07/2024	4.9	15.76	1.4	12.04	4.8	19.93	8.7	21.87
11/07/2024	5.8	15.76	1.6	12.03	4.6	19.92	6.8	21.86
12/07/2024	6.7	15.73	2.7	12.02	5.4	19.89	8.8	21.84
13/07/2024	7.9	15.73	2.9	12.00	6.0	19.88	14.9	21.83
14/07/2024	6.0	15.71	3.6	11.99	5.2	19.86	14.3	21.79
15/07/2024	6.0	15.69	2.0	11.97	5.0	19.84	12.4	21.74
16/07/2024	5.7	15.68	2.3	11.95	5.4	19.81	18.8	21.74
17/07/2024	6.5	15.66	1.6	11.91	5.3	19.75	14.0	21.74
18/07/2024	7.6	15.65	4.0	11.90	7.1	19.74	27.3	21.76
19/07/2024	7.5	15.65	3.6	11.89	6.0	19.72	35.8	21.83
20/07/2024	9.8	15.64	5.5	11.88	11.5	19.72	52.3	21.87
21/07/2024	12.0	15.64	6.9	11.89	13.1	19.73	28.3	21.87
22/07/2024	9.2	15.65	5.2	11.88	9.7	19.71	23.9	21.89
23/07/2024	7.8	15.64	15.5	11.90	9.2	19.67	22.8	21.90
24/07/2024	6.4	15.63	15.2	11.93	6.4	19.64	30.8	21.94
25/07/2024	8.3	15.62	7.9	11.92	10.7	19.63	35.4	22.00
26/07/2024	7.6	15.61	4.0	11.91	8.0	19.62	9.0	21.96
27/07/2024	5.6	15.59	3.4	11.90	6.7	19.60	17.2	21.95
28/07/2024	3.3	15.56	1.2	11.84	4.0	19.57	8.9	21.88
29/07/2024	5.1	15.54	2.4	11.82	5.6	19.54	7.5	21.79
30/07/2024	6.3	15.53	3.1	11.81	6.5	19.52	12.5	21.74
31/07/2024	7.8	15.52	4.9	11.81	8.9	19.51	19.7	21.72

*NaN >75% of data collected during period

Meteorological Monitoring

Monitoring Frequency: Continuous

Sampling Method: Site Meteorological Station EPA17

Limits: Nil

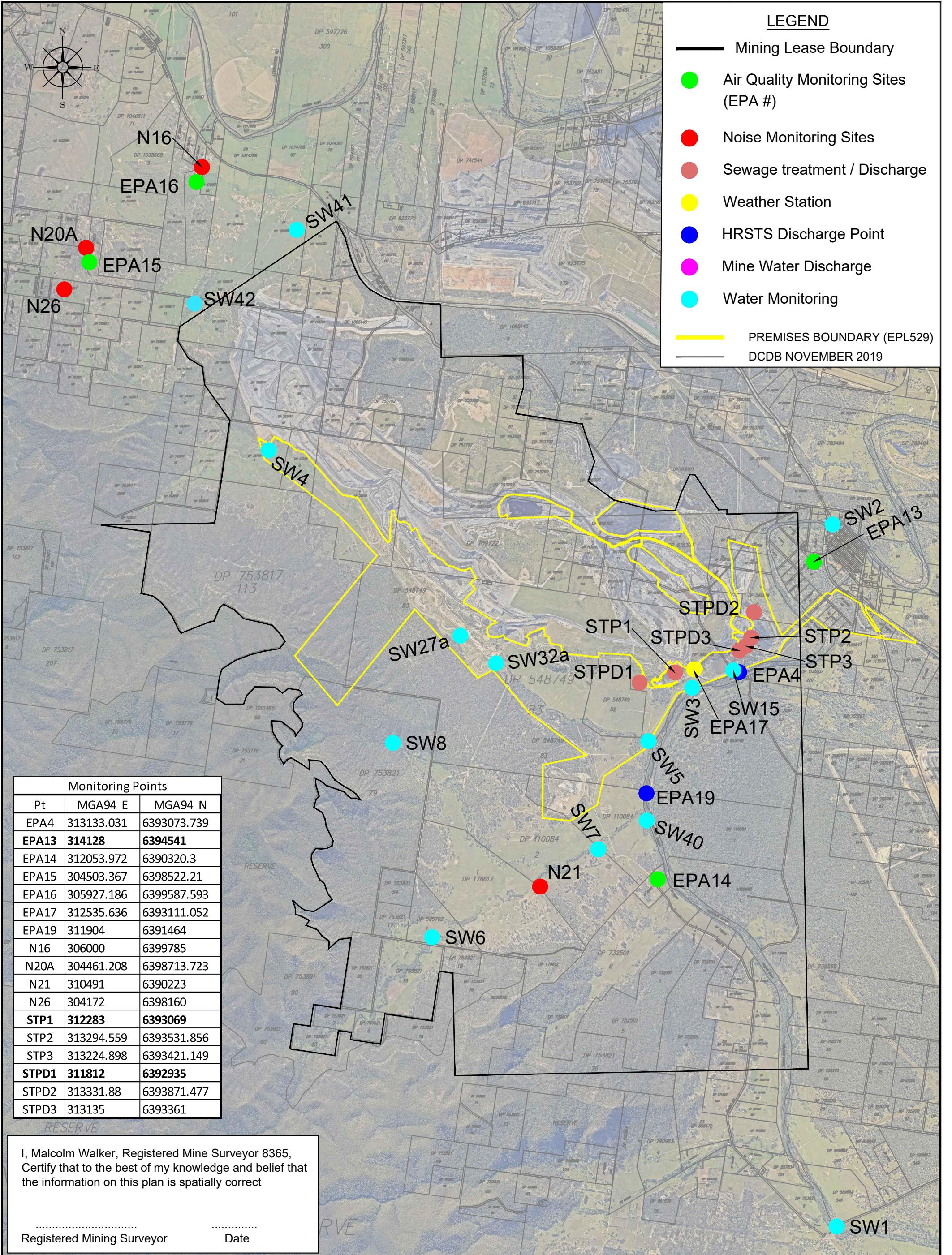
Date sampled: continuous

Date obtained: continuous

Table 5 - WCPL Meteorology

Date	Temperature (2m)			Temperature (10m)			Humidity			Solar Radiation		RAIN	Wind Speed at 10m			Wind Direction at 10m	Sigma Theta		
	Average	Min	Max	Average	Min	Max	Average	Min	Max	Average	Max	Sum (mm)	Average	Min	Max	Average	Average	Max	Min
1/07/2024	11.8	9.3	15.3	11.9	10.0	14.9	77.4	57.7	100.0	123.4	453.6	1.2	1.8	0.2	4.5	155.4	19.0	62.6	5.9
2/07/2024	11.2	7.7	14.5	11.3	8.6	14.2	88.8	68.4	100.0	57.7	329.5	1.6	1.8	0.1	4.0	149.5	18.6	88.2	8.6
3/07/2024	12.5	9.5	16.3	12.5	10.1	16.1	77.0	53.6	96.2	86.2	459.1	0.0	2.1	1.1	4.9	149.1	17.7	29.1	10.2
4/07/2024	12.3	8.7	17.0	12.6	9.7	16.4	77.8	48.0	100.0	73.5	457.1	0.0	2.0	0.9	4.7	131.6	16.7	30.0	6.8
5/07/2024	11.8	7.2	16.3	12.3	8.2	16.0	87.2	65.2	100.0	70.8	423.4	0.6	1.6	0.3	3.8	136.7	18.4	70.7	8.0
6/07/2024	12.3	9.2	17.2	12.5	9.7	16.8	82.8	48.1	100.0	85.6	435.6	0.6	2.0	0.1	4.5	139.2	17.2	50.8	4.4
7/07/2024	11.1	4.6	17.3	11.5	5.2	16.5	91.5	61.2	100.0	67.7	489.2	0.8	1.0	0.0	3.1	142.5	26.1	87.5	5.4
8/07/2024	13.0	11.3	16.0	13.0	11.5	15.8	96.0	76.5	100.0	40.6	264.8	1.4	0.7	0.1	1.8	151.9	29.5	95.0	6.4
9/07/2024	13.1	7.9	18.8	13.5	9.8	18.2	90.7	62.8	100.0	63.0	470.8	7.8	1.0	0.1	3.4	207.4	28.9	87.8	6.4
10/07/2024	10.7	3.2	17.4	11.2	3.7	16.9	81.6	55.4	100.0	107.4	425.3	0.0	1.9	0.1	4.7	245.9	29.4	89.9	8.8
11/07/2024	9.0	2.1	16.4	9.4	2.6	16.1	89.1	54.9	100.0	91.6	436.3	0.0	1.0	0.1	2.7	233.3	27.1	88.4	7.2
12/07/2024	10.0	4.2	17.5	10.4	4.5	17.1	87.7	56.9	100.0	88.3	449.8	0.0	1.2	0.0	3.8	237.9	32.1	99.0	8.3
13/07/2024	11.5	6.9	17.5	12.0	7.7	16.8	77.6	49.1	100.0	86.7	504.7	0.0	1.3	0.1	3.4	239.2	39.9	97.8	13.7
14/07/2024	10.2	2.9	16.3	10.4	5.7	15.8	68.4	41.9	100.0	104.7	410.7	0.0	2.8	0.1	5.1	289.8	26.7	80.9	14.0
15/07/2024	9.8	7.0	14.4	9.7	7.3	13.9	64.0	38.5	83.7	108.0	435.4	0.0	3.3	1.9	5.1	310.0	22.2	33.9	12.9
16/07/2024	9.9	7.7	12.1	9.9	7.8	11.9	68.5	56.5	75.8	51.3	277.5	0.0	4.0	2.1	6.6	303.0	24.2	41.4	16.2
17/07/2024	12.5	9.0	17.0	12.4	10.1	16.3	68.0	52.8	83.6	98.8	462.5	0.0	3.1	0.0	5.2	291.1	25.2	96.6	13.6
18/07/2024	11.4	3.9	17.6	11.6	4.9	16.8	70.2	47.4	100.0	112.6	496.6	0.0	2.4	0.1	5.4	264.6	31.3	86.5	15.6
19/07/2024	9.7	1.1	15.0	10.3	2.4	14.8	63.3	41.6	100.0	115.2	446.7	0.0	3.1	0.2	6.1	290.0	25.6	88.4	8.0
20/07/2024	13.1	10.1	16.6	13.1	10.2	16.2	51.6	32.0	74.3	105.8	446.3	0.0	4.8	1.6	8.9	289.8	21.3	43.6	14.1
21/07/2024	11.0	3.4	18.1	11.4	5.2	17.8	57.5	31.6	99.9	116.3	449.6	0.0	2.7	0.2	5.8	274.3	25.3	85.8	12.9
22/07/2024	8.9	0.2	18.1	9.9	1.8	17.7	80.2	44.8	100.0	110.8	432.5	0.0	1.3	0.1	4.0	223.7	34.8	89.0	9.8
23/07/2024	8.5	0.3	19.2	9.4	1.6	18.6	80.9	41.1	100.0	115.8	446.0	0.0	1.3	0.0	4.1	226.7	31.3	100.0	6.5
24/07/2024	8.5	-0.8	20.0	9.2	0.1	19.7	77.5	33.1	100.0	117.3	458.7	0.0	1.2	0.1	3.9	242.5	26.2	92.1	5.8
25/07/2024	11.7	2.7	21.7	12.6	3.2	21.3	78.3	45.1	100.0	104.6	517.9	0.0	1.7	0.1	6.0	233.2	29.6	88.1	4.7
26/07/2024	13.3	7.0	20.6	13.8	8.1	20.3	85.0	49.0	100.0	107.6	476.8	4.4	1.6	0.2	4.2	220.7	24.8	85.8	6.6
27/07/2024	11.6	6.2	16.5	11.9	6.8	16.3	97.5	81.7	100.0	37.6	345.5	15.2	1.1	0.0	3.1	226.3	33.5	100.6	9.4
28/07/2024	10.9	7.4	14.7	11.1	7.7	14.3	63.4	32.1	100.0	123.9	486.0	0.0	3.0	0.1	6.0	294.5	23.2	77.1	11.4
29/07/2024	8.7	3.5	16.1	9.0	4.9	15.6	63.5	33.4	97.9	122.8	479.2	0.0	2.2	0.2	4.7	258.5	26.9	74.2	12.0
30/07/2024	9.0	2.7	14.8	10.0	3.9	14.6	69.3	46.9	100.0	76.4	435.7	0.0	1.5	0.1	3.7	171.8	33.3	92.4	10.0
31/07/2024	9.2	3.5	16.2	10.5	4.9	15.9	76.8	44.1	100.0	104.0	518.7	0.0	1.4	0.0	3.9	161.6	35.6	100.4	10.1
Total	10.8	-0.8	21.7	11.2	0.1	21.3	77.2	31.6	100	91.6	518.7	33.6	1.9	0	8.9	221.3	26.6	110.6	4.4

This page is intentionally left blank.



LEGEND

- Mining Lease Boundary
- Air Quality Monitoring Sites (EPA #)
- Noise Monitoring Sites
- Sewage treatment / Discharge
- Weather Station
- HRSTS Discharge Point
- Mine Water Discharge
- Water Monitoring
- PREMISES BOUNDARY (EPL529)
- DCDB NOVEMBER 2019

Monitoring Points		
Pt	MGA94 E	MGA94 N
EPA4	313133.031	6393073.739
EPA13	314128	6394541
EPA14	312053.972	6390320.3
EPA15	304503.367	6398522.21
EPA16	305927.186	6399587.593
EPA17	312535.636	6393111.052
EPA19	311904	6391464
N16	306000	6399785
N20A	304461.208	6398713.723
N21	310491	6390223
N26	304172	6398160
STP1	312283	6393069
STP2	313294.559	6393531.856
STP3	313224.898	6393421.149
STPD1	311812	6392935
STPD2	313331.88	6393871.477
STPD3	313135	6393361

I, Malcolm Walker, Registered Mine Surveyor 8365,
 Certify that to the best of my knowledge and belief that
 the information on this plan is spatially correct

.....
 Registered Mining Surveyor Date