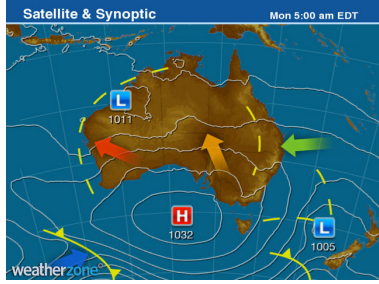


General Weather Overview



**Synoptic Overview:** High pressure to the south of the country will extend a ridge up the New South Wales coast over the next few days. A southerly change runs up the coast on Sunday and behind this change moisture levels being to increase. A trough develops over the region on Wednesday before moving offshore on Thursday.

**Monday:** Mostly cloudy over eastern areas with a moderate chance of showers. Partly cloudy over western areas with a low chance of showers. Mild with light E/SE winds.

**Tuesday:** Mostly cloudy and mild with a moderate chance of a few showers in the morning/afternoon and a high chance in the evening. Light NE winds.

**Wednesday:** Moderate chance of early morning fog. Mostly cloudy with rain, potentially heavy at times (most likely in the afternoon). Storms are a low-to-moderate risk. Light E/ESE winds.

**Thursday:** Moderate chance of fog in the west, slight chance in the east. Mostly cloudy with a moderate-to-high chance of rain during the morning, grading to a low chance by the evening. Slight chance of storms in the morning. Light-to-moderate E/ESE winds.

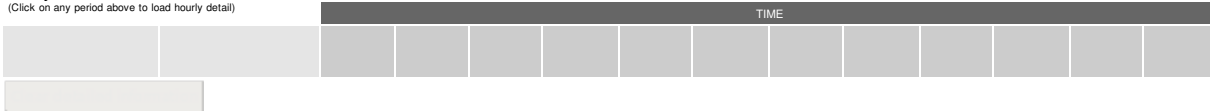
**Further Ahead:** Fog is risk each morning between Friday and Sunday, more likely in the west. Showers are likely in the east on Friday and a moderate chance in the west. Showers are chance throughout the weekend. Light-to-moderate SE/ESE winds each day.

Operational Forecast Summary

|       |   | Today 23 Mar |    | Tue 24 Mar |    | Wed 25 Mar |    | Thu 26 Mar |    | Fri 27 Mar |    | Sat 28 Mar |    | Sun 29 Mar |    |
|-------|---|--------------|----|------------|----|------------|----|------------|----|------------|----|------------|----|------------|----|
|       |   | AM           | PM | AM         | PM | AM         | PM | AM         | PM | AM         | PM | AM         | PM | AM         | PM |
| Wambo | Noise Risk Wambo - Risk of Class G Conditions | D            | E  | F          | E  | F          | E  | F          | E  | F          | E  | F          | E  | F          | E  |
| Wambo | Fog Risk                                      |              |    |            |    |            |    |            |    |            |    |            |    |            |    |
|       | Rainfall Risk - Moderate to Heavy             |              |    |            |    |            |    |            |    |            |    |            |    |            |    |
|       | Dust Risk                                     |              |    |            |    |            |    |            |    |            |    |            |    |            |    |

Hourly Detail

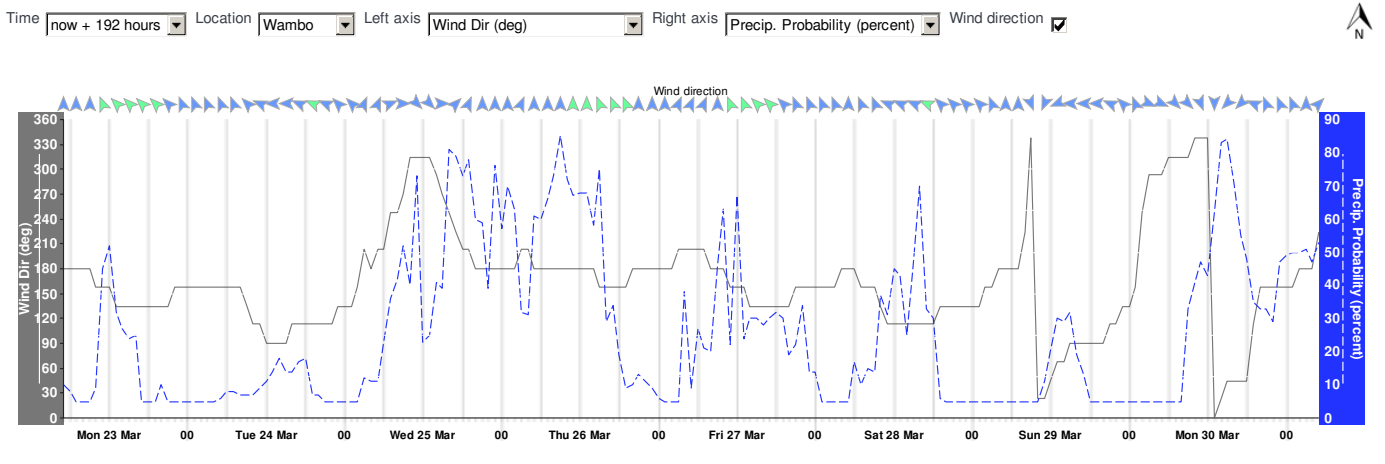
(Click on any period above to load hourly detail)



Legend

- No significant impact on operations
- Moderate impact on operations
- High impact on operations

Opticast two

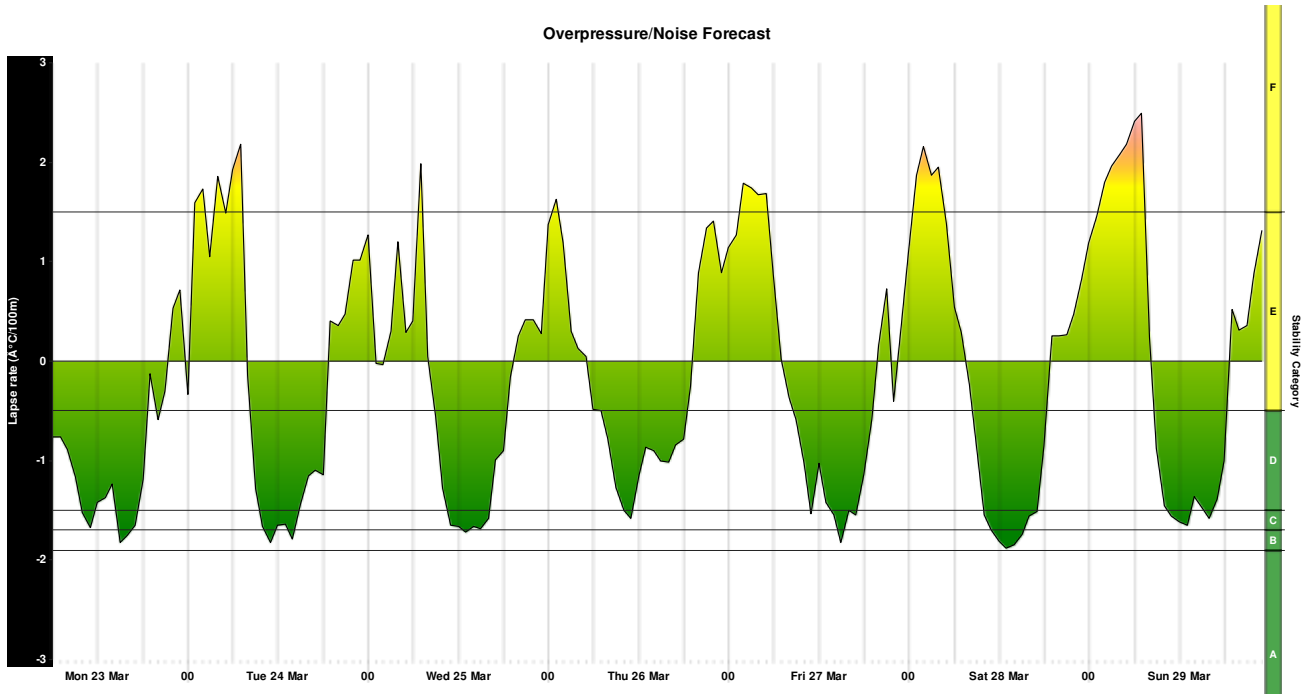


Detailed Forecast for WAMBO (climate data from CESSNOCK AIRPORT AWS)

| Week 1            | Monday 23 Mar |        | Tuesday 24 Mar |        | Wednesday 25 Mar |       | Thursday 26 Mar |        | Friday 27 Mar |        | Saturday 28 Mar    |        | Sunday 29 Mar |       | Monday 30 Mar   |
|-------------------|---------------|--------|----------------|--------|------------------|-------|-----------------|--------|---------------|--------|--------------------|--------|---------------|-------|-----------------|
| summary           | Showers       |        | Mostly cloudy  |        | Thunderstorms    |       | Rain            |        | Showers       |        | Showers increasing |        | Late shower   |       | Possible shower |
| maximum           | 22°C -5       |        | 23°C -4        |        | 24°C -4          |       | 20°C -7         |        | 23°C -4       |        | 25°C -2            |        | 27°C +0       |       | 26°C -2         |
| error bounds      | 17 - 27°C     |        | 18 - 28°C      |        | 19 - 29°C        |       | 15 - 25°C       |        | 18 - 28°C     |        | 20 - 30°C          |        | 22 - 32°C     |       | 21 - 31°C       |
| minimum           | 17°C +3       |        | 16°C +2        |        | 16°C +1          |       | 17°C +2         |        | 16°C +1       |        | 16°C +1            |        | 15°C +1       |       | 16°C +1         |
| error bounds      | 12 - 22°C     |        | 11 - 21°C      |        | 11 - 21°C        |       | 12 - 22°C       |        | 11 - 21°C     |        | 11 - 21°C          |        | 10 - 20°C     |       | 11 - 21°C       |
| chance of rain    | 50%           |        | 40%            |        | 90%              |       | 80%             |        | 70%           |        | 80%                |        | 40%           |       | 80%             |
| likely amount     | < 1mm         |        | < 1mm          |        | 10-20mm          |       | 1-5mm           |        | 1-5mm         |        | < 1mm              |        | < 1mm         |       | 1-5mm           |
|                   | 9am           | 3pm    | 9am            | 3pm    | 9am              | 3pm   | 9am             | 3pm    | 9am           | 3pm    | 9am                | 3pm    | 9am           | 3pm   |                 |
| feels like        | 18°C          | 21°C   | 19°C           | 23°C   | 20°C             | 26°C  | 18°C            | 19°C   | 19°C          | 23°C   | 20°C               | 25°C   | 21°C          | 28°C  |                 |
| relative humidity | 69%           | 61%    | 75%            | 59%    | 84%              | 68%   | 88%             | 75%    | 85%           | 69%    | 84%                | 61%    | 82%           | 52%   |                 |
| wind direction    | S             | SE     | SE             | E      | W                | W     | S               | SSE    | S             | SE     | SSE                | ESE    | NNW           | E     |                 |
| wind speed        | 10 kph        | 14 kph | 7 kph          | 11 kph | 2 kph            | 6 kph | 11 kph          | 15 kph | 8 kph         | 14 kph | 5 kph              | 11 kph | 1 kph         | 6 kph |                 |
| sun hours         | 5.4           |        | 3.9            |        | 6.0              |       | 4.7             |        | 6.8           |        | 6.0                |        | 8.8           |       | 5.5             |

Location **Wambo** From **2020-03-22** To **2020-03-29**

Overpressure/Noise Forecast



Boundary Layer Height(m)/Boundary Layer Height(ft)

