

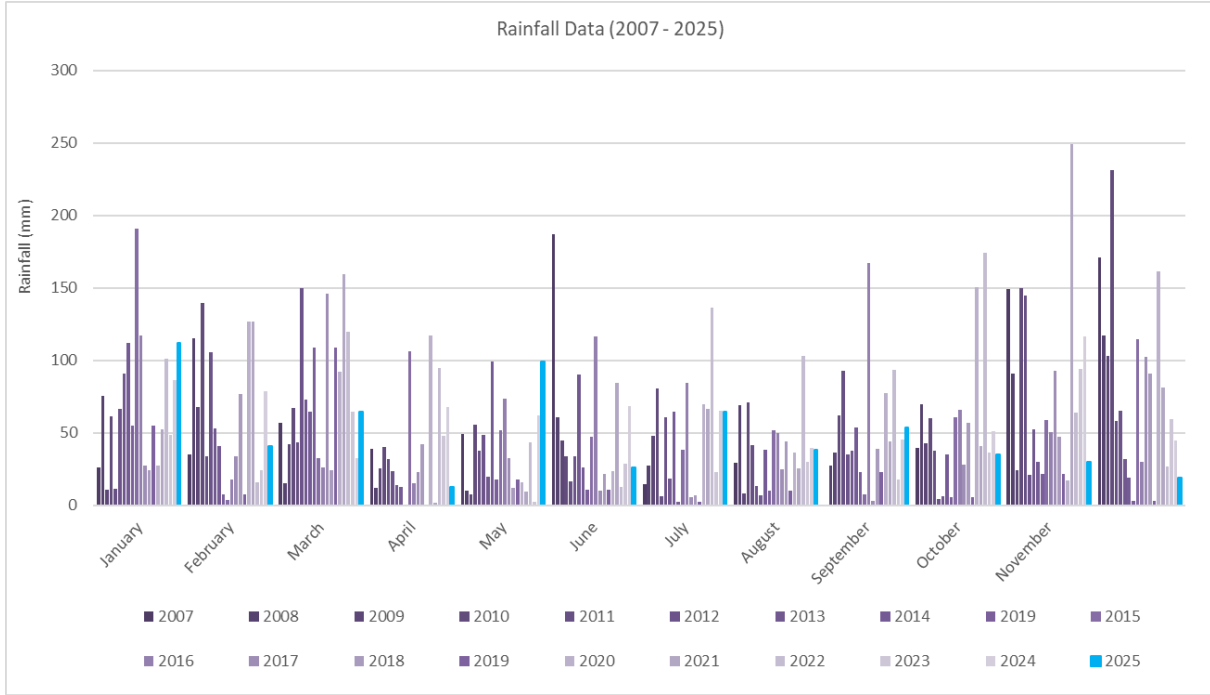
APPENDIX 3
ENVIRONMENTAL
PERFORMANCE

APPENDIX 3A
METEOROLOGICAL
MONITORING DATA

2025 Summary of Rainfall Data

	Year	Jan	Feb	Mar	Apr	May	Jun	Jul	Aug	Sep	Oct	Nov	Dec
Rainfall (mm)	2025	111.8	41.2	64.4	12.8	99	26.4	64.8	38.2	53.8	35.2	29.8	19.4
Cumulative Rainfall (mm)	2025	111.8	153	217.4	230.2	329.2	355.6	420.4	458.6	512.4	547.6	577.4	596.8

Historical Rainfall Data 2007-2025



2025 Summary of Temperature Data

2025	Air Temperature (°C at 2 m)			Air Temperature (°C at 10 m)			Air Temperature (°C at 60 m)		
	Min	Max	Mean	Min	Max	Mean	Min	Max	Mean
January	11.2	39.2	23.6	11.4	38.4	23.5	12.4	37.5	22.9
February	8.6	36.7	23.3	9.6	35.3	23.2	10.8	34.5	26.9
March	14.9	37.2	22.6	14.9	35.8	22.5	14.5	34.5	22.1
April	5.7	29.6	17.2	6.7	28.8	17.5	8.2	27.6	17.6
May	4.0	25.4	13.8	4.7	23.9	14.0	5.7	23.1	14.1
June	-2.9	21.5	8.1	-2.0	20.5	8.5	-0.7	19.2	8.9
July	-2.7	21.1	8.7	-2.4	20.1	9.0	-1.4	18.9	9.3
August	-1.7	24.2	10.4	-1.0	23.1	10.6	-0.2	21.7	10.8
September	0.9	30.3	10.0	1.8	29.4	14.0	2.9	28.4	10.7
October	3.3	35.3	18.4	4.6	33.9	18.5	6.7	32.8	18.6
November	3.8	37.2	20.8	5.3	36.3	20.7	6.7	35.1	20.6
December	6.6	39.9	23.2	7.2	38.4	23.0	8.1	37.3	24.9

Historical Rainfall Data (mm) 2006-2024

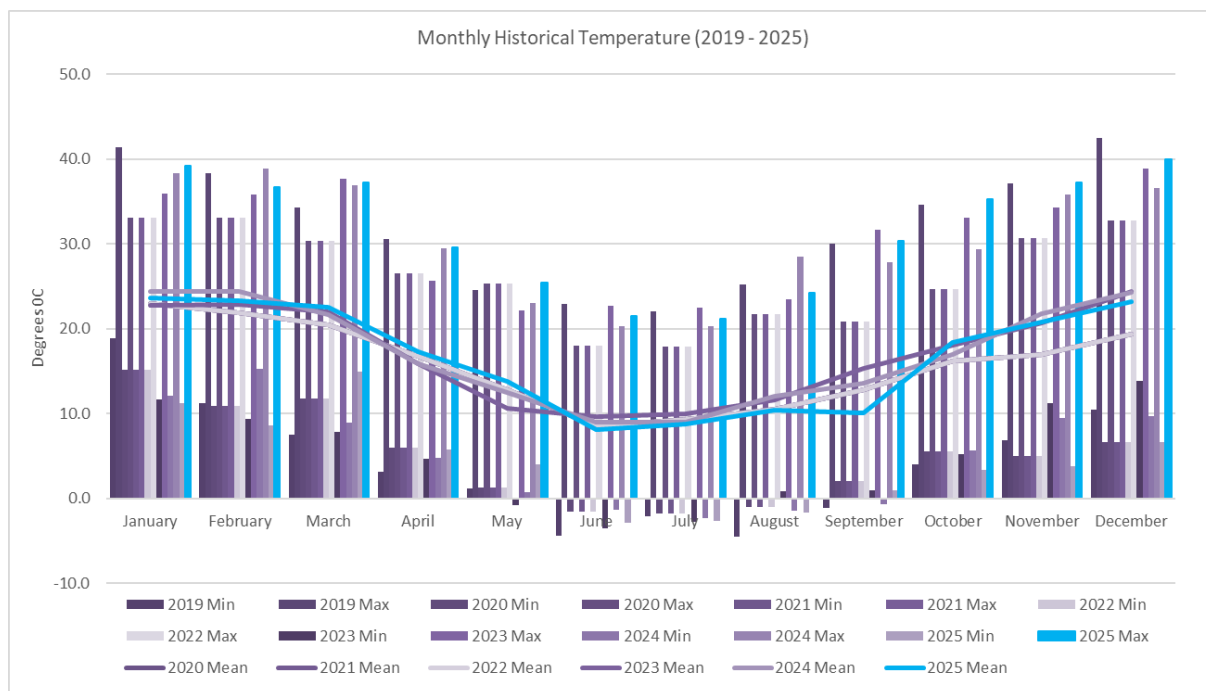
Monthly	2006	2007	2008	2009	2010	2011	2012	2013	2014	2015	2016	2017	2018	2019	2020	2021	2022	2023	2024	2025	Monthly Average (mm)
January	67	26.2	75.8	10.6	61.4	11.4	66.8	91.2	86.6	190.8	117.4	27.8	24.4	54.8	27.2	52.6	101.4	48.6	86.6	111.8	66.0
February	76.6	35	115.2	67.8	139.8	33.6	105.6	53	70.4	3.6	17.8	34.2	77	7.4	127	126.6	16.0	24.6	78.6	41.2	62.1
March	9.2	57.2	15.6	42.2	67.2	43.4	150	73	32.8	32.4	26.4	146	24.6	108.8	92	159.8	119.8	64.6	32.8	64.4	70.0
April	20.8	38.8	12.4	25.4	40.6	32	23.8	13.8	67.8	106	15.4	23	42.2	0	117	1.8	95.0	47.8	67.8	12.8	38.8
May	0.8	49.2	10.4	7.4	56	38	48.8	20	62.2	52	73.4	32.4	12.4	17.6	16	9.4	43.6	2.8	62.2	99	34.3
June	37.2	186.8	61	44.8	34	16.6	34.2	90.6	68.6	47.4	116.6	10.4	21.6	10.6	23.4	84.4	13.0	28.8	68.6	26.4	50.3
July	51	14.6	27.8	48	81	6.2	60.6	18.6	65	38.2	84.8	5.8	6.8	2.6	70	66.8	136.4	23.2	65	64.8	45.9
August	7	29.2	69.4	8.2	70.8	41.8	13.4	6.8	39.8	52	50	25.2	44.4	10.2	36.4	25.4	103.2	29.8	39.8	38.2	36.9
September	15.6	0.2	27.8	36.2	62.4	92.8	35.4	38	45.4	7.8	167.2	3	39	23	77.2	44.2	93.8	18.0	45.4	53.8	46.4
October	1.8	39.4	70	43	60	38	4.2	6.6	51	60.8	65.8	28.4	56.8	5.6	150.6	40.8	174.4	36.2	51	35.2	51.0
November	70	149.2	91	24.2	150	145	20.8	52.8	161.6	59	50.8	92.6	47.4	22	17.4	249.2	64.0	94.0	116.6	29.8	81.4
December	NA	171.2	117.4	103.2	231.2	58	65.6	31.8	45	114.4	30	102.6	91.2	3	161.6	81.4	26.6	59.6	45	19.4	84.1
Total	357	797	693.8	461	1054.4	556.8	629.2	496.2	796.2	764.4	815.6	531.4	487.8	265.6	915.8	942.4	987.2	478.0	759.4	596.8	-

Historical Temperature Data (°C) 2013-2024

	2013			2014			2015			2016			2017			2018		
	Min	Max	Mean	Min	Max	Mean	Min	Max	Mean	Min	Max	Mean	Min	Max	Mean	Min	Max	Mean
January	14.3	41.9	25.6	12.5	41.8	24.8	10.0	34.9	22.9	11.8	37.9	22.7	16.0	41.6	26.4	11.6	40.1	25.9
February	10.4	34.2	22.0	19.2	20.9	30.4	12.5	34.6	22.9	11.1	37.8	23.6	7.7	43.7	25.9	12.5	38.0	23.9
March	9.3	31.4	20.5	7.5	29.6	20.1	6.6	35.8	21.6	8.9	35.0	22.2	9.7	33.3	21.7	6.7	35.8	21.9
April	4.0	28.8	16.2	3.6	30.0	16.9	4.0	29.6	16.3	7.6	32.9	18.5	3.0	26.4	15.3	6.0	31.8	19.1
May	0.2	27.1	12.4	1.2	26.3	12.2	1.4	24.3	13.0	-1.4	26.5	13.3	-4.0	23.4	12.3	-4.8	24.7	12.4
June	-0.2	18.7	10.0	-0.9	19.6	9.9	-1.6	19.0	9.2	-2.1	18.8	10.0	-2.5	19.1	9.5	-2.1	19.9	9.2
July	-2.2	20.3	9.6	-3.7	21.3	8.0	-2.2	16.5	7.6	-2.4	21.7	10.0	-4.0	23.5	7.7	-4.8	22.8	8.7
August	1.6	25.0	12.9	-3.1	20.6	9.8	-1.3	23.3	9.9	-0.9	22.1	9.7	-3.1	24.6	9.6	-2.5	22.1	9.6
September	2.0	30.0	15.2	-0.2	29.7	13.6	0.4	25.5	12.8	1.8	21.7	12.7	-1.6	33.7	14.1	1.1	28.4	13.7
October	1.5	33.6	17.7	1.6	35.9	18.8	7.0	33.8	19.4	2.6	29.4	15.0	3.2	31.8	19.0	5.9	31.7	18.0
November	5.9	35.2	19.6	6.9	41.9	22.7	10.3	37.8	21.4	4.4	34.2	19.6	6.3	31.9	21.2	8.4	34.2	21.2
December	5.1	38.5	23.1	11.1	35.0	22.6	12.0	36.1	22.7	8.6	37.4	24.1	10.7	37.6	23.9	11.3	37.6	24.0
	2019			2020			2021			2022			2023			2024		
	Min	Max	Mean	Min	Max	Mean	Min	Max	Mean	Min	Max	Mean	Min	Max	Mean	Min	Max	Mean
January	18.9	41.4	27.8	16.0	41.5	26.2	10.9	35.7	22.5	15.1	33.1	22.9	11.6	35.9	22.7	12.1	38.3	24.4
February	11.2	38.3	24.1	10.4	40.4	22.3	11.6	32.1	21.6	10.9	33.1	21.8	9.4	35.8	22.9	15.3	38.9	24.4
March	7.5	34.3	22.1	7.5	33.6	19.2	10.0	31.8	19.5	11.8	30.3	20.5	7.8	37.6	22.0	8.9	36.9	21.7
April	3.1	30.6	17.5	5.6	26.6	16.0	1.3	27.1	14.8	6.0	26.5	16.7	4.7	25.6	15.9	4.8	29.5	15.8
May	1.2	24.5	12.2	0.0	23.2	11.3	-0.8	23.0	11.9	1.3	25.3	12.8	-0.8	22.1	10.6	0.7	23.0	12.4
June	-4.4	22.9	9.3	0.3	19.6	9.9	0.3	21.2	9.3	-1.6	18.0	8.5	-3.5	22.7	9.6	-1.4	20.3	9.0
July	-2.1	22.0	9.9	-0.5	20.4	9.4	-3.0	20.6	8.7	-1.8	17.9	9.3	-2.8	22.5	9.9	-2.3	20.3	9.0
August	-4.5	25.2	9.8	-1.5	21.1	9.6	-0.2	24.9	10.6	-1.0	21.7	10.5	0.8	23.5	11.6	-1.5	28.5	12.1
September	-1.1	30.0	14.3	2.5	26.5	14.0	1.3	26.3	13.2	2.0	20.8	12.8	0.9	31.6	15.3	-0.7	27.8	13.5
October	4.0	34.6	19.0	4.4	29.9	17.3	5.1	31.2	15.9	5.5	24.6	16.2	5.2	33.1	18.0	5.6	29.3	17.0
November	6.8	37.1	21.9	8.5	38.2	20.9	8.0	28.5	17.8	5.0	30.7	17.0	11.2	34.3	20.7	9.5	35.8	21.7
December	10.4	42.5	25.3	9.6	40.2	20.9	8.3	33.7	21.2	6.6	32.7	19.3	13.8	38.9	24.4	9.7	36.6	24.3

	2025																	
	Min	Max	Mean	Min	Max	Mean	Min	Max	Mean	Min	Max	Mean	Min	Max	Mean	Min	Max	Mean
January	11.4	38.4	23.5															
February	9.6	35.3	23.2															
March	14.9	35.8	22.5															
April	6.7	28.8	17.5															
May	4.7	23.9	14.0															
June	-2.0	20.5	8.5															
July	-2.4	20.1	9.0															
August	-1.0	23.1	10.6															
September	1.8	29.4	14.0															
October	4.6	33.9	18.5															
November	5.3	36.3	20.7															
December	7.2	38.4	23.0															

Historical Temperature 2017-2025



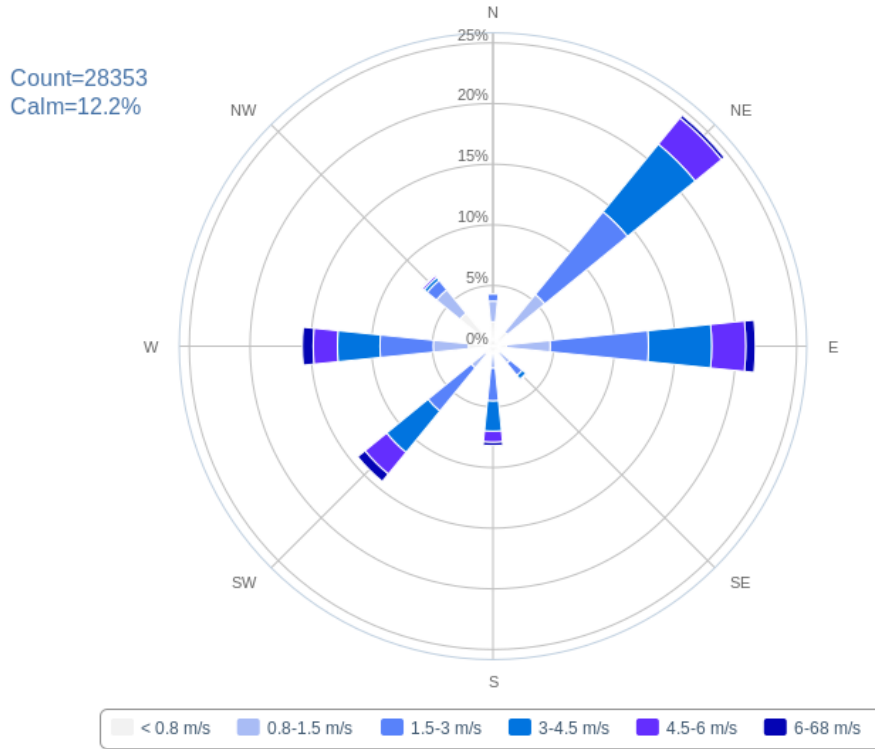
2025 Average Wind Speeds & Directions

2025	Ave Wind Speed (m/s)	Max Wind Speed (m/s)	Ave Wind Direction (°)
January	2.0	5.8	118.29
February	1.9	4.8	94.82
March	2.3	4.9	100.39
April	1.4	4.1	121.93
May	1.7	4.5	109.74
June	1.3	4.1	186.42
July	1.4	4.4	153.35
August	1.7	4.8	136.74
September	1.6	5.3	242.37
October	1.7	5.5	203.68
November	2.0	6.3	213.77
December	2.0	5.8	165.94

Annual Wind Rose 2025

Wind Rose Chart

SX34 - Wilpinjong Coal -M4 Period: (2025-01-01 to 2026-01-01) [15mins interval]

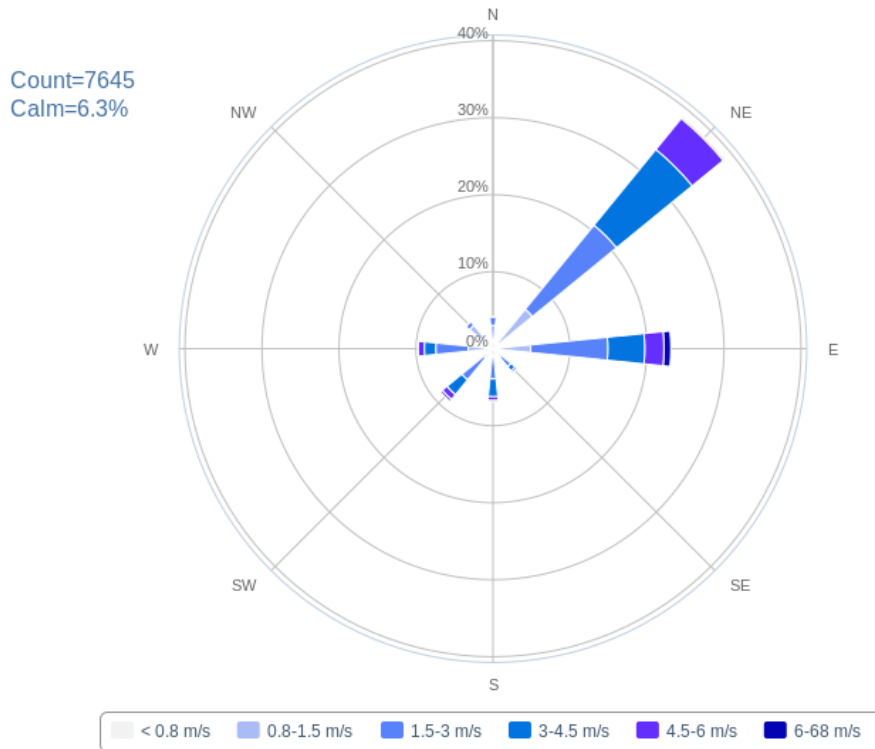


Novecom.com.au

Summer Wind Rose December 2024 - February 2025

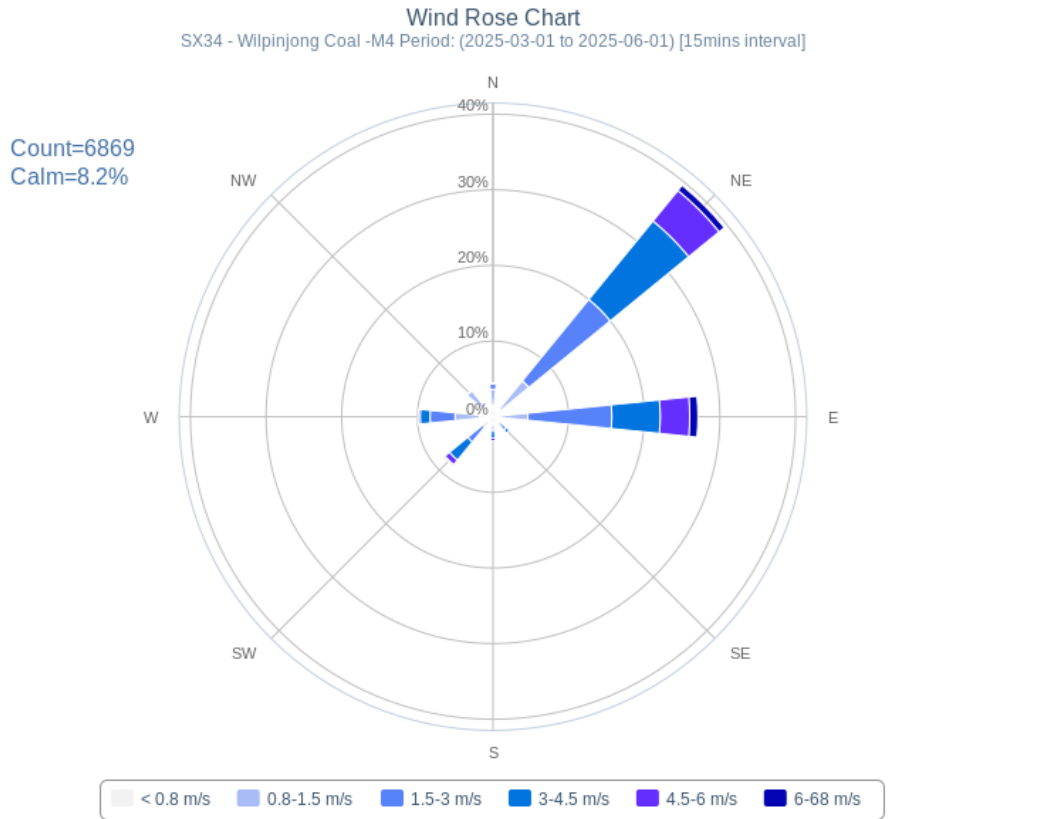
Wind Rose Chart

SX34 - Wilpinjong Coal -M4 Period: (2024-12-01 to 2025-03-01) [15mins interval]

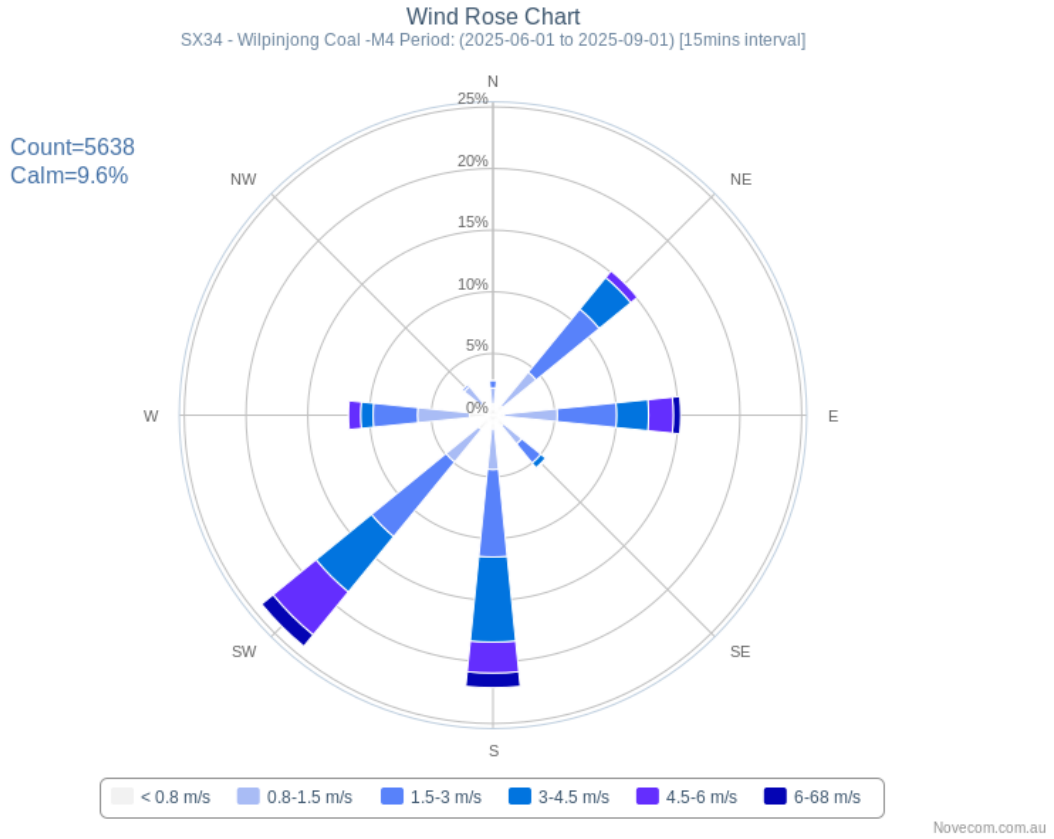


Novecom.com.au

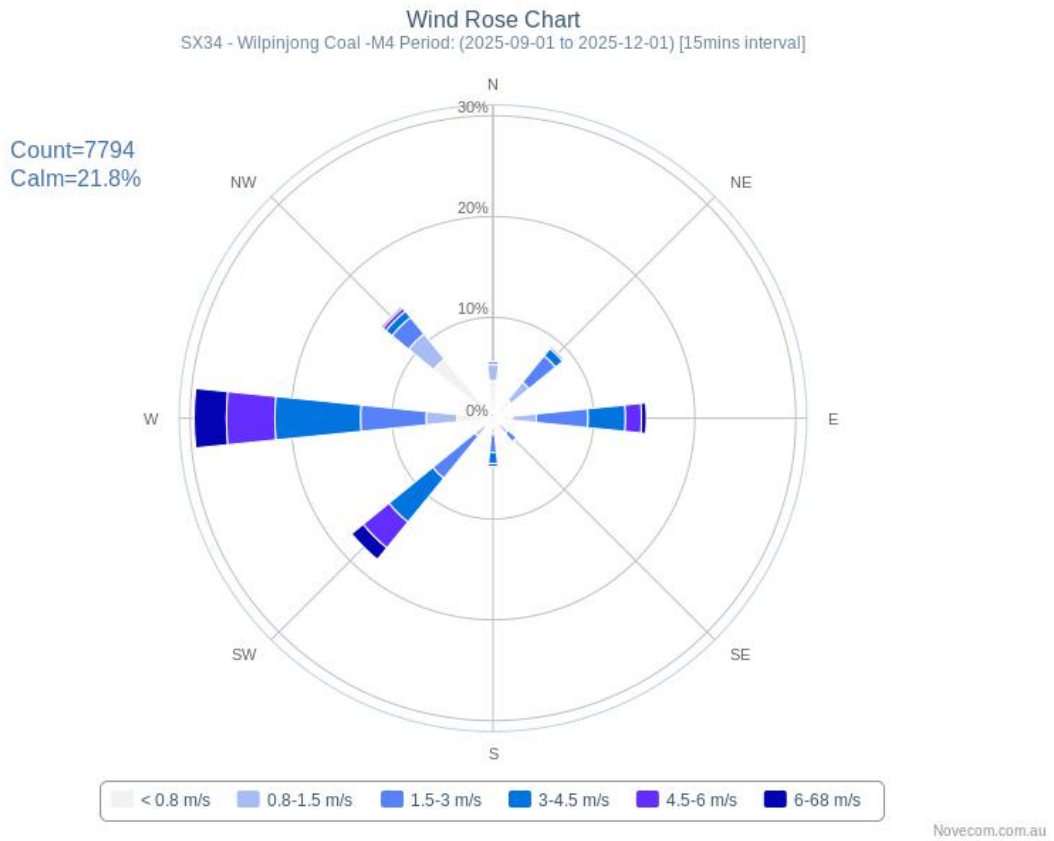
Autumn Wind Rose 2025



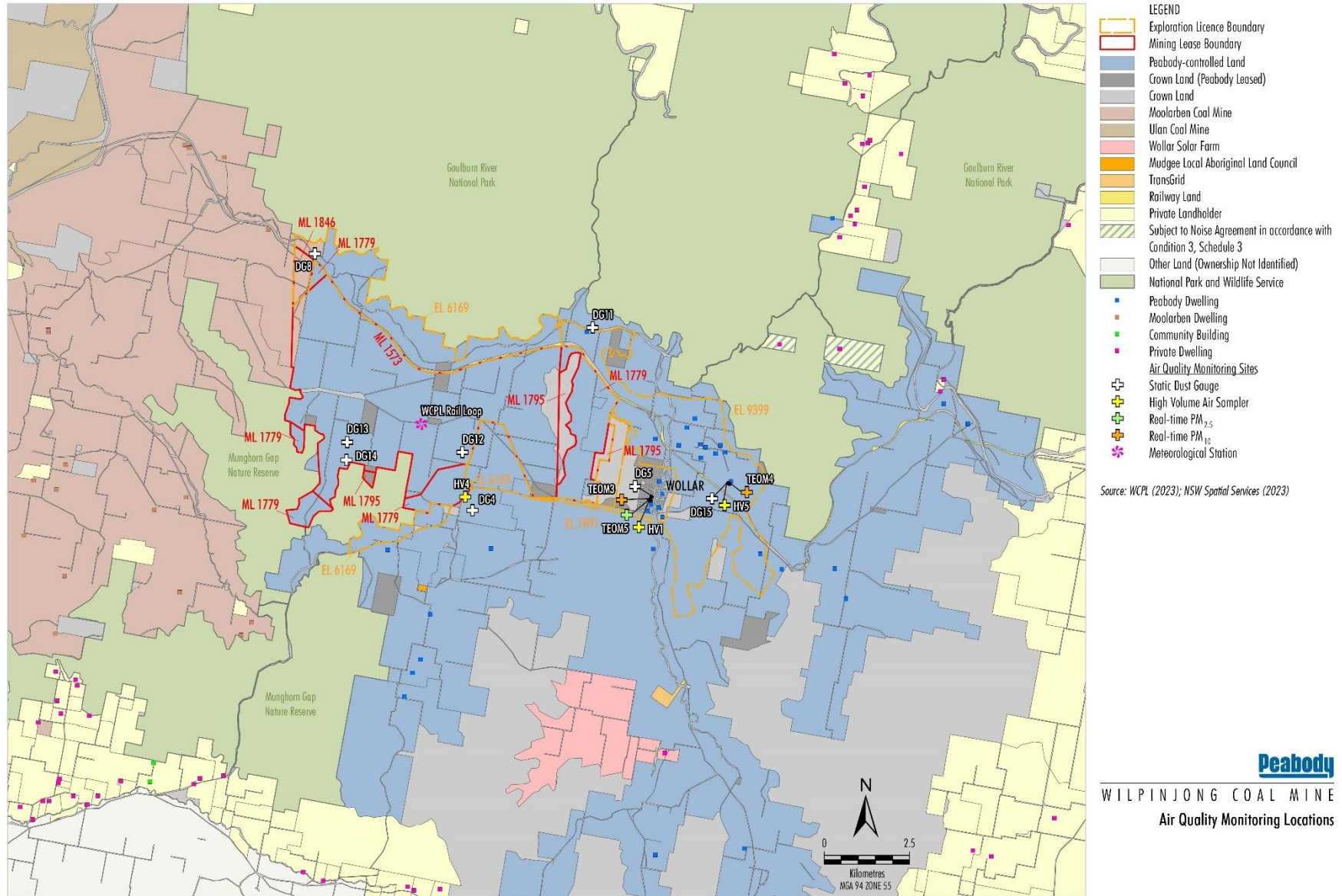
Winter Wind Rose 2025



Spring Wind Rose 2025



Location of WCPL’s Meteorological Station



WIL-12-11_EMS 2023_2024