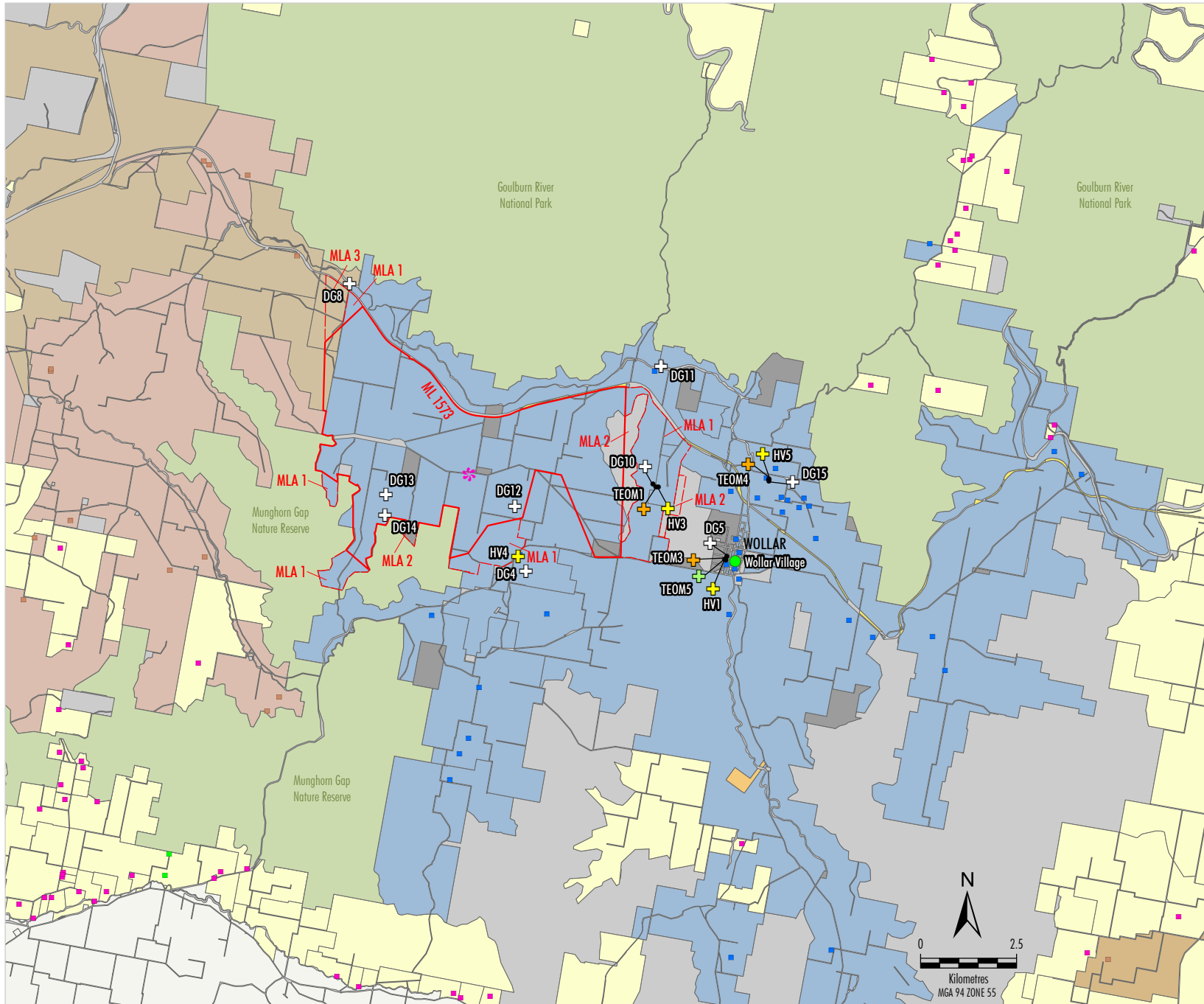


DRAFT



- LEGEND**
- Mining Lease Boundary
 - Mining Lease Application Boundary
 - Peabody Energy
 - Bylong Coal Project
 - Moolarben Coal Mine
 - Ulan Coal Mine
 - Crown Land (Special Lease/Licence)
 - Crown Land
 - TransGrid
 - Railway Land
 - Relevant Private Landholder
 - Other Land (Ownership not identified)
 - National Parks and Wildlife Service
 - Peabody Energy Dwelling
 - Ulan/Moolarben Dwelling
 - Private Dwelling
 - Community Building
 - Air Quality Monitoring Sites
 - Ambient Air Quality - Odour
 - + Static Dust Gauge
 - + High Volume Air Sampler
 - + Real-time PM_{2.5}
 - + Real-time PM₁₀
 - * Meteorological Station

Source: WCPL (2017); NSW Dept of Industry (2015); NSW Land & Property Information (2015)

Peabody
 WILPINJONG COAL MINE
 Air Quality Monitoring Locations