



**WILPINJONG COAL PTY LTD**

**Environment Protection Licence (EPL) 12425**

[Link to Environment Protection Licence EPL12425](#)

**LICENCE MONITORING DATA  
MONTHLY SUMMARY REPORT**

for

**1 July 2018 to 31 July 2018**

## Air Monitoring

Air quality surrounding the Wilpinjong Coal Mine is monitored using:

- tapered element oscillating microbalances (TEOM);
- high volume air samplers (HV); and
- dust deposition gauges (DG).

In terms of the above equipment:

1. the TEOM and HVAS measure fine dust particles up to 10 microns in diameter (i.e. PM10); and
2. the DG measure the total dust deposited in the gauge during the sample period.

All are influenced by mining as well as non mining activities in the local area.

The locations of the above monitoring equipment in relation to Wilpinjong Coal Mine are shown in Figures 5 and 7.

A summary of the monitoring results for the month is provided in Table 1 and the yearly trends are also shown in Figures 1 to 3.

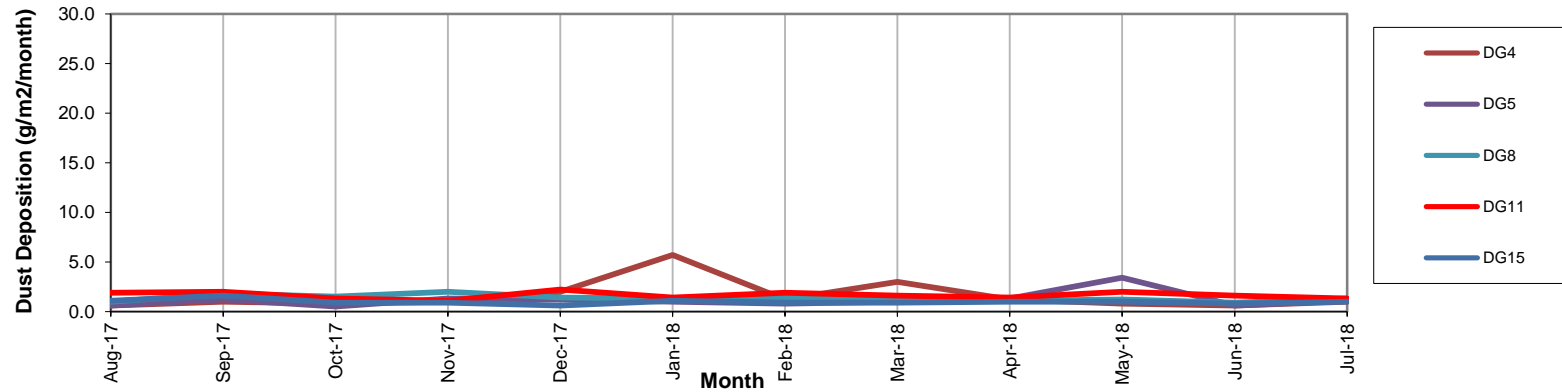
**Table 1**

EPL ID No.	Monitoring Point ID.	Pollutant	Unit of Measure	Monitoring Frequency required by EPL	No. of times measured during month	Min. Value	Max. Value	Mean Value	Measurement	Annual Average	Limit	Exceed <sup>n</sup> (yes/no)	Date Last Sampled	Date Reported
3	DG4	Particulates - TSM	grams per square metre per month	Monthly	1				1.0				31/07/18	07/08/18
4	DG5	Particulates - TSM	grams per square metre per month	Monthly	1				1.1	1.2	4.0	No	31/07/18	07/08/18
6	DG8	Particulates - TSM	grams per square metre per month	Monthly	1				1.3				31/07/18	07/08/18
9	DG11	Particulates - TSM	grams per square metre per month	Monthly	1				1.3				31/07/18	07/08/18
17	DG15	Particulates - TSM	grams per square metre per month	Monthly	1				1.0				31/07/18	07/08/18
13	HV1	PM10	micrograms per cubic metre	Every 6 days	5	10.5	59.5	23.4			50	No <sup>2</sup>	30/07/18	13/08/18
19	HV4	PM10	micrograms per cubic metre	Every 6 days	5	10.7	46.4	25.6			50		30/07/18	13/08/18
20	HV5	PM10	micrograms per cubic metre	Every 6 days	5	10.7	58.1	31.8			50		30/07/18	13/08/18
22	TEOM3	PM10	micrograms per cubic metre	Continuous (24 Hr Average)	100.0%	4.9	36.6	12.7			50	No		
23	TEOM4	PM10	micrograms per cubic metre	Continuous (24 Hr Average)	90.3%	3.4	42.3	16.1			50			

**Notes:**

1. Limits specified in the above table are from Project Approval SSD-6764.
2. Max value caused by regional dust event.

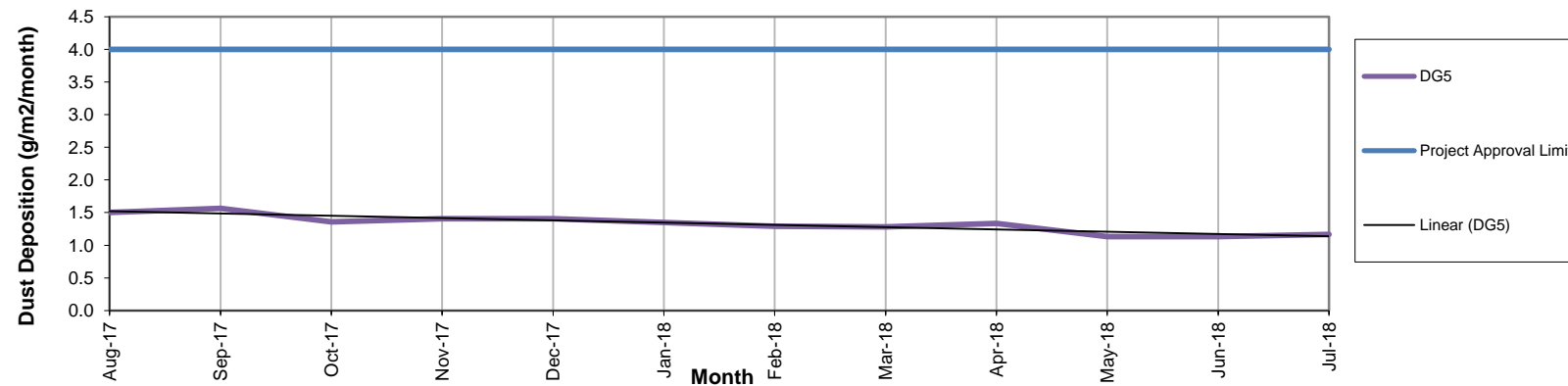
**Figure 1a. DG Results - 12 Month Trend**



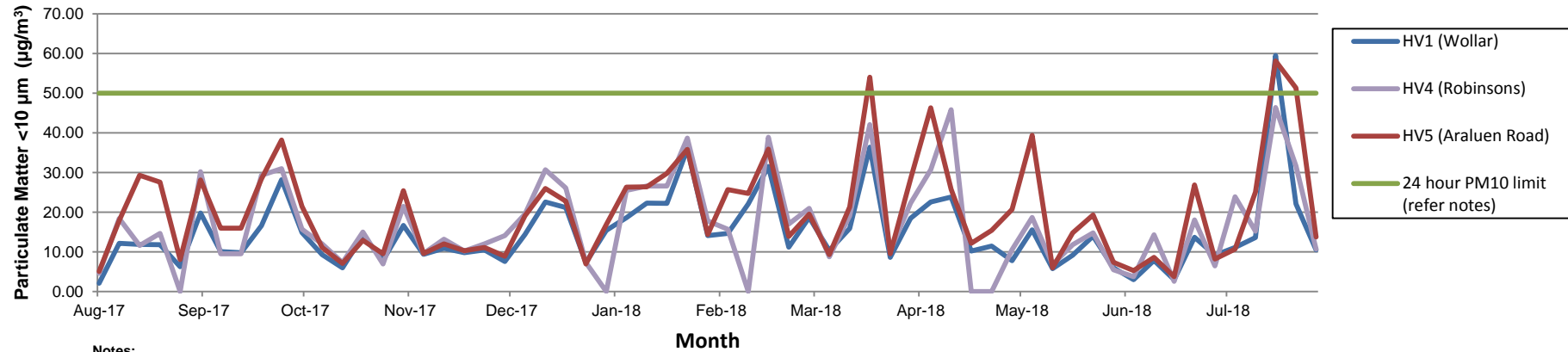
**Notes:**

1. Limit of 4 g/m<sup>2</sup>/month (annual average) applies to DG5 (Wollar Village) - refer Figure 1b.
2. DG4 result for Jan contained 75% organic matter (i.e. from bird droppings).

**Figure 1b. DG 5 Results - Annual Average**



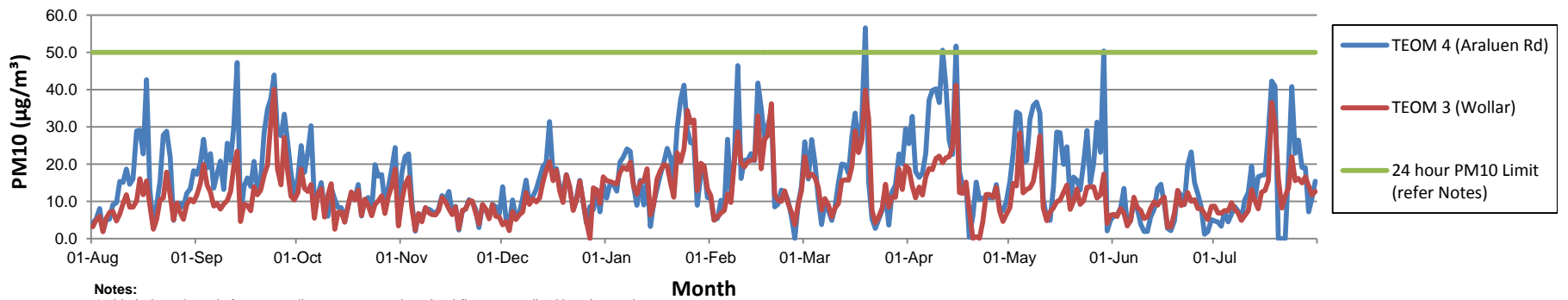
**Figure 2. HV (PM10) Results - 12 Month Trend**



**Notes:**

1. Limit doesn't apply for extraordinary events such as bushfires, prescribed burning, or dust storms.
2. A power outage prevented dust samples being collected from HV4 : on 28 August 2017, 1 January 2018, 12 February 2018, 19 & 25 April 2018 (power outage resulted in HV fault on 25 April 2018).
3. Recorded PM10 dust levels above 50 µg/m<sup>3</sup> in March and July caused by regional dust events - refer EPA PM10 dust graph on page 6 of this report.

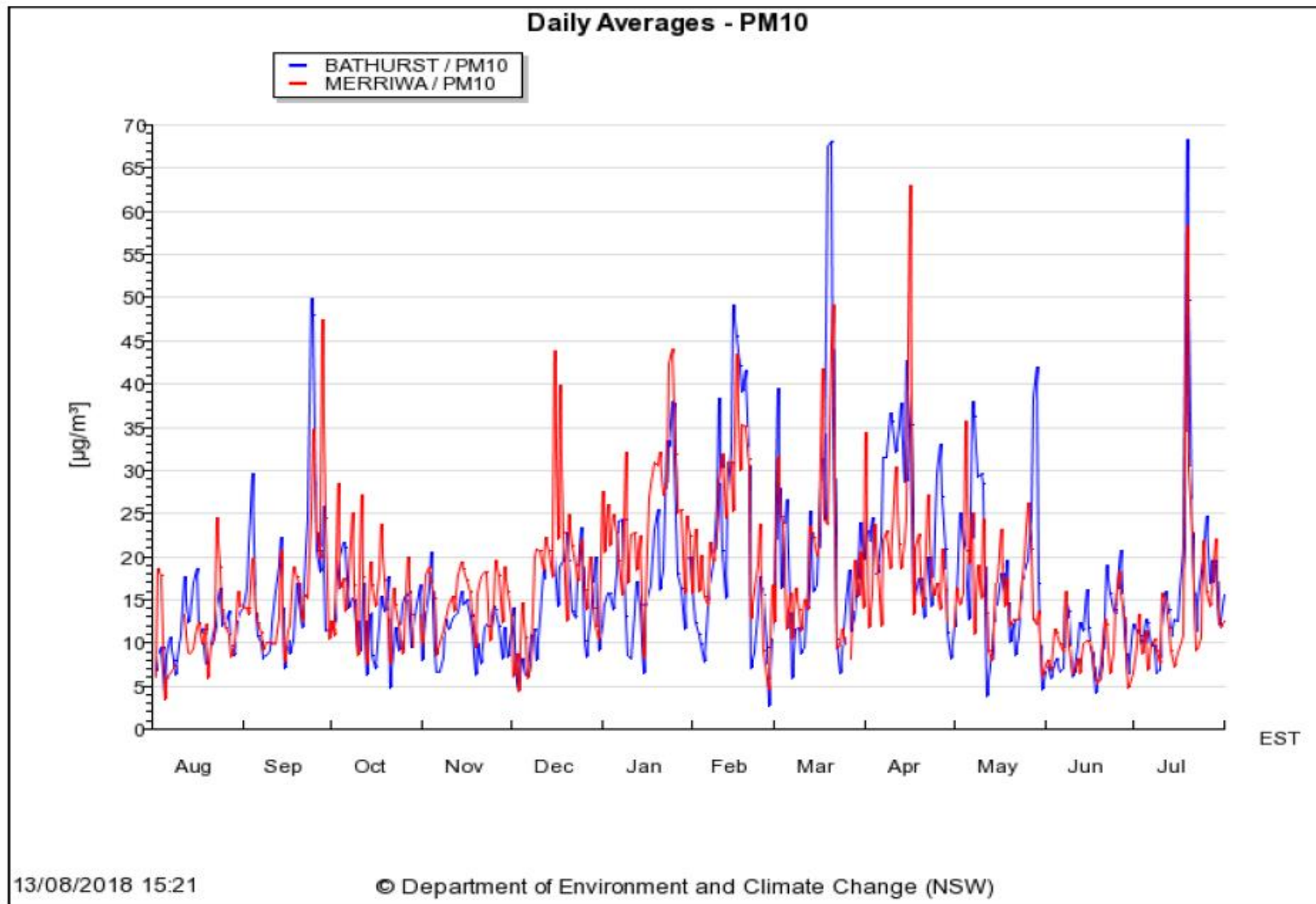
**Figure 3. TEOM (PM10) Results - 12 Month Trend**



**Notes:**

1. Limit doesn't apply for extraordinary events such as bushfires, prescribed burning or dust storms
2. TEOM 4 (Araluen Rd) influenced by dust from Araluen Road generally during stable atmospheric conditions (i.e. temperature inversions)
3. Elevated PM10 dust levels recorded in March, April, May and July 2018 due to regional dust events - refer EPA PM10 dust graph on page 6 of this report.
4. TEOM 4 offline from July 20 to July 23 due to instrument fault and repairs.

Shown below and for comparison with Figures 2 and 3 is the 24Hr Av. PM<sub>10</sub> dust levels recorded at Bathurst and Merriwa by NSW EPA from 1 August 2017 to 31 July 2018.



## Surface Water Monitoring

Surface water runoff is isolated and diverted around disturbed areas through the construction of water diversion bunds. Runoff from disturbed areas is diverted into on-site water retention dams.

A Reverse Osmosis (RO) Plant treats all water from the retention dams before it is discharged to Wilpinjong Creek. The EPL specifies limits for the quantity and quality of water that may be discharged from the site.

A summary of the water analysis results for the month is provided in Table 2.

**Table 2**

EPL ID No.	Monitoring Point ID.	Pollutant	Unit of Measure	Monitoring Frequency required by EPL	No. of times measured during month	Min. Value	Max. Value	Mean Value	Measurement	Limit	Exceed <sup>n</sup> (yes/no)	Date Last Sampled	Date Reported
24	RO Plant Discharge	Conductivity	microSiemens per centimetre (uS/cm)	Continuous during discharge	100%	0	449	301		500	No		
		Oil and Grease	milligrams per litre (mg/L)	Weekly during any discharge	9	<5	<5	<5		10.0	No	30/07/18	07/08/18
		pH	pH Unit	Continuous during discharge	100%	6.7	8.3	7.1		≥6.5≤8.5	No		
		Total Suspended Solids	milligrams per litre (mg/L)	Weekly during any discharge	9	<1	2	<1		50	No	30/07/18	07/08/18
		Volume discharged	megalitres per day	Continuous during discharge	100%	0.347	1.653	0.886		15.0	No		

## Noise Monitoring

Environmental noise monitoring (“monitoring”) is carried out on a monthly basis.

The purpose of the monitoring is to assess whether mining operations are consistent with the objectives of the EPL and the development consent conditions.

In terms of this monitoring, it is undertaken:

- by an independent noise consultant;
- during the night-time; and
- at the sites shown in Figures 6 and 7.

On pages 9 and 10 of this report are the noise levels and findings from the consultant’s environmental noise monitoring report (**noise monitoring report**).



Table 4.2:  $L_{Aeq,15minute}$  GENERATED BY WCP AGAINST PROJECT SPECIFIC CRITERIA – JULY 2018

Location	Start Date and Time	Wind Speed m/s <sup>1,2</sup>	Stability Class <sup>1,2</sup>	Criterion dB	Criterion Applies? <sup>2,3</sup>	WCP $L_{Aeq,15min}$ dB <sup>4,5</sup>	Exceedance <sup>5,6</sup>
N6	12/07/2018 01:10	0.6	F	37	Yes	<20	Nil
N13	12/07/2018 00:40	0.0	G	36	No	<25	NA
N14	12/07/2018 00:19	0.5	G	35	No	<20	NA
N15	11/07/2018 23:03	0.5	G	35	No	IA	NA
N17	11/07/2018 22:29	0.0	G	35	No	IA	NA
N19	11/07/2018 22:00	0.3	G	35	No	IA	NA
N20	11/07/2018 23:37	0.0	G	35	No	IA	NA
N21	12/07/2018 00:47	0.0	G	35	No	<25	NA

Notes:

1. Wind speed is sourced from the WCP weather station, stability class is determined based on WCP inversion tower data;
2. Criterion may or may not apply due to rounding of meteorological data values;
3. Noise emission limits apply for all meteorological conditions, except for the following: wind speeds greater than 3 m/s above ground level; or stability category F temperature inversions and wind speeds greater than 2 m/s at 10m above ground level; or stability category G temperature inversion conditions;
4. These are results for WCP in the absence of all other noise sources;
5. Bold results in red are those greater than the relevant criterion (if applicable); and
6. NA in exceedance column means atmospheric conditions have determined that criterion is not applicable.

Table 4.3:  $L_{A1,1minute}$  GENERATED BY WCP AGAINST PROJECT SPECIFIC CRITERIA – JULY 2018

Location	Start Date and Time	Wind Speed m/s <sup>1,2</sup>	Stability Class <sup>1,2</sup>	Criterion dB	Criterion Applies? <sup>2,3</sup>	WCP $L_{A1,1min}$ dB <sup>4,5</sup>	Exceedance <sup>5,6</sup>
N6	12/07/2018 01:10	0.6	F	45	Yes	<20	Nil
N13	12/07/2018 00:40	0.0	G	45	No	27	NA
N14	12/07/2018 00:19	0.5	G	45	No	<25	NA
N15	11/07/2018 23:03	0.5	G	45	No	IA	NA
N17	11/07/2018 22:29	0.0	G	45	No	IA	NA
N19	11/07/2018 22:00	0.3	G	45	No	IA	NA
N20	11/07/2018 23:37	0.0	G	45	No	IA	NA
N21	12/07/2018 00:47	0.0	G	45	No	<25	NA

Notes:

1. Wind speed is sourced from the WCP weather station, stability class is determined based on WCP inversion tower data;
2. Criterion may or may not apply due to rounding of meteorological data values;
3. Noise emission limits apply for all meteorological conditions, except for the following: wind speeds greater than 3 m/s above ground level; or stability category F temperature inversions and wind speeds greater than 2 m/s at 10m above ground level; or stability category G temperature inversion conditions;
4. These are results for WCP in the absence of all other noise sources;
5. Bold results in red are those greater than the relevant criterion (if applicable); and
6. NA in exceedance column means atmospheric conditions have determined that criterion is not applicable.

## *6 SUMMARY OF COMPLIANCE*

Global Acoustics was engaged by Wilpinjong Coal Pty Ltd to conduct a noise survey around Wilpinjong Coal Project (WCP), an open cut coal mine located approximately 40 kilometres north east of Mudgee.

Environmental noise monitoring described in this report was undertaken during the night period of 11/12 July 2018. Attended noise monitoring was conducted at eight sites. The duration of all measurements was 15 minutes.

Noise levels from WCP complied with relevant noise limits at all monitoring locations during the July 2018 monitoring. Criteria may not always be applicable due to meteorological conditions at the time of monitoring.

Wilpinjong Coal received the noise monitoring report from Global Acoustics Pty Ltd on 3 August 2018.

## Blasting

Monitoring is carried out near sensitive locations during blasting activities to determine the vibration in the air (overpressure) and earth (ground vibration). A summary of the results of this monitoring, and the limits specified in the EPL, are shown in Tables 3 and 4. Figure 4 shows the actual overpressure and vibration levels recorded during the month.

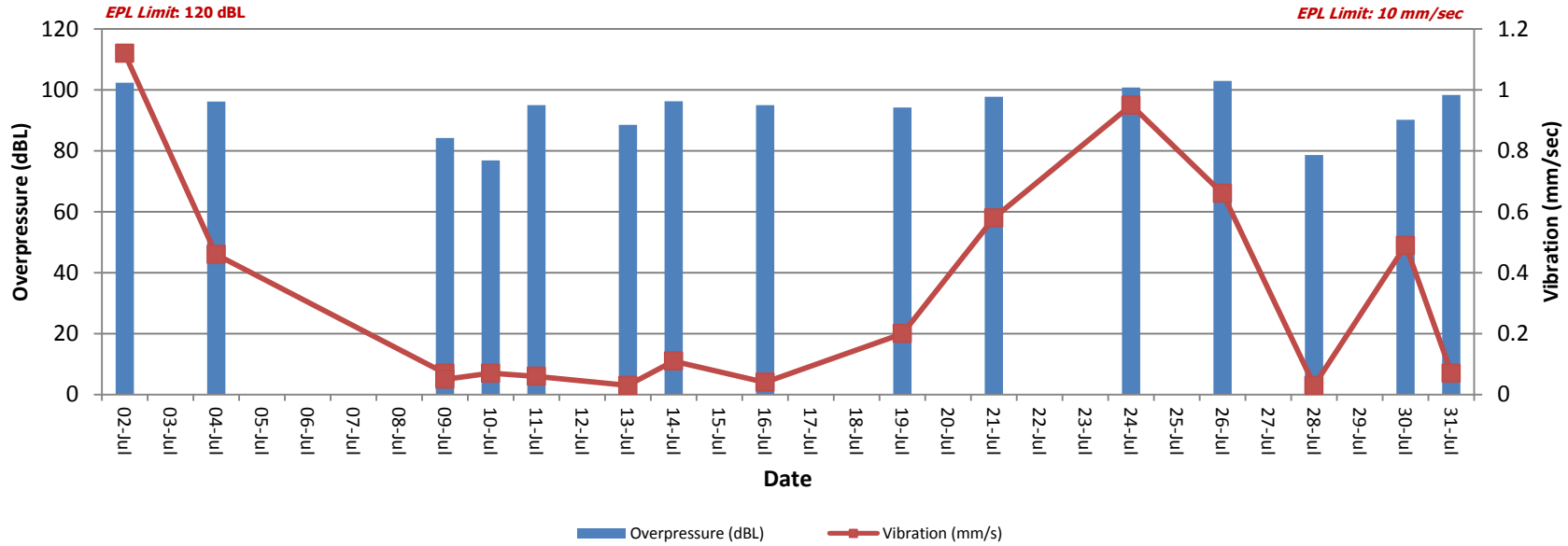
**Table 3 – Overpressure Monitoring Results**

Location	Month	Number of Blasts	Minimum overpressure (dB(L))	Maximum overpressure (dB(L))	Mean overpressure (dB(L))	EPL overpressure Limits (dB(L))	Exceedance (yes/no)
Approx. 50m west of the Wollar Public School	July	16	76.9	103.0	92.2	115dB (95% blasts) 120 dB (100% blasts)	no

**Table 4 – Vibration Monitoring Results**

Location	Month	Number of Blasts	Minimum vibration (mm/sec)	Maximum vibration (mm/sec)	Mean vibration (mm/sec)	EPL vibration Limits (mm/sec)	Exceedance (yes/no)
Approx. 50m west of the Wollar Public School	July	16	0.03	1.12	0.31	5 mm/s (95% blasts) 10 mm/s (100% blasts)	no

Figure 4. Overpressure (dBL) and Vibration (mm/sec) recorded during Month



## Weather Monitoring

Continuous weather monitoring occurs onsite at the location shown on Figures 5 and 6 (**Meteorological Station**). The Meteorological Station continuously monitors for: rainfall; relative humidity; temperature (i.e. at 2m, 10m & 60m), barometric pressure, wind speed, wind direction and temperature lapse rate.

The temperature lapse rate is a measure of stable atmospheric conditions and is determined by measuring air temperature at two elevations 58m apart (i.e. 2m and 60m from ground level) and extrapolating the temperature difference over 58m to determine the lapse rate per °C/100m.

Table 5 shows the meteorological data recorded during the month.

**Table 5**

Date	Temperature (°C)									Humidity (%)			Prevailing Wind			Rain	Bar	Lapse Rate	
	2m			10m			60m			Speed			Dir	(mm)	(hPa)	(°C/100m)			
	Avg	Min	Max	Avg	Min	Max	Avg	Min	Max	Avg	Min	Max	Avg	Min	Max	(Deg)		Max	
1/07/2018	5.1	-2	14.2	5.7	-1.3	13.8	7.5	-0.1	13.2	80.8	42.4	99.3	0.6	0	3.5	64	0	1030.2	11.6
2/07/2018	10.8	5.6	13.2	11.1	6.7	13.1	11.3	9.5	12.6	78.6	64.9	94.6	3.1	0	5.2	86	0	1029.4	6.7
3/07/2018	8.3	2.3	15.3	8.8	2.4	14.9	10.3	4.7	14.2	85.6	60.3	100	0.9	0	4.1	65	0	1028.8	8.8
4/07/2018	10.8	5.2	18.3	11.1	5.7	17.8	12.1	8.4	17.1	84	55.4	98.4	0.6	0	2.5	53	0	1026.9	6.9
5/07/2018	11.9	4.1	23.7	12.4	4.5	22.8	14.4	6.7	22.1	81.9	43.7	100	0.8	0	4.7	302	0	1021.3	12.4
6/07/2018	13.4	6	21.9	14.2	7.5	21.5	15.5	9.4	20.6	73.8	46.8	99.5	2.7	0	10.3	269	0.2	1014.4	12.9
7/07/2018	7.1	2	12.4	7.5	3.4	11.9	8.1	6.2	11.2	76.1	46.7	97.4	3.6	0	8.6	266	0.8	1015.6	9.3
8/07/2018	7.9	3.3	10.5	8	3.6	10.6	7.7	3.8	10.3	72.5	63.7	87.6	3.9	2.4	5.7	269	0.2	1021.2	1.4
9/07/2018	9.2	1.7	15.8	9.6	3	14.9	10.1	6.6	14.1	68.3	39	95.6	1.2	0	4.2	257	0	1024.2	9.8
10/07/2018	5.8	-2	15.2	6.4	-1.2	14.7	7.5	0.6	14	78.7	46.4	98.7	0.7	0	3.6	62	0	1027	8.8
11/07/2018	6.2	-1.4	16.5	6.8	-0.6	15.9	7.9	1.5	15.3	75.1	33.2	99.2	0.7	0	4.3	273	0	1071	7.9
12/07/2018	6.5	-2.1	14.6	6.8	-1.3	13.9	7.5	0.6	13.1	65.7	33.6	97.7	1.5	0	5.1	259	0	1020.4	7.1
13/07/2018	6.3	0.1	12.4	6.7	0.9	12	7.3	3.4	11.2	67.5	45.9	92	2.1	0.1	4.4	246	0	1019.8	7.4
14/07/2018	4.5	-3.5	14.4	5.1	-2.9	14	6.4	-0.8	13.4	69.5	26.7	98	0.6	0	3.5	265	0	1020	9.1
15/07/2018	3.4	-5.9	14.2	4	-4.8	13.7	5.3	-2.9	12.9	62.7	18.2	95.8	1.2	0	4.8	275	0	1017.8	9.8
16/07/2018	3.8	-5.4	14.1	4.3	-4.5	13.8	5.9	-2	13.3	60.2	19.2	94.2	1.3	0	5.2	262	0	1016.5	9.8
17/07/2018	8	-2.6	19	8.8	-1.3	18.5	11.2	2	17.8	47	18.1	85.6	2.5	0	7.8	284	0	1017.5	15.3
18/07/2018	10.9	2.3	18.2	11.5	3.6	17.7	12.7	6.9	17.1	44.9	27.5	82.2	1.9	0	6.4	269	0	1018.8	11.2
19/07/2018	8.2	-1.8	20.6	8.9	-0.6	20.1	10.5	1.8	19.3	60.8	22.3	95.2	1.6	0	7.3	280	0	1017.2	10.9
20/07/2018	6.8	0.4	14.3	7.1	1.6	14.3	8.6	4.9	14.1	62.5	30	83.9	3	0	8.8	257	0	1014	17.6
21/07/2018	7.1	1.6	14.6	7.4	2.3	13.7	8.1	4	13	60.9	34.7	82.4	1.6	0	3.7	265	0	1022.9	9.0
22/07/2018	4.7	-3.6	15.1	5.3	-2.7	14.7	6.4	-1	14.2	65.3	26.2	95.4	0.1	0	2.1	2	0	1023.4	8.8
23/07/2018	5.6	-4.7	16.8	6.2	-3.5	16.2	7.6	-1.8	15.5	56.1	19.6	90.9	0.9	0	4.5	279	0	1019.3	10.2
24/07/2018	10.5	0.6	20	11	2.1	19.6	12.4	5.2	18.8	46.2	21.7	76.5	2	0	6.7	264	0	1047	11.4
25/07/2018	9.4	-0.1	19.4	10.3	1.3	18.9	12.4	6	18.1	56.9	28.2	83.5	1.1	0	5.2	260	0	1018.3	13.4
26/07/2018	8.9	-0.6	18.6	9.4	0.5	17.9	10.5	2.7	17.3	63.3	32.5	94.6	0.8	0	5.8	261	0	1019.2	8.6
27/07/2018	10	0.8	20	10.5	2	19.4	11.6	4.2	18.8	59.5	26.1	93.5	0.3	0	3.6	265	0	1016.9	8.3
28/07/2018	12	5.6	21	12.3	6.2	20.4	12.9	7.7	19.9	63	33	91.5	0.1	0	3.5	212	0.4	1015.7	6.0
29/07/2018	14	10.1	20.3	14.2	10.7	19.8	14.5	10.5	18.9	68.1	38.4	98.5	2.5	0	8.7	258	5.2	1011.4	6.0
30/07/2018	8.9	3.1	14	9.1	4	13.5	9.4	5.7	12.7	58	39.3	82.1	2.8	0.4	6.8	263	0	1018.9	6.7
31/07/2018	8.1	-1.1	16.6	8.7	0.2	16.3	9.7	3.6	15.4	63.1	31.6	97	2.1	0	7.1	270	0	1019.6	10.0

Figure 5 – Air (Dust) Monitoring Locations

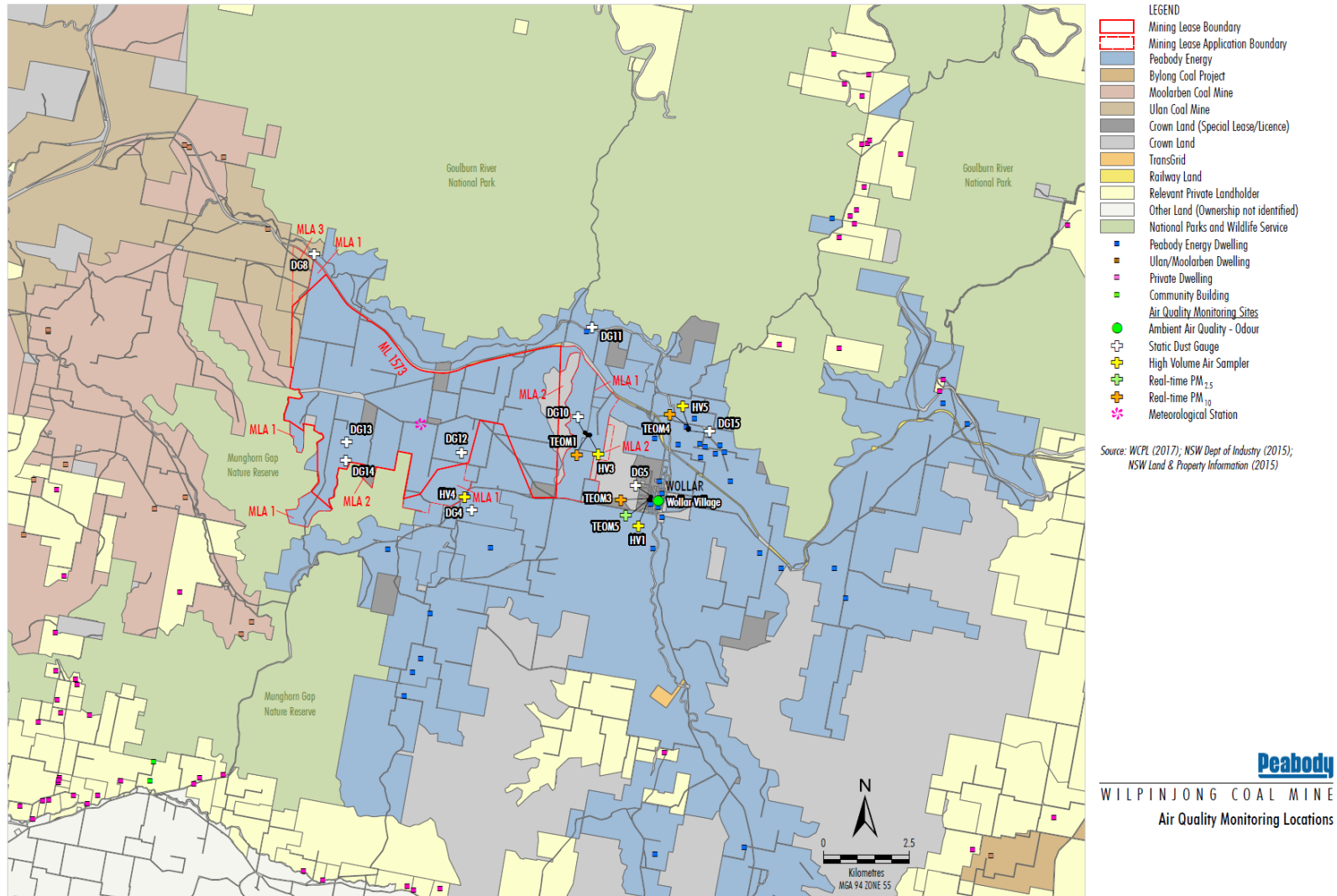


Figure 6 – Attended Noise Monitoring Locations

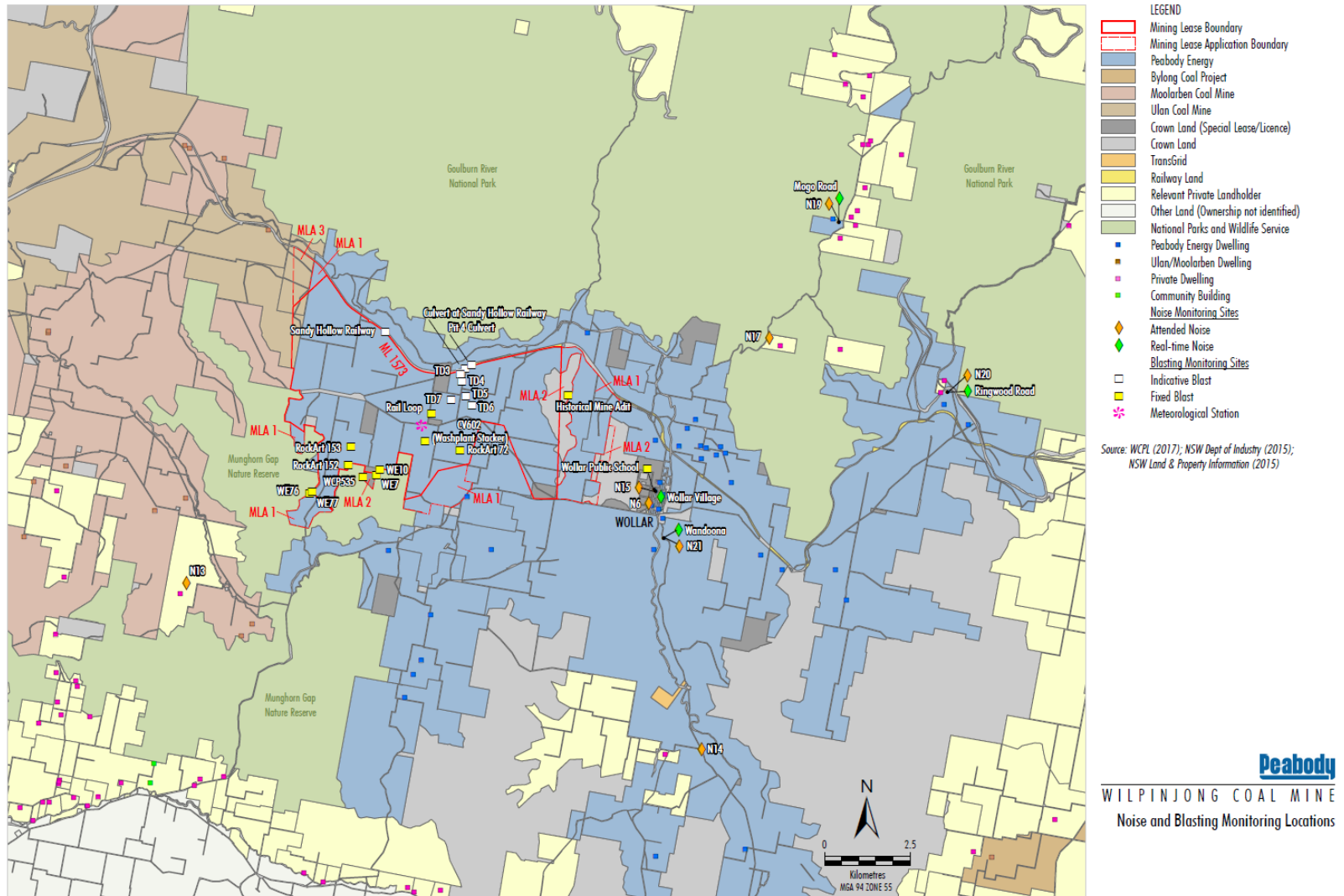




Figure 7 – Wollar Village Environmental Monitoring Sites



**LEGEND**

- Peabody Energy
- Crown Land (Special Lease/Licence)
- Crown Land
- Railway Land
- Relevant Private Landholder
- 1 Landholder Reference Number
- Peabody Energy Dwelling
- Community Building
- Private Dwelling
- # Special Lease/Licence Holder

**Noise Monitoring Sites**

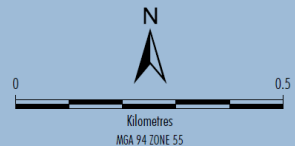
- Attended Noise
- Real-time Noise

**Blasting Monitoring Sites**

- Fixed Blast

**Air Quality Monitoring Sites**

- Ambient Air Quality - Odour
- Static Dust Gauge
- High Volume Air Sampler
- Real-time PM<sub>2.5</sub>
- Real-time PM<sub>10</sub>



Source: WCPL (2017); NSW Dept of Industry (2015); NSW Land & Property Information (2016)

**Peabody**  
 WILPINJONG COAL MINE  
 Wollar Environmental Monitoring Sites